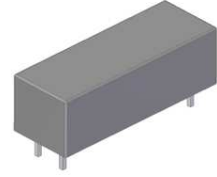


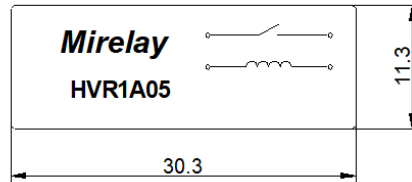
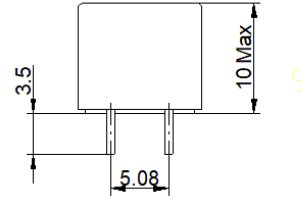
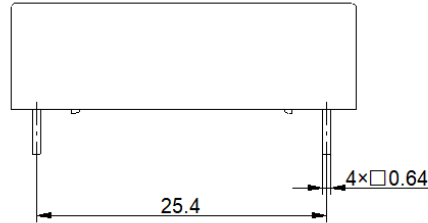
# HVR1A05

- High Voltage Reed Relay
- Low Contact Resistance
- Breakdown up to 4KV
- Excellent Lifetime Characteristics
- Custom Design Available



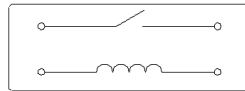
## [Outline Dimension]

Unit: mm Scale: 1/1



## [Pin Layout]

## [Top View]



## Order Information

**HVR1A05**

Coil Parameters		Relay Parameters	
1 Nominal coil voltage	5 VDC	1 Min Breakdown Voltage	4K VDC
2 Max Operating voltage	7 VDC	2 Dielectric Strength coil/contact	4K VDC
3 Max Pull-in voltage	4 VDC	3 Insulation Resistance coil/contact	1.00E+12ohm
4 Min Drop-out voltage	0.5 VDC	4 Operate Time, incl. Bounce	1.0ms
5 Coil Resistance	100 ohm	5 Reset Time	0.1ms
Contact Parameters		6 Capacitance Across Contacts	0.4pF
1 Contact Form	1 Form A	7 Storage Temperature	-35~+105°C
2 Max Contact Rating	100 W	8 Operating Temperature	-20~+70°C
3 Max Switch Voltage	1KV ACpeak/DC	9 Soldering Temperature	5 sec. max 260°C
4 Max Switch Current	1.0 A		
5 Max Carrying Current	2.5 A		
6 Min Breakdown Voltage	4K VDC		
7 Max Contact Resistance	150 mohm		

Version: 01	Designed by		TITLE	
	Checked by		High Voltage Reed Relay	
	Approved by		P/N	Scale: 1:1
	Date	27th,Dec,2021	HVR1A05	Page: 1/1