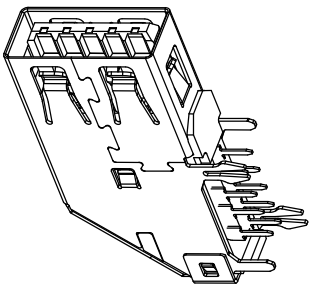
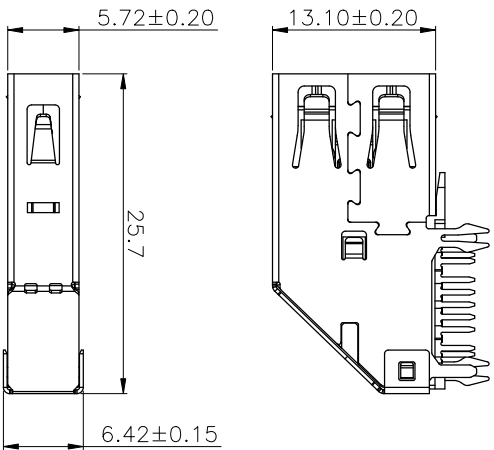
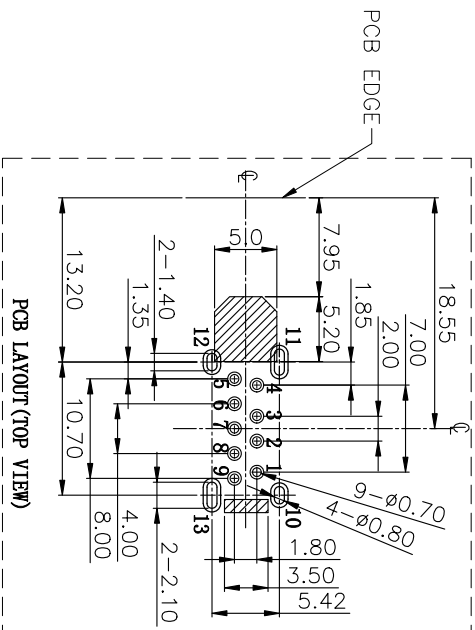


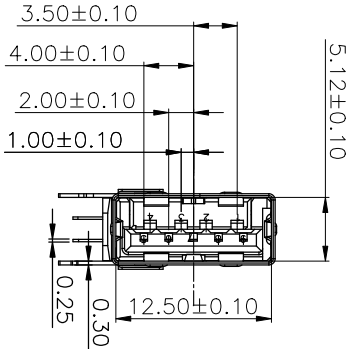
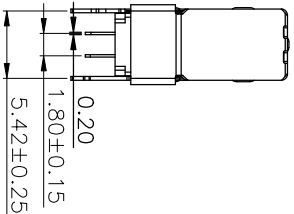
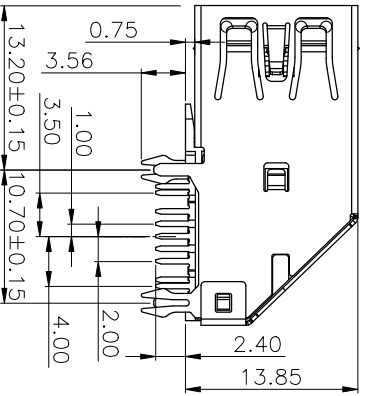
RoHS



3D VIEW



PCB LAYOUT (TOP VIEW)



SPECIFICATIONS:
 Contact current Rating:
 1.8 Amperes for pin1&pin4.
 0.25 Amperes other contacts
 Dielectric Withstanding Voltage:AC 100V/(RMS)
 Insulation resistance:100Mmegohms Minimum.
 Contact Resistance:
 30mΩMax for pin1&pin4
 50mΩMax for other contacts
Mechanical Characteristics:
 Mating Force:35 Newtons.Maximum
 Umating Force:10 Newtons.Minimum.
 8N Min After Durability

MATERIAL:
 Housing: PBT
 Contact: copper alloy (T=0.25mm)
 Shell: SUS

PLATING:
 Contact: Au Plated on contact area
 Tin Plated on solder area
 Nickel underplating over all
 Nickel Plated
 operating Temperature:-55to+85°

Pin Number	Signal Name	Pin Number	Signal Name
1	VBUS	5	SSRX-
2	D-	6	SSRX+
3	D+	7	GND
4	GND	8	SSTX-
	Shield	9	SSTX+

公差一览表
 TOLERANCE UNLESS OTHERWISE SPECIFIED

公差	范围	公差	范围	公差	范围
X.	±0.35	X.	±5.°		
.X	±0.25	X.	±2.°		
.XX	±0.20	.XX	±1.°		
.XXX	±0.05	.XXX	±0.5°		

深圳市精拓金电子有限公司
 Shenzhen Jing Tuo Jin Electronics Co., Ltd.

单位	MM	制图	制图料号
UNITS	MM	DRAWING	906-966A2050CD10200
比例	1:1	审核	郭治富
SCALE	1:1	核准	黄国荣
日期	2021-03-10	DATE	
角法		版本	A0

您正在使用 ZWCAD 2022 个人版, 不得用于商业用途, 详情请咨询 4007782-588.