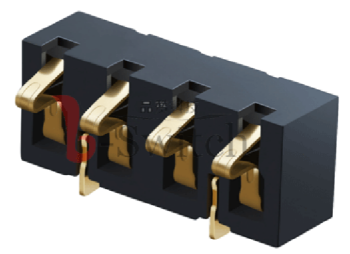


RECOMMENDED PCB LAYOUT
TOLERANCE:±0.05



GT-BT P 300 04 - XXXX B - 015A

G-Switch
Series
 BT: Battery
Type
 P: Plug
Pitch
 300=3.00
Pin Q' PY
 02~08Pin
Serial code
Detail
 B:No olumn
Height
 0460=4.60
 0500=5.00
 0650=6.50
 0720=7.20

G-Switch Specification:

- 1.Current rating: 3A
- 2.Rated Voltage: 12V DC
- 3.Insulation resistance: 500MΩ min
- 4.Contact resistance: 30mΩ max
- 5.Dielectric strength: 500V RMS
- 6.Durability: 10,000cycles
- 7.Operating temperature range: -40°C ~ +85°C

3	FIXED FEET	COPPER ALLOY	Tin OVERALL
2	CONTACT	PHOSPHOR BRONZE	Au ON CONTACT AREA
1	HOUSING	LCP,94V-0	BLACK
NO.	PART NAME	MATERIAL	REMARK

Ordering Information:

Circuit	Dimensions(mm)				Circuit	Dimensions(mm)			
	A	B	C	D		A	B	C	D
02P	4.6	2.9	6.0	-	06P	4.6	2.9	18.0	12.0
	5.0	3.3							
	6.5	4.8							
	7.2	5.5							
04P	4.6	2.9	12.0	6.0	07P	4.6	2.9	21.0	15.0
	5.0	3.3							
	6.5	4.8							
	7.2	5.5							
05P	4.6	2.9	15.0	9.0	08P	4.6	2.9	24.0	18.0
	5.0	3.3							
	6.5	4.8							
	7.2	5.5							

SCALE: 1:1 UNIT: mm
 SIZE: A4

Unless otherwise
 General Tolerance:
 X ±0.35
 X.x ±0.25
 X.xx ±0.15
 X.xxx ±0.05
 X* ±3°

Title: Horizontal Pitch3.0 Battery Conn
 SMT C×3.5×H(A)mm

Molde Code: GT-BTP300XX-XXXXB-015A

DRAWN	CHECKED	APPROVED	DATE
Xia	Chen	Chen	2023.12.28



REV: A0 SHEET: 1/1

