	EXCEL CELL ELECTRONIC CO., LTD.	NO.	A30877		
SPECIFICATION		Edition	6	Page	1

## EDG/S SERIES DIP SWITCH

### 1. FEATURES:

- 1-1 Tactile response is performed directly by larger contact pressure to ensure very stable contact
- 1-2 UL 94V-0 grade fire retardant engineering plastic
- 1-3 Bottom epoxy sealed standard to ensure free of flux immersion during wave soldering
- 1-4 Contact wiping on make and break
- 1-5 Gold plated and Tin plated contact to ensure low contact resistance and long mechanical life
- 1-6 Ideal for data processing, communications, remote controls and burglar alarm system use, where manual programming is required
- 1-7 RoHS Compliant

### 2. SPECIFICATIONS

#### 2-1 ELECTRICAL


- |   |                             |
|---|-----------------------------|
| 2-1-1 Contact rating                        |                             |
| switching                                   | 25 mA, 24 VDC               |
| non-Switching                               | 100 mA                      |
| 2-1-2 Contact resistance                    |                             |
| Initial                                     | 50 mΩ Max.                  |
| after life test                             | 100 mΩ Max.                 |
| 2-1-3 Insulation resistance                 | 1,000 MΩ Min. at 100 VDC    |
| 2-1-4 Dielectric strength                   | 500 VDC Min. for 60 seconds |
| 2-1-5 Capacitance between adjacent switches | 5 pF Max.                   |

#### 2-2 MECHANICAL AND ENVIRONMENTAL

- |                                    |  |
|------------------------------------|--|
| 2-2-1 Temperature rating           |  |
| operating                          | -40°C to + 85°C                                      |
| storage                            | -40°C to + 85°C                                      |
| 2-2-2 Operation force              | 800g Max. (SPST only)                                |
| 2-2-3 Mechanical life              | 2,000 operations                                     |
| 2-2-4 Humidity                     | 95% RH, 40°C for 96 Hrs.                             |
| 2-2-5 Vibration                    | 10Hz-55Hz-10Hz for 6 Hrs.                            |
| 2-2-6 Solderability                | After flux 230±5°C for<br>5±0.5 seconds 95% coverage |
| 2-2-7 Resistance to soldering heat | 260±5°C for 5±1 seconds                              |

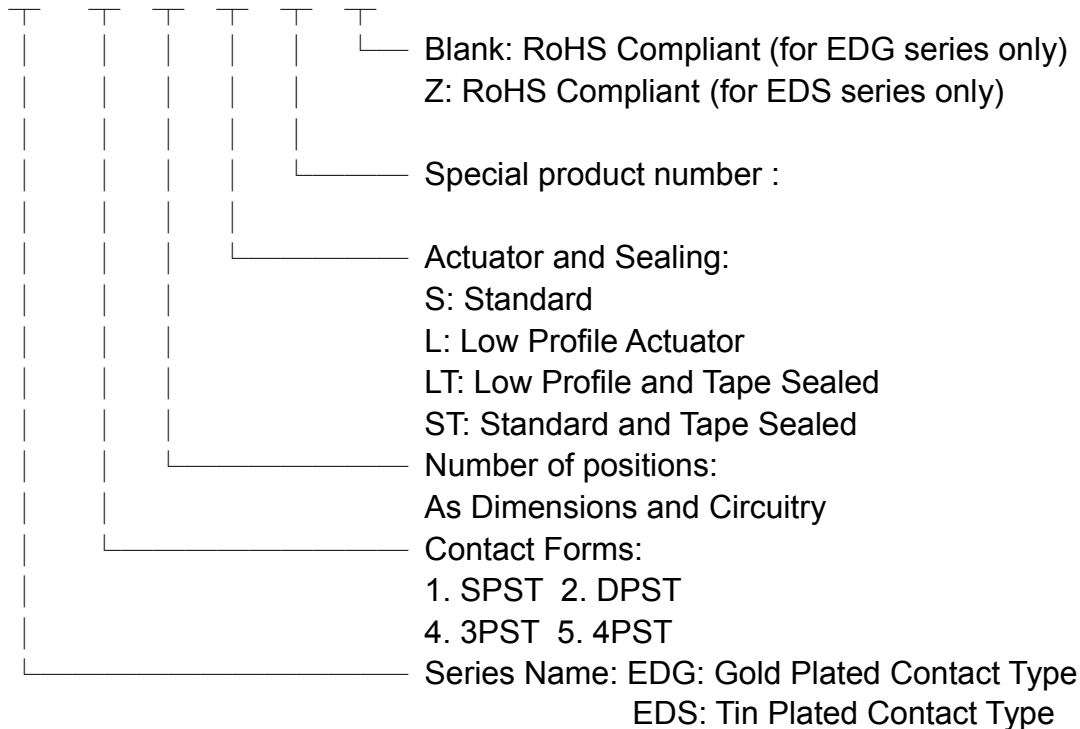
### 3. OPTIONS:

- 3-1 Special top or side marking available
- 3-2 Low profile actuator
- 3-3 Low profile actuator plus top tape sealed

	EXCEL CELL ELECTRONIC CO., LTD.	NO.	A30877		
SPECIFICATION		Edition	6	Page	2

#### 4. PART NUMBERING SYSTEM:

EDG 1 01 S 61



#### 5. PACKING:

##### 5.1 PACKING METHOD

All switches are packed into IC tubes as an inner packing unit, then ten tubes are bundles together with rubber bands.

Length of IC tube: 560 mm (EDG/S 1 pole only: 280 mm)

##### 5.2 INFORMATION ON LABEL (stuck to each bundle of IC tubes)

- |                 |                        |
|-----------------|------------------------|
| (1) DESCRIPTION | (6) WARNING            |
| (2) LOT NO.     | (7) QC STAMP           |
| (3) QUANTITY    | (8) DATE               |
| (4) TESTER NO.  | (9) MANUFACTURERS NAME |
| (5) ECE MARK    |                        |

#### 6. DRAWINGS:

Dip switch dimensions: see attached drawing

Circuit diagram: see attached drawing

P.C.B. layout diagram: see attached drawing

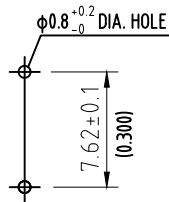
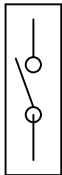
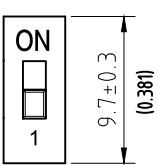
#### 7. WARNING:

Please keep contacts in OFF position during wave soldering.

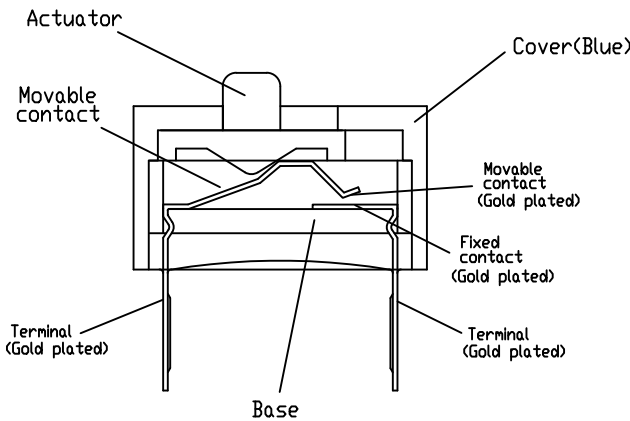
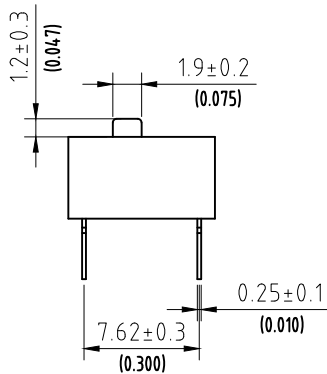
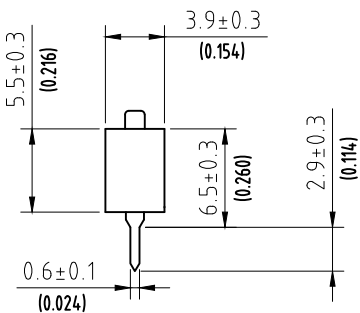
EDG101S61 SPST 1POLE DIMENSIONS


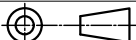
Unit:mm(inch)

P.C.B LAY OUT



CONSTRUCTION



				NORMAL TOLERANCE		 EXCEL CELL ELECTRONIC CO., LTD.						PART NUMBER		EDG101S61	
				RANGE	TOLERANCE							UNIT		MM ( INCH )	PART NAME
				0-1	±0.1	CHECK	Gary (2023.08.31)	DESIGN	Marcus	DRAWN	Ray (2023.08.31)	SCALE	2 : 1	TYPE	SPST-A
				1-4	±0.3							SIZE	A4	FILE NAME	7041011161A.dwg
				4-16	±0.5							PROJECTION		EDITION	A
				16-63	±0.8										
				63-250	±1.0										
				X.	±5°										
NO.	DETAILS	ALTERED BY	DATE	X.X	±2.5°										