

A

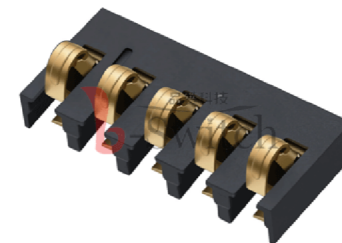
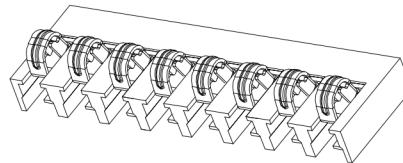
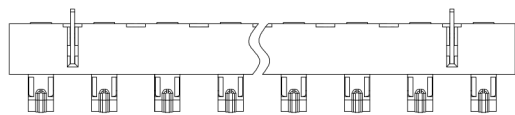
B

C

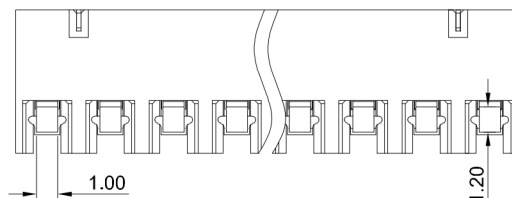
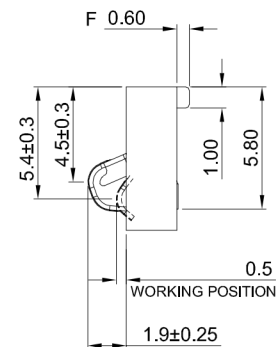
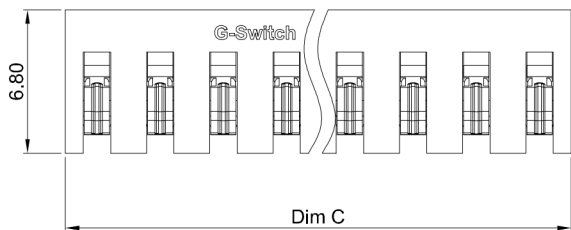
D

E

1



2



GT-BT P 300 XX- XXXX B - 019 A

G-Switch

Series
BT: Battery

Type
P: Plug

Pitch
300=3.00

Pin Q' PY
02~8Pin

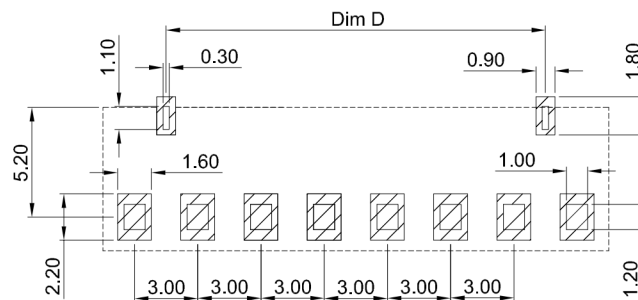
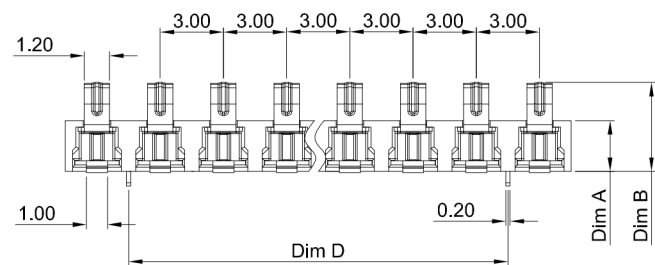
Height
0240=2.4
0350=3.5

Detail
F:DIP

Serial code

Detail
B:No column

3



G-Switch Specification:

- 1.Current rating: 3A
- 2.Rated Voltage: 12V DC
- 3.Insulation resistance: 500MΩ min
- 4.Contact resistance: 30mΩ max
- 5.Dielectric strength: 500V RMS
- 6.Durability: 10,000cycles
- 7.Operating temperature range: -40°C ~ +85°C

3	FIXED FEET	COPPER ALLOY	Tin OVERALL
2	CONTACT	PHOSPHOR BRONZE	Au ON CONTACT AREA
1	HOUSING	LCP,94V-0	BLACK
NO.	PART NAME	MATERIAL	REMARK

RECOMMENDED PCB LAYOUT
TOLERANCE:±0.05

Ordering Information:

Circuit	Dimensions(mm)				Circuit	Dimensions(mm)			
	A	B	C	D		A	B	C	D
02P	2.4	4.3	6.00	-	06P	2.4	4.3	18.00	12.00
	3.5	5.4				3.5	5.4		
03P	2.4	4.3	9.00	3.00	07P	2.4	4.3	21.00	15.00
	3.5	5.4				3.5	5.4		
04P	2.4	4.3	12.00	6.00	08P	2.4	4.3	24.00	18.00
	3.5	5.4				3.5	5.4		
05P	2.4	4.3	15.00	9.00					
	3.5	5.4							

SCALE: 1:1 UNIT: mm
SIZE: A4

Unless otherwise
General Tolerance:

X	±0.35
X.x	±0.25
X.xx	±0.15
X.xxx	±0.05
X*	±3°

Title: Vertical Pitch3.0 Battery Conn
SMT C×6.8×H(A)mm

Molde Code: GT-BTP300XX-XXXXB-019A

DRAWN	CHECKED	APPROVED	DATE
Xia	Chen	Chen	2023.12.28



REV: A0 SHEET: 1/1

A

B

C

D

E

5

5