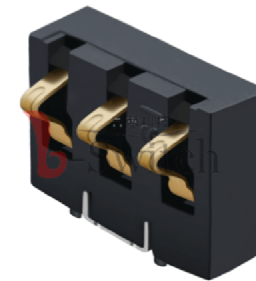


RECOMMENDED PCB LAYOUT
TOLERANCE:±0.05



GT-BT P 300 03 - XXXX A - 016 A

G-Switch

Series
BT: Battery

Type
P: Plug

Pitch
300=3.00

Pin Q' PY
03=3Pin

Serial code

Detail
A:With column

Height
0460=4.60
0500=5.00
0540=5.40
0600=6.00
0680=6.80
0720=7.20

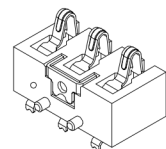
G-Switch Specification:

- 1.Current rating: 3A
- 2.Rated Voltage: 12V DC
- 3.Insulation resistance: 500MΩ min
- 4.Contact resistance: 30mΩ max
- 5.Dielectric strength: 500V RMS
- 6.Durability: 10,000cycles
- 7.Operating temperature range: -40°C ~ +85°C

NO.	PART NAME	MATERIAL	REMARK
3	FIXED FEET	COPPER ALLOY	Tin OVERALL
2	CONTACT	PHOSPHOR BRONZE	Au ON CONTACT AREA
1	HOUSING	LCP,94V-0	BLACK

Ordering Information:

Circuit	Dimensions(mm)		
	A	B	C
03P	4.6	3.0	3.9
	5.0	3.4	4.3
	5.4	3.8	4.7
	6.0	4.4	5.3
	6.8	5.2	6.1
	7.2	5.6	6.5



SCALE: 1:1 UNIT: mm
SIZE: A4

Unless otherwise
General Tolerance:
X ±0.35
X.x ±0.25
X.xx ±0.15
X.xxx ±0.05
X* ±3°

Title: Horizontal Pitch3.0 3Pin Battery Conn
SMT 9.0×3.5×H(A)mm

Molde Code: GT-BTP30003-XXXXA-016A

DRAWN	CHECKED	APPROVED	DATE
Xia	Chen	Chen	2023.12.28



REV: A0 SHEET: 1/1