

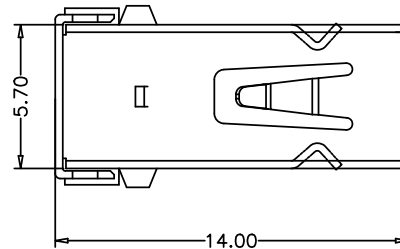
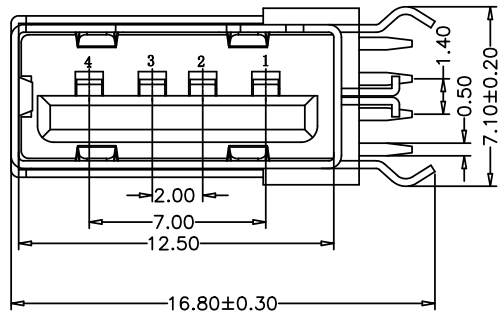
RoHS

MAPX

MODIFICATION

DRW

DATE



电气特性:Electrical:

1. 额定电流: Current Rating  
1.5A/contact terminal
2. 额定电压: Voltage Rating  
30V DC
3. 接触阻抗: Contact Resistance  
30 milliohms MAX
4. 耐电压: Dielectric Withstanding Voltage:  
500 V AC AT Sea Level
5. 绝缘阻抗: Insulation Resistance:  
1000MEGA ohms MIN

物理性能: Mechanical:

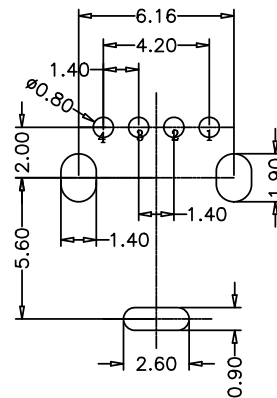
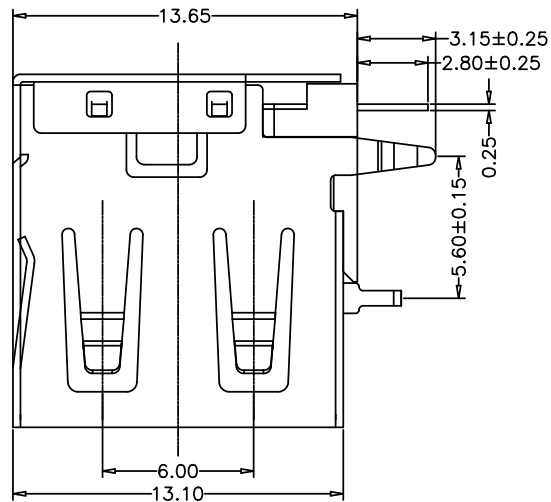
1. 插拔力: Connector Mate and Unmate Force  
Mate force: 3.57kgf (MAX)  
Unmate force: 0.7kgf (MIN)
2. 端子保持力: Terminal Retention  
1.0kgf (MIN)
3. 寿命: 1500次

原材料: Material:

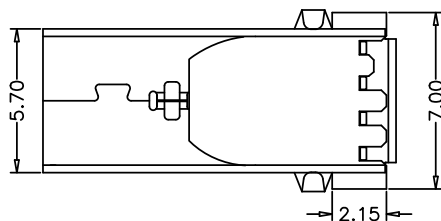
1. 塑胶: Housing: pbt/LCP
2. 端子: Contact: Copper Alloy C2680
3. 外壳: Shell: SPCC/C2680

电镀: Finish:

1. 端子 Contact: Au G/F u" Plated on contact area  
Tin50u" Plated on solder area  
Nickel 50u" Plated underplating over all.
2. 外壳 Shell: Nickel 50u" Min plating over all.



RECOMMENDED PCB LAYOUT  
GENERAL TOLERANCES: ±0.05



Pin NUMBER	SIGNAL NAME
1	VBUS
2	D-
3	D+
4	GND

产品图 PRODUCT CHART DWG			
公差一览表 TOLERANCE UNLESS OTHERWISE			
X	±0.35	X	±5.°
.X	±0.25	.X	±2.°
.XX	±0.20	.XX	±1.°
.XXX	±0.05	.XXX	±0.5°

深圳市精拓金电子有限公司 Shenzhen Jing Tuo Jin Electronics Co., Ltd.									
单位 UNITS	MM	制图 DRAWING	L-S-S	制图料号 PRODUCT PART NO.	906-262A1021D10200				
比例 SCALE	1:1	审核 CHKD	G-Z-F	产品名称 PRODUCT NAME	AF14.0侧插短体三弯脚无边铜壳PBT黑胶				
日期 DATE	2021-03-10	核准 APPD	黄国荣	角法 VIEW	版本 VER	AO			