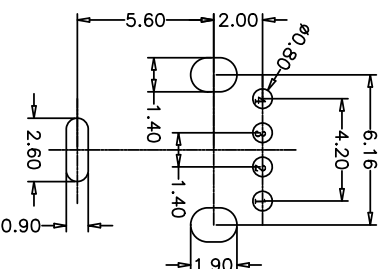
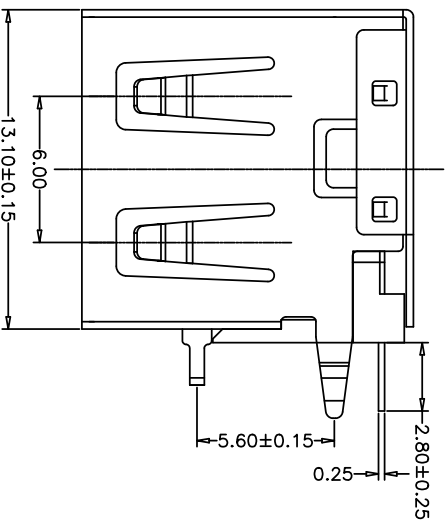
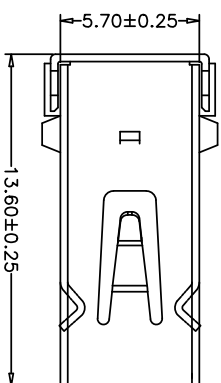
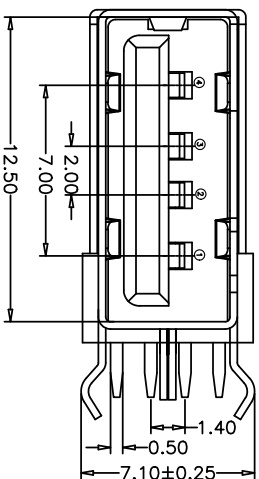
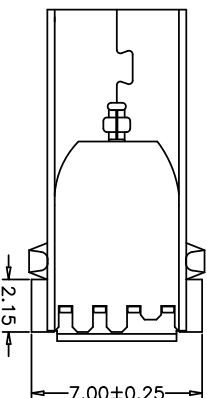


RoHS



RECOMMENDED PCB LAYOUT
GENERAL TOLERANCES: ±0.05



目錄 MAPX	變更內容 MODIFICATION	日期 DATE
------------	----------------------	------------

电气特性:Electrical:

- 额定电流: Current Rating
1.5A/contact terminal
- 额定电压: Voltage Rating
30V DC
- 接触电阻: Contact Resistance
30 milliohms MAX
- 耐电压: Dielectric Withstanding Voltage:
500 V AC AT Sea level
- 绝缘电阻: Insulation Resistance:
100MEGA ohms MIN

物理性能:Mechanical:

- 插拔力: Connector Mate and Umate Force
Mate force:3.57kgf (MAX)
Umate force:0.7kgf (MIN)
- 端子保持力: Terminal Retention
1.0kgf (MIN)
- 寿命: 1500次
原材料: Matorial:
1. 塑胶: Housing: LCP / pbt
2. 端子: Contact: Copper Alloy C2680
3. 外壳: Shell: SPCC/c2680
电镀: Finish:
1. 端子 Contact: Au G/F u" Plated on contact area
Tin50u" Plated on solder area
Nickel 50u" Plated underplating over all.
2. 外壳 Shell: Nickel 50u" Min plating over all.

产品图
PRODUCT CHART DWG

Pin NUMBER	SIGNAL NAME
------------	-------------

1	VBUS
2	D-
3	D+
4	GND

公差一览表 TOLERANCE UNLESS OTHERWISE	单位 UNITS	MM	制图 DRAWING	L S S	产品料号 PRODUCT PART NO.	906-362A1012D10200
X ±0.35	X'	±5'	审核 CHKD	郭志富	产品名称 PRODUCT NO.	1F13.65耐插板体外等内重无边 铜壳BT自胶
X ±0.30	X'	±2'	日期 SCALE	2015/10/20	角法 NEW	版本 VER
XX ±0.25	XX'	±1'	批准 APPD	黄国荣		A0

深圳市精拓金电子有限公司

您正在使用 ZWCAD 2022 个人版, 不得用于商业用途, 详情请咨询 4006718259