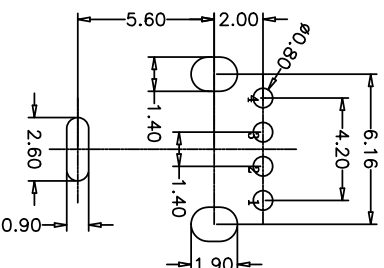
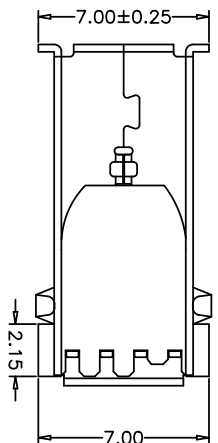
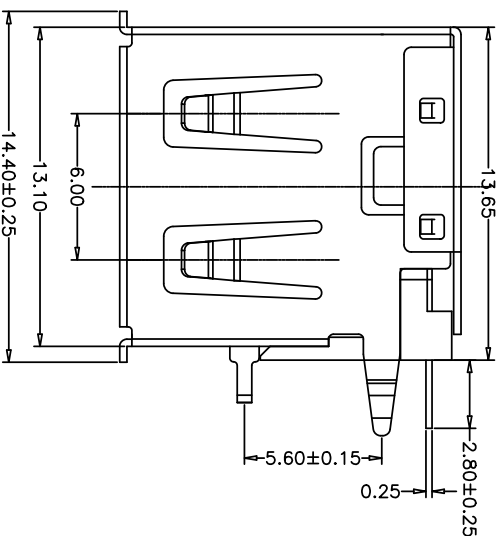
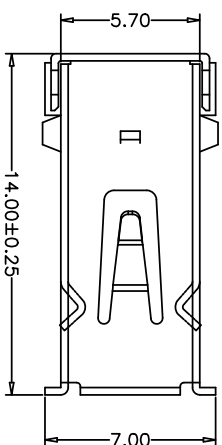
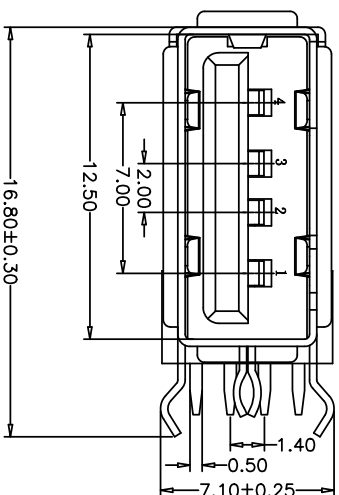


RoHS



RECOMMENDED PCB LAYOUT
GENERAL TOLERANCES: ±0.05

目録 MAPX	変更内容 MODIFICATION	日期 DATE
------------	----------------------	------------

电气特性:Electrical:

- 额定电流: Current Rating
1.5A/contact terminal
 - 额定电压: Voltage Rating
30V DC
 - 接触阻抗: Contact Resistance
30 milliohms MAX
 - 耐电压: Dielectric Withstanding Voltage:
500 V AC AT Sea level
 - 绝缘阻抗: Insulation Resistance:
1000MEGA ohms MIN
- 物理性能: Mechanical:
- 插拔力: Connector Mate and Unmate Force
Mate force: 3.57kgf (MAX)
Unmate force: 0.7kgf (MIN)
 - 端子保持力: Terminal Retention
1.0kgf (MIN)
 - 寿命: 1500次
 - 原材料: Material:
- 塑胶: Housing: pbt/LCP
 - 端子: Contact: Copper Alloy C2680
 - 外壳: Shell: SPCC/C2680
- 电镀: Finish:
- 端子Contact: Au G/F u" Plated on contact area
Tin50u" Plated on solder area
 - Nickel 50u" Plated underplating over all.
 - 外壳Shell: Nickel 50u" Min plating over all.

产品图 PRODUCT CHART DWG		单位 UNITS		制图 DRAWING		产品料号 PRODUCT PART NO.	
公差一览表 TOLERANCE UNLESS OTHERWISE		MM	1:1	LSS	906-451A1021D10200	906-451A1021D10200	
Pin NUMBER	SIGNAL NAME	X	±0.35	X	±5'	审核 CHKD	产品名称 PRODUCT NAME
1	VBUS	X	±0.30	X	±2'	黄国荣	AT14.0侧插短体外零内0型脚有边 镀壳B7T黑胶
2	D-	.XX	±0.25	.XX	±1'	日期 SCALE	版本 VER
3	D+	.XX	±0.10	.XX	±0.5'	2021/03/10	A0
4	GND	.XX	±0.10	.XX	±0.5'	182-598	

深圳市精拓金电子有限公司

您正在使用 ZW3D CAD 2022 个人版, 不得用于商业用途, 详情请咨询 400657182-598