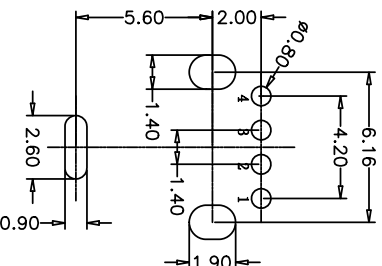
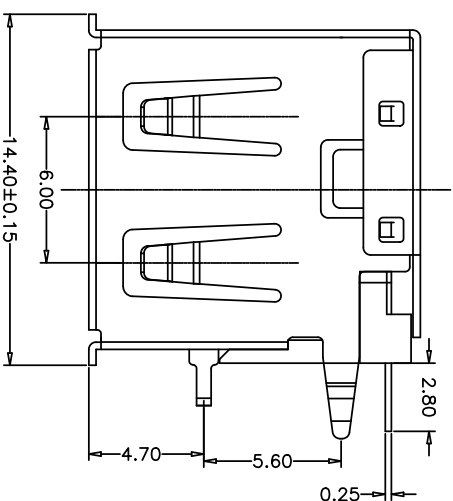
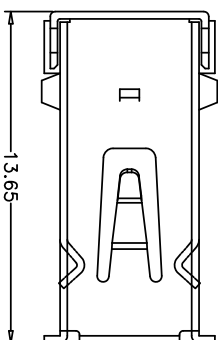
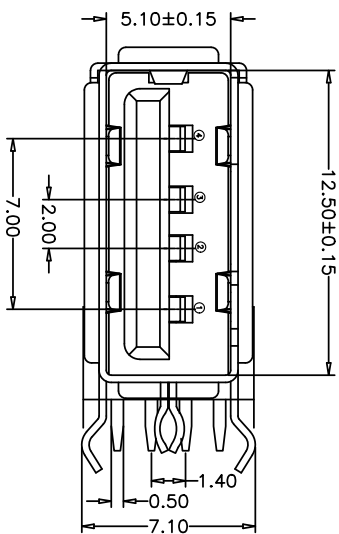
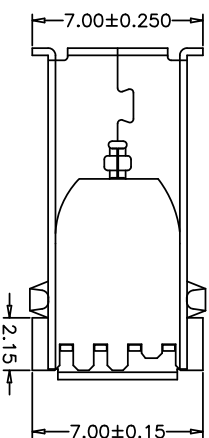


RoHS



RECOMMENDED PCB LAYOUT
GENERAL TOLERANCES: ±0.05



- 电气特性:Electrical:
- 额定电流: Current Rating
1.5A/contact terminal
 - 额定电压: Voltage Rating
30V DC
 - 接触电阻: Contact Resistance
30 milliohms MAX
 - 耐电压: Dielectric Withstanding Voltage:
500 V AC AT Sea level
 - 绝缘电阻: Insulation Resistance:
100MEGA ohms MIN
- 物理性能:Mechanical:
- 插拔力: Connector Mate and Umate Force
Mate force::3.57kgf (MAX)
Umate force:0.7kgf (MIN)
 - 端子保持力: Terminal Retention
1.0kgf (MIN)
 - 寿命: 1500次
- 原材料:Material:
- 塑胶:Housing:LCP /pbt
 - 端子:Contact:Copper Alloy C2680
 - 外壳:Shell:SPCC/c2680
- 电镀:Finish:
- 端子Contact: Au G/F u" Plated on contact area
Tin50u" Plated on solder area
 - 外壳Shell: Nickel 50u" Min plating over all.

Pin NUMBER	SIGNAL NAME
1	VBUS
2	D-
3	D+
4	GND

公差一览表	
TOLERANCE UNLESS OTHERWISE	公差一览表
X	±0.35
X	±0.50
.XX	±0.25
.XXX	±0.10
.XXXX	±0.05

单位	MM	制图	L S S	产品料号	906-452A1012010200
比例	1:1	审核	郭志富	产品名称	AT13 65脚插板外壳内0型脚
日期	2015/10/20	批准	黄国荣	角法	有边脚壳打白胶
SCALE		APPD		版本	VER
SCALE				版本	A0

深圳市精拓金电子有限公司

您正在使用 ZWGCAD 2022 个人版, 不得用于商业用途, 详情请咨询 4006718259

1 2 3 4 5 6 7 8 9 10