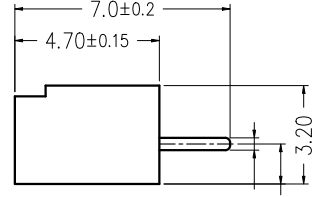
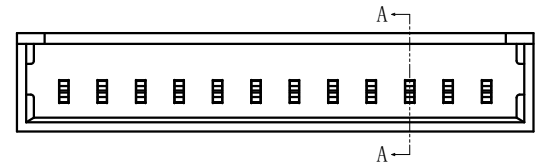
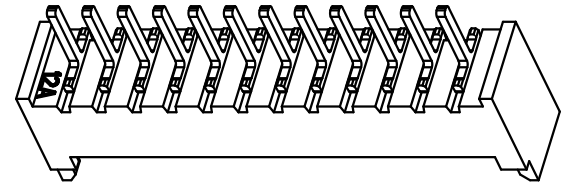
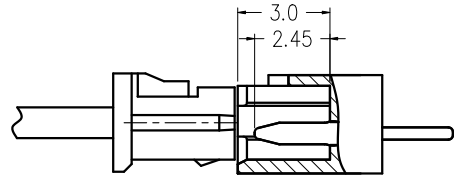
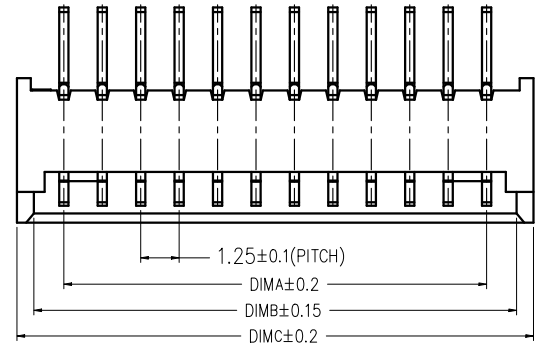
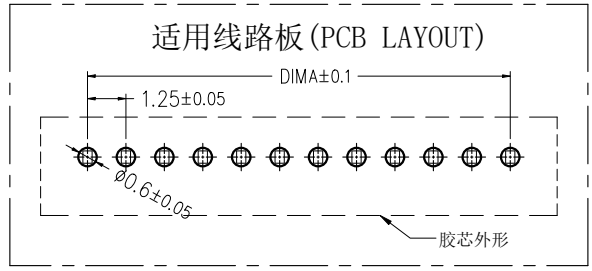
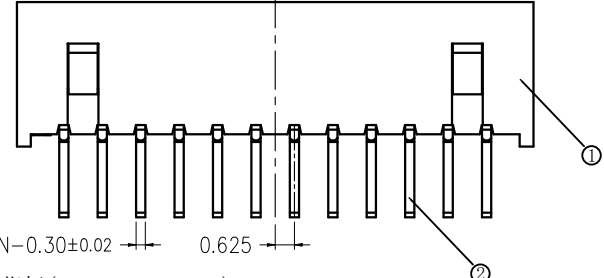


版次	变更摘要	日期	序号	品名	材质
0	新产品发行	2018/01/18	①	A型立式DIP型WTB胶芯 1.25 Pitch S/T Wire To Board Housing DIP(H=4.7)	PA66 UL94V-0 本色(常规用料) Natural/Pine Conventional material
1	料号变更	2024/09/26	②	A型立式DIP型WTB端子 1.25 Pitch S/T Wire To Board Terminal DIP(H=4.7)	铜合金/表面镀锡 Copper Alloy/ Tin Plating



SECTION A-A



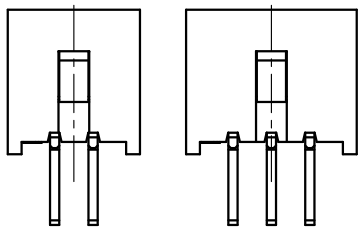
CKT	DIM A	DIM B	DIM C
2	1.25	3.20	4.30
3	2.50	4.45	5.55
4	3.75	5.70	6.80
5	5.00	6.95	8.05
6	6.25	8.20	9.30
7	7.50	9.45	10.55
8	8.75	10.70	11.80
9	10.00	11.95	13.05
10	11.25	13.20	14.30
11	12.50	14.45	15.55
12	13.75	15.70	16.80
13	15.00	16.95	18.05
14	16.25	18.20	19.30
15	17.50	19.45	20.55
16	18.75	20.70	21.80
17	20.00	21.95	23.05
18	21.25	23.20	24.30
19	22.50	24.45	25.55
20	23.75	25.70	26.80

技术指标(Technical Index):

- 塑件表面应光洁、无毛边、无明显收缩、缺陷、裂纹等现象。(The surface of the plastic parts should be smooth, no rough edges, no obvious shrinkage, defects, cracks and other phenomena)
- 锁扣窗口: 2~3PIN为1个, ≥4PIN为2个.
(Lock Configuration: 2 to 3Pin is 1, ≥4Pin is 2)
- 温度范围(Temperature range): -25° C~+85° C.
- 额定电压(Rated voltage): 125V, AC/DC(=等效).
- 接触电阻(Contact resistance): ≤0.02Ω.
- 绝缘电阻(Insulation resistance): ≥100MΩ
- 产品料号(Product material No.):

WT125A1V-*** * * -***

- NO OF CKT(产品PIN数)
- 流水码
- Plating(电镀方式)
- Packing(包装方式)
- 0:端子全雾锡
- P:PE袋装
- Terminal all mist tin
- B:盒装
- 3:端子全亮锡
- Terminal all bright tin



2 PIN 3 PIN
LOCK CONFIGURATION (锁扣位置)



一般公差(TOLERANCE)
X ±.50 .XX ±.10
X ±.20 .XXX ±.05
ANGLES ±1'

ZGWD 浙江温达电子有限公司
ZHEJIANG WENDA ELECTRONICS CO., LTD

品名(TITLE)	1.25 Pitch A型直针WTB 1.25 PITCH H4.7 S/T WIRE TO BOARD DIP CONN.	制图(DR)	ANLAN
料号(DWG.NO)	WT125A1V-***-***	校对(CHKD)	田峰
比例(SCALE)	1:1	审核(APPD)	黄志明
单位(UNITS)	mm	张数(SHEET)	1 OF 1
		SIZE	A4
		REV	A