

1 2 3 4 5 6 7 8

版本	变更内容	工程确认	日期

A

B

C

D

E

F

A

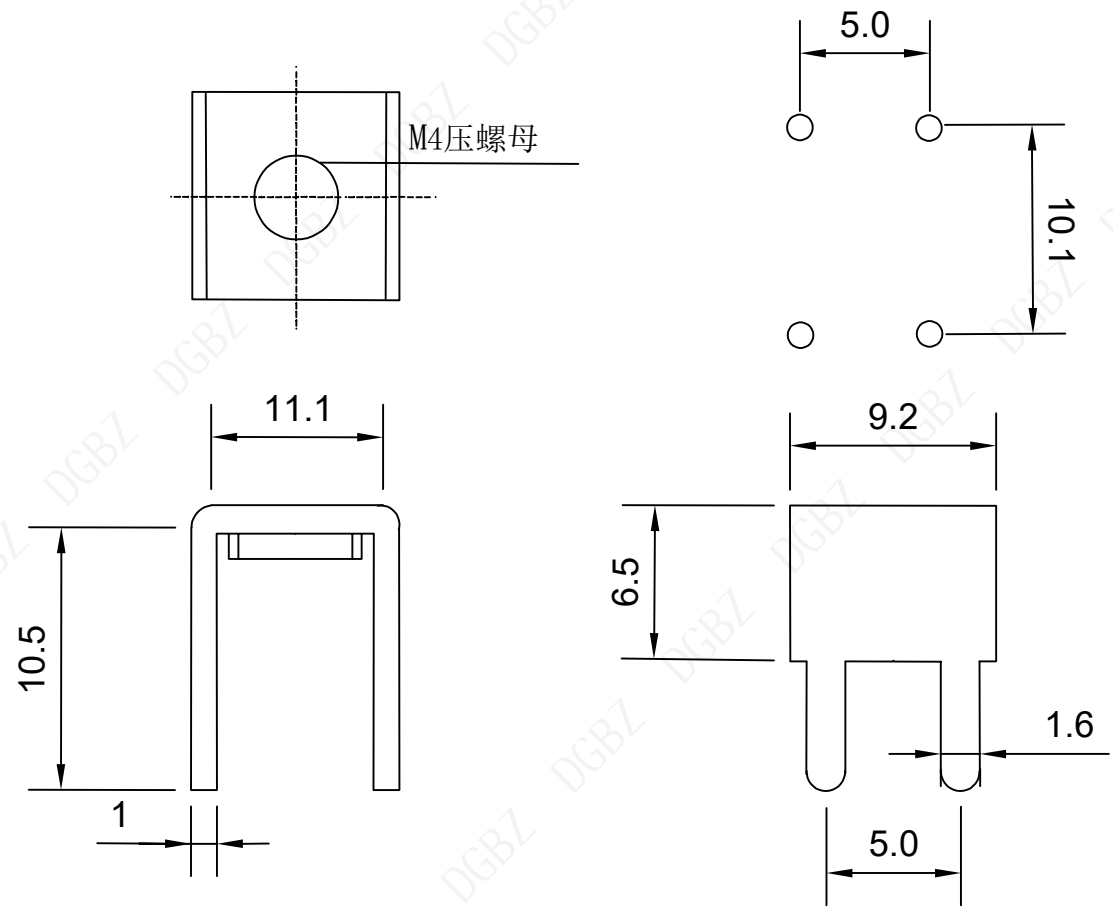
B

C

D


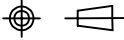
E

F



技术要求:

- 1、铜材厚度1.0MM, 表面整体镀锡
- 2、表观不变形, 表面无划痕, 无锐边毛刺
- 3、未标注公差值GB/T1184-1996H级

 <b>东莞市博众电气有限公司</b> DONGGUAN BOZHONG ELECTRIC CO., LTD	页码 (SHEET)	1/1	单位 (UNIT): MM
	版本 (REV)	A1	比例 (SCALE)
品名 (ITEM NO)	M4黄铜螺母4脚亮锡焊脚端子	日期 (DATE)	2021.10.12 
料号 (PART NO)	BTC24M4BA4VBM	设计 (DESIGN)	LUO
图号 (DWG NO)		审核 (CHECKED)	ROGER LI
		核准 (APPROVED)	ROC ZHAO

未注公差 TOLERANCE UNSPECIFIED	
X. ±0.20	X° ±4°
.X ±0.10	.X° ±2°
.XX ±0.05	.XX° ±1°

These drawings and specifications are Shenzhen Yiyuan Technology Co Ltd. The property should not be copied. Without Shenzhen Yiyuan Technology Co. Ltd. Prior written consent to copy or use in any way.

1 2 3 4 5 6 7 8