

零件承认书

SPECIFICATION FOR APPROVAL

客户名称: 0001

规格描述: ZECD功率电感系列规格书

日期: 2024/08/10

增益签核:

| 制订 | 审核 | 核准 |
|----|----|----|
| 夏琳 | 陈雨 | 李万 |

客户签核:

| 工程 | 审核 | 核准 |
|----|----|----|
| | | |



东莞市增益实业有限公司

地址: 东莞市塘厦镇林村塘厦大道北552号

电话: 0769-87321000

传真: 0769-87891229

物料类型:

功率电感

日期:

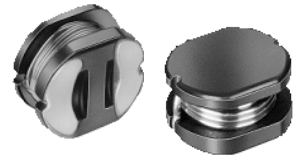
2024/08/10

版本:

A



ZECD Power Inductors 功率电感系列



■ Features

- 1.Excellent solderability and high heat resistance.
- 2.Excellent terminal strength construction.
- 3.Packed in embossed carrier tape and can be used by automatic mounting machine.

● 特征

- 1.絕佳的焊錫性及高溫耐熱性。
- 2.絕佳的端面強度結構。
- 3.捲軸包裝，可用於自動插件機器。

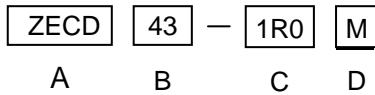
■ Applications

Power supply for VCR,OA equipment ,LCD television set, notebook, DC to DC converters, DC to AC inverters etc.

● 用途

VCR、辦公室自動設備、液晶電視機、筆記型電腦、直流-直流整流器、直流-交流換流器等的電源供應器。

■ Feed Free Part Numbering



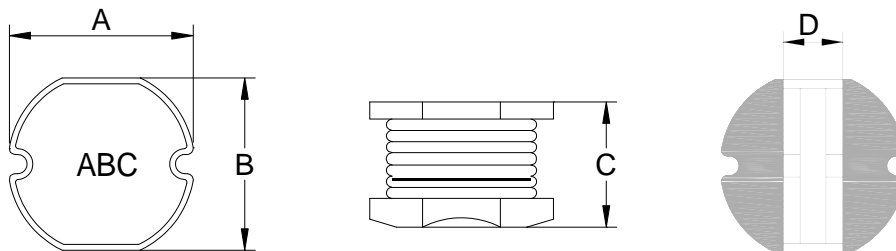
A.Series

B.Dimension A x C

C.Inductance 1R0=1.0uH,100=10uH,101=100uH

D.Inductance Tolerance K=±10%,M=±20%

■ Dimensions



| Series | A | B | C | D ref |
|---------|----------|---------|---------|-------|
| ZECD31 | 3.5±0.3 | 3.0±0.3 | 1.6±0.3 | 1.0 |
| ZECD32 | 3.5±0.3 | 3.0±0.3 | 2.1±0.3 | 1.0 |
| ZECD42 | 4.5±0.3 | 4.0±0.3 | 2.0±0.3 | 1.4 |
| ZECD43 | 4.5±0.3 | 4.0±0.3 | 3.2±0.3 | 1.4 |
| ZECD52 | 5.8±0.3 | 5.2±0.3 | 2.0±0.3 | 1.6 |
| ZECD53 | 5.8±0.3 | 5.2±0.3 | 3.0±0.3 | 1.6 |
| ZECD54 | 5.8±0.3 | 5.2±0.3 | 4.5±0.3 | 1.6 |
| ZECD73 | 7.8±0.3 | 7.0±0.3 | 3.5±0.3 | 2.4 |
| ZECD75 | 7.8±0.3 | 7.0±0.3 | 5.0±0.3 | 2.4 |
| ZECD104 | 10.0±0.3 | 9.0±0.3 | 4.0±0.3 | 3.1 |
| ZECD105 | 10.0±0.3 | 9.0±0.3 | 5.4±0.3 | 3.1 |

■ZECD31 Series

| Part Number | Inductance (uH) | Test Frequency (Hz) | DCR (Ω)max | IDC (A)max |
|-------------|-----------------|---------------------|------------|------------|
| ZECD31-1R0M | 1.0±20% | 100K/0.25V | 0.048 | 1.60 |
| ZECD31-1R5M | 1.5±20% | 100K/0.25V | 0.078 | 1.55 |
| ZECD31-2R2M | 2.2±20% | 100K/0.25V | 0.100 | 1.47 |
| ZECD31-3R3M | 3.3±20% | 100K/0.25V | 0.126 | 1.34 |
| ZECD31-3R9M | 3.9±20% | 100K/0.25V | 0.140 | 1.24 |
| ZECD31-4R7M | 4.7±20% | 100K/0.25V | 0.158 | 1.22 |
| ZECD31-5R6M | 5.6±20% | 100K/0.25V | 0.186 | 1.09 |
| ZECD31-6R8M | 6.8±20% | 100K/0.25V | 0.213 | 0.96 |
| ZECD31-8R2M | 8.2±20% | 100K/0.25V | 0.238 | 0.84 |
| ZECD31-100M | 10±20% | 1K/0.25V | 0.307 | 0.70 |
| ZECD31-120M | 12±20% | 1K/0.25V | 0.372 | 0.65 |
| ZECD31-150M | 15±20% | 1K/0.25V | 0.466 | 0.59 |
| ZECD31-180M | 18±20% | 1K/0.25V | 0.515 | 0.54 |
| ZECD31-220M | 22±20% | 1K/0.25V | 0.656 | 0.48 |
| ZECD31-270M | 27±20% | 1K/0.25V | 0.774 | 0.43 |
| ZECD31-330M | 33±20% | 1K/0.25V | 1.021 | 0.37 |
| ZECD31-390M | 39±20% | 1K/0.25V | 1.122 | 0.32 |
| ZECD31-470M | 47±20% | 1K/0.25V | 1.509 | 0.26 |
| ZECD31-560M | 56±20% | 1K/0.25V | 1.675 | 0.24 |
| ZECD31-680M | 68±20% | 1K/0.25V | 1.919 | 0.23 |
| ZECD31-820M | 82±20% | 1K/0.25V | 2.644 | 0.21 |
| ZECD31-101M | 100±20% | 1K/0.25V | 2.870 | 0.19 |
| ZECD31-121M | 120±20% | 1K/0.25V | 4.084 | 0.17 |
| ZECD31-151M | 150±20% | 1K/0.25V | 4.774 | 0.16 |
| ZECD31-181M | 180±20% | 1K/0.25V | 5.699 | 0.14 |

■ZECD32 Series

| Part Number | Inductance (uH) | Test Frequency (Hz) | DCR (Ω)max | IDC (A)max |
|-------------|-----------------|---------------------|------------|------------|
| ZECD32-1R0M | 1.0±20% | 100K/0.25V | 0.035 | 3.34 |
| ZECD32-2R2M | 2.2±20% | 100K/0.25V | 0.059 | 2.35 |
| ZECD32-3R3M | 3.3±20% | 100K/0.25V | 0.098 | 1.83 |
| ZECD32-4R7M | 4.7±20% | 100K/0.25V | 0.137 | 1.50 |
| ZECD32-5R6M | 5.6±20% | 100K/0.25V | 0.157 | 1.36 |
| ZECD32-6R8M | 6.8±20% | 100K/0.25V | 0.196 | 1.22 |
| ZECD32-8R2M | 8.2±20% | 100K/0.25V | 0.230 | 1.09 |
| ZECD32-100K | 10±10% | 1K/0.25V | 0.286 | 0.95 |
| ZECD32-120K | 12±10% | 1K/0.25V | 0.322 | 0.88 |
| ZECD32-150K | 15±10% | 1K/0.25V | 0.398 | 0.82 |
| ZECD32-180K | 18±10% | 1K/0.25V | 0.520 | 0.76 |
| ZECD32-220K | 22±10% | 1K/0.25V | 0.660 | 0.63 |
| ZECD32-270K | 27±10% | 1K/0.25V | 0.760 | 0.62 |

■ZECD32 Series

| Part Number | Inductance (uH) | Test Frequency (Hz) | DCR (Ω)max | IDC (A)max |
|-------------|-----------------|---------------------|---------------------|------------|
| ZECD32-330K | 33±10% | 1K/0.25V | 0.87 | 0.56 |
| ZECD32-390K | 39±10% | 1K/0.25V | 1.10 | 0.51 |
| ZECD32-470K | 47±10% | 1K/0.25V | 1.25 | 0.47 |
| ZECD32-560K | 56±10% | 1K/0.25V | 1.59 | 0.42 |
| ZECD32-680K | 68±10% | 1K/0.25V | 1.82 | 0.38 |
| ZECD32-820K | 82±10% | 1K/0.25V | 2.44 | 0.34 |
| ZECD32-101K | 100±10% | 1K/0.25V | 2.84 | 0.31 |
| ZECD32-121K | 120±10% | 1K/0.25V | 3.19 | 0.28 |
| ZECD32-151K | 150±10% | 1K/0.25V | 4.20 | 0.175 |
| ZECD32-181K | 180±10% | 1K/0.25V | 5.11 | 0.17 |
| ZECD32-221K | 220±10% | 1K/0.25V | 7.31 | 0.16 |
| ZECD32-271K | 270±10% | 1K/0.25V | 8.24 | 0.14 |
| ZECD32-331K | 330±10% | 1K/0.25V | 10.19 | 0.13 |

■ZECD42 Series

| Part Number | Inductance (uH) | Test Frequency (Hz) | DCR (Ω)max | IDC (A)max |
|-------------|-----------------|---------------------|---------------------|------------|
| ZECD42-2R7M | 2.7±20% | 100K/0.25V | 0.065 | 1.50 |
| ZECD42-4R7M | 4.7±20% | 100K/0.25V | 0.095 | 1.40 |
| ZECD42-100M | 10±20% | 1K/0.25V | 0.18 | 0.97 |
| ZECD42-220M | 22±20% | 1K/0.25V | 0.45 | 0.60 |
| ZECD42-260M | 26±20% | 1K/0.25V | 0.47 | 0.55 |
| ZECD42-330M | 33±20% | 1K/0.25V | 0.50 | 0.54 |
| ZECD42-390M | 39±20% | 1K/0.25V | 0.70 | 0.50 |
| ZECD42-470M | 47±20% | 1K/0.25V | 0.80 | 0.48 |
| ZECD42-560M | 56±20% | 1K/0.25V | 0.90 | 0.45 |
| ZECD42-101M | 100±20% | 1K/0.25V | 1.50 | 0.10 |
| ZECD42-151M | 150±20% | 1K/0.25V | 2.30 | 0.09 |

■ZECD43 Series

| Part Number | Inductance (uH) | Test Frequency (Hz) | DCR (Ω)max | IDC (A)max |
|-------------|-----------------|---------------------|---------------------|------------|
| ZECD43-1R0M | 1.0±20% | 100K/0.25V | 0.033 | 3.80 |
| ZECD43-2R2M | 2.2±20% | 100K/0.25V | 0.047 | 2.60 |
| ZECD43-3R3M | 3.3±20% | 100K/0.25V | 0.052 | 2.43 |
| ZECD43-3R9M | 3.9±20% | 100K/0.25V | 0.058 | 2.15 |
| ZECD43-4R7M | 4.7±20% | 100K/0.25V | 0.094 | 1.70 |
| ZECD43-6R8M | 6.8±20% | 100K/0.25V | 0.117 | 1.50 |
| ZECD43-8R2M | 8.2±20% | 100K/0.25V | 0.132 | 1.26 |

■ZECD43 Series

| Part Number | Inductance (uH) | Test Frequency (Hz) | DCR (Ω)max | IDC (A)max |
|-------------|-----------------|---------------------|---------------------|------------|
| ZECD43-100M | 10±20% | 1K/0.25V | 0.182 | 1.20 |
| ZECD43-120M | 12±20% | 1K/0.25V | 0.210 | 1.10 |
| ZECD43-150M | 15±20% | 1K/0.25V | 0.235 | 0.95 |
| ZECD43-180M | 18±20% | 1K/0.25V | 0.338 | 0.84 |
| ZECD43-220M | 22±20% | 1K/0.25V | 0.378 | 0.76 |
| ZECD43-270M | 27±20% | 1K/0.25V | 0.522 | 0.71 |
| ZECD43-330M | 33±20% | 1K/0.25V | 0.540 | 0.64 |
| ZECD43-390M | 39±20% | 1K/0.25V | 0.587 | 0.59 |
| ZECD43-470M | 47±20% | 1K/0.25V | 0.844 | 0.54 |
| ZECD43-560M | 56±20% | 1K/0.25V | 0.937 | 0.50 |
| ZECD43-680M | 68±20% | 1K/0.25V | 1.117 | 0.46 |
| ZECD43-820M | 82±20% | 1K/0.25V | 1.180 | 0.45 |
| ZECD43-101K | 100±10% | 1K/0.25V | 1.190 | 0.44 |
| ZECD43-121M | 120±20% | 1K/0.25V | 1.220 | 0.38 |
| ZECD43-151K | 150±10% | 1K/0.25V | 1.400 | 0.35 |
| ZECD43-181M | 180±20% | 1K/0.25V | 1.500 | 0.31 |
| ZECD43-221K | 220±10% | 1K/0.25V | 1.641 | 0.29 |
| ZECD43-271M | 270±20% | 1K/0.25V | 2.890 | 0.28 |
| ZECD43-331K | 330±10% | 1K/0.25V | 3.760 | 0.28 |

■ZECD52 Series

| Part Number | Inductance (uH) | Test Frequency (Hz) | DCR (Ω)max | IDC (A)max |
|-------------|-----------------|---------------------|---------------------|------------|
| ZECD52-1R0M | 1.0±20% | 100K/0.25V | 0.05 | 4.2 |
| ZECD52-2R2M | 2.2±20% | 100K/0.25V | 0.08 | 3.2 |
| ZECD52-3R3M | 3.3±20% | 100K/0.25V | 0.12 | 2.4 |
| ZECD52-3R9M | 3.9±20% | 100K/0.25V | 0.14 | 2.0 |
| ZECD52-4R7M | 4.7±20% | 100K/0.25V | 0.15 | 1.8 |
| ZECD52-5R6M | 5.6±20% | 100K/0.25V | 0.16 | 1.5 |
| ZECD52-6R8M | 6.8±20% | 100K/0.25V | 0.17 | 1.4 |
| ZECD52-8R2M | 8.2±20% | 100K/0.25V | 0.20 | 1.3 |
| ZECD52-100M | 10±20% | 1K/0.25V | 0.23 | 1.1 |
| ZECD52-120M | 12±20% | 1K/0.25V | 0.25 | 1.05 |
| ZECD52-150M | 15±20% | 1K/0.25V | 0.30 | 1.00 |
| ZECD52-180M | 18±20% | 1K/0.25V | 0.35 | 0.90 |
| ZECD52-220M | 22±20% | 1K/0.25V | 0.40 | 0.85 |
| ZECD52-270M | 27±20% | 1K/0.25V | 0.50 | 0.75 |
| ZECD52-330M | 33±20% | 1K/0.25V | 0.55 | 0.70 |
| ZECD52-390M | 39±20% | 1K/0.25V | 0.65 | 0.60 |
| ZECD52-470M | 47±20% | 1K/0.25V | 0.75 | 0.55 |
| ZECD52-560M | 56±20% | 1K/0.25V | 0.95 | 0.50 |

■ZECD52 Series

| Part Number | Inductance (uH) | Test Frequency (Hz) | DCR (Ω)max | IDC (A)max |
|-------------|-----------------|---------------------|---------------------|------------|
| ZECD52-680M | 68±20% | 1K/0.25V | 1.20 | 0.45 |
| ZECD52-820M | 82±20% | 1K/0.25V | 1.40 | 0.40 |
| ZECD52-101M | 100±20% | 1K/0.25V | 1.75 | 0.35 |
| ZECD52-121M | 120±20% | 1K/0.25V | 2.0 | 0.25 |
| ZECD52-151M | 150±20% | 1K/0.25V | 2.6 | 0.22 |
| ZECD52-181M | 180±20% | 1K/0.25V | 3.7 | 0.18 |
| ZECD52-221M | 220±20% | 1K/0.25V | 4.0 | 0.19 |
| ZECD52-271M | 270±20% | 1K/0.25V | 4.2 | 0.20 |

■ZECD53 Series

| Part Number | Inductance (uH) | Test Frequency (Hz) | DCR (Ω)max | IDC (A)max |
|-------------|-----------------|---------------------|---------------------|------------|
| ZECD53-1R0M | 1.0±20% | 100K/0.25V | 0.038 | 4.5 |
| ZECD53-2R2M | 2.2±20% | 100K/0.25V | 0.045 | 3.5 |
| ZECD53-3R3M | 3.3±20% | 100K/0.25V | 0.055 | 2.8 |
| ZECD53-3R9M | 3.9±20% | 100K/0.25V | 0.064 | 2.6 |
| ZECD53-4R7M | 4.7±20% | 100K/0.25V | 0.072 | 2.5 |
| ZECD53-5R6M | 5.6±20% | 100K/0.25V | 0.084 | 2.4 |
| ZECD53-6R8M | 6.8±20% | 100K/0.25V | 0.09 | 2.2 |
| ZECD53-8R2M | 8.2±20% | 100K/0.25V | 0.10 | 2.0 |
| ZECD53-100K | 10±10% | 1K/0.25V | 0.12 | 1.8 |
| ZECD53-120K | 12±10% | 1K/0.25V | 0.13 | 1.8 |
| ZECD53-150K | 15±10% | 1K/0.25V | 0.15 | 1.7 |
| ZECD53-180K | 18±10% | 1K/0.25V | 0.18 | 1.6 |
| ZECD53-220K | 22±10% | 1K/0.25V | 0.22 | 1.5 |
| ZECD53-270K | 27±10% | 1K/0.25V | 0.24 | 1.4 |
| ZECD53-330K | 33±10% | 1K/0.25V | 0.30 | 1.1 |
| ZECD53-390K | 39±10% | 1K/0.25V | 0.40 | 1.0 |
| ZECD53-470K | 47±10% | 1K/0.25V | 0.43 | 1.0 |
| ZECD53-560K | 56±10% | 1K/0.25V | 0.5 | 0.85 |
| ZECD53-680K | 68±10% | 1K/0.25V | 0.6 | 0.80 |
| ZECD53-820K | 82±10% | 1K/0.25V | 0.8 | 0.65 |
| ZECD53-101K | 100±10% | 1K/0.25V | 0.9 | 0.63 |
| ZECD53-121K | 120±10% | 1K/0.25V | 1.0 | 0.58 |
| ZECD53-151K | 150±10% | 1K/0.25V | 1.3 | 0.48 |
| ZECD53-181K | 180±10% | 1K/0.25V | 1.5 | 0.41 |
| ZECD53-221K | 220±10% | 1K/0.25V | 2.0 | 0.38 |
| ZECD53-271K | 270±10% | 1K/0.25V | 2.5 | 0.35 |
| ZECD53-331K | 330±10% | 1K/0.25V | 3.2 | 0.28 |

■ZECD54 Series

| Part Number | Inductance (uH) | Test Frequency (Hz) | DCR (Ω)max | IDC (A)max |
|-------------|-----------------|---------------------|------------|------------|
| ZECD54-1R0M | 1.0±20% | 100K/0.25V | 0.020 | 5.9 |
| ZECD54-1R5M | 1.5±20% | 100K/0.25V | 0.025 | 4.8 |
| ZECD54-2R2M | 2.2±20% | 100K/0.25V | 0.027 | 4.5 |
| ZECD54-2R7M | 2.7±20% | 100K/0.25V | 0.030 | 3.5 |
| ZECD54-3R3M | 3.3±20% | 100K/0.25V | 0.034 | 3.5 |
| ZECD54-4R7M | 4.7±20% | 100K/0.25V | 0.04 | 2.8 |
| ZECD54-6R8M | 6.8±20% | 100K/0.25V | 0.08 | 2.5 |
| ZECD54-100M | 10±20% | 1K/0.25V | 0.10 | 1.45 |
| ZECD54-120M | 12±20% | 1K/0.25V | 0.12 | 1.40 |
| ZECD54-150M | 15±20% | 1K/0.25V | 0.14 | 1.40 |
| ZECD54-180M | 18±20% | 1K/0.25V | 0.15 | 1.23 |
| ZECD54-220M | 22±20% | 1K/0.25V | 0.18 | 1.20 |
| ZECD54-270M | 27±20% | 1K/0.25V | 0.20 | 0.98 |
| ZECD54-330M | 33±20% | 1K/0.25V | 0.23 | 0.90 |
| ZECD54-390M | 39±20% | 1K/0.25V | 0.32 | 0.80 |
| ZECD54-470M | 47±20% | 1K/0.25V | 0.37 | 0.75 |
| ZECD54-560M | 56±20% | 1K/0.25V | 0.42 | 0.68 |
| ZECD54-680K | 68±10% | 1K/0.25V | 0.46 | 0.65 |
| ZECD54-820K | 82±10% | 1K/0.25V | 0.60 | 0.58 |
| ZECD54-101K | 100±10% | 1K/0.25V | 0.70 | 0.52 |
| ZECD54-121K | 120±10% | 1K/0.25V | 0.93 | 0.50 |
| ZECD54-151K | 150±10% | 1K/0.25V | 1.10 | 0.45 |
| ZECD54-181K | 180±10% | 1K/0.25V | 1.38 | 0.40 |
| ZECD54-221K | 220±10% | 1K/0.25V | 1.57 | 0.37 |

■ZECD73 Series

| Part Number | Inductance (uH) | Test Frequency (Hz) | DCR (Ω)max | IDC (A)max |
|-------------|-----------------|---------------------|------------|------------|
| ZECD73-1R0M | 1.0±20% | 100K/0.25V | 0.018 | 7.0 |
| ZECD73-1R5M | 1.5±20% | 100K/0.25V | 0.020 | 6.0 |
| ZECD73-2R2M | 2.2±20% | 100K/0.25V | 0.023 | 5.0 |
| ZECD73-3R3M | 3.3±20% | 100K/0.25V | 0.025 | 4.0 |
| ZECD73-4R7M | 4.7±20% | 100K/0.25V | 0.039 | 3.5 |
| ZECD73-6R8M | 6.8±20% | 100K/0.25V | 0.04 | 2.8 |
| ZECD73-100M | 10±20% | 1K/0.25V | 0.08 | 1.50 |
| ZECD73-120M | 12±20% | 1K/0.25V | 0.09 | 1.39 |
| ZECD73-150M | 15±20% | 1K/0.25V | 0.10 | 1.24 |
| ZECD73-180M | 18±20% | 1K/0.25V | 0.11 | 1.12 |
| ZECD73-220M | 22±20% | 1K/0.25V | 0.13 | 1.07 |
| ZECD73-270M | 27±20% | 1K/0.25V | 0.15 | 0.94 |
| ZECD73-330M | 33±20% | 1K/0.25V | 0.17 | 0.85 |
| ZECD73-390M | 39±20% | 1K/0.25V | 0.22 | 0.74 |

■ZECD73 Series

| Part Number | Inductance (uH) | Test Frequency (Hz) | DCR (Ω)max | IDC (A)max |
|-------------|-----------------|---------------------|---------------------|------------|
| ZECD73-470M | 47±20% | 1K/0.25V | 0.25 | 0.68 |
| ZECD73-560M | 56±20% | 1K/0.25V | 0.28 | 0.64 |
| ZECD73-680M | 68±20% | 1K/0.25V | 0.33 | 0.59 |
| ZECD73-820M | 82±20% | 1K/0.25V | 0.41 | 0.54 |
| ZECD73-101M | 100±20% | 1K/0.25V | 0.48 | 0.51 |
| ZECD73-121M | 120±20% | 1K/0.25V | 0.54 | 0.49 |

■ZECD75 Series

| Part Number | Inductance (uH) | Test Frequency (Hz) | DCR (Ω)max | IDC (A)max |
|-------------|-----------------|---------------------|---------------------|------------|
| ZECD75-1R0M | 1.0±20% | 100K/0.25V | 0.013 | 7.5 |
| ZECD75-1R5M | 1.5±20% | 100K/0.25V | 0.023 | 5.3 |
| ZECD75-2R2M | 2.2±20% | 100K/0.25V | 0.028 | 4.5 |
| ZECD75-3R3M | 3.3±20% | 100K/0.25V | 0.045 | 4.4 |
| ZECD75-4R7M | 4.7±20% | 100K/0.25V | 0.058 | 4.2 |
| ZECD75-6R8M | 6.8±20% | 100K/0.25V | 0.07 | 3.0 |
| ZECD75-100M | 10±20% | 1K/0.25V | 0.07 | 2.5 |
| ZECD75-120M | 12±20% | 1K/0.25V | 0.08 | 2.0 |
| ZECD75-150M | 15±20% | 1K/0.25V | 0.09 | 1.9 |
| ZECD75-180M | 18±20% | 1K/0.25V | 0.10 | 1.6 |
| ZECD75-220M | 22±20% | 1K/0.25V | 0.11 | 1.6 |
| ZECD75-270M | 27±20% | 1K/0.25V | 0.12 | 1.4 |
| ZECD75-330M | 33±20% | 1K/0.25V | 0.13 | 1.3 |
| ZECD75-390M | 39±20% | 1K/0.25V | 0.16 | 1.2 |
| ZECD75-470M | 47±20% | 1K/0.25V | 0.18 | 1.2 |
| ZECD75-560K | 56±10% | 1K/0.25V | 0.24 | 0.95 |
| ZECD75-680K | 68±10% | 1K/0.25V | 0.28 | 0.88 |
| ZECD75-820K | 82±10% | 1K/0.25V | 0.37 | 0.80 |
| ZECD75-101K | 100±10% | 1K/0.25V | 0.43 | 0.75 |
| ZECD75-121K | 120±10% | 1K/0.25V | 0.47 | 0.66 |
| ZECD75-151K | 150±10% | 1K/0.25V | 0.64 | 0.60 |
| ZECD75-181K | 180±10% | 1K/0.25V | 0.71 | 0.53 |
| ZECD75-221K | 220±10% | 1K/0.25V | 0.96 | 0.50 |
| ZECD75-271K | 270±10% | 1K/0.25V | 1.11 | 0.42 |
| ZECD75-331K | 330±10% | 1K/0.25V | 1.26 | 0.41 |
| ZECD75-391K | 390±10% | 1K/0.25V | 1.77 | 0.38 |
| ZECD75-471K | 470±10% | 1K/0.25V | 1.96 | 0.36 |
| ZECD75-561K | 560±10% | 1K/0.25V | 2.9 | 0.33 |

■ZECD104 Series

| Part Number | Inductance (uH) | Test Frequency (Hz) | DCR (Ω)max | IDC (A)max |
|--------------|-----------------|---------------------|---------------------|------------|
| ZECD104-1R0M | 1.0±20% | 100K/0.25V | 0.012 | 8.70 |
| ZECD104-1R5M | 1.5±20% | 100K/0.25V | 0.020 | 5.40 |
| ZECD104-2R2M | 2.2±20% | 100K/0.25V | 0.028 | 2.85 |
| ZECD104-3R3M | 3.3±20% | 100K/0.25V | 0.038 | 2.75 |
| ZECD104-4R7M | 4.7±20% | 100K/0.25V | 0.040 | 2.70 |
| ZECD104-6R8M | 6.8±20% | 100K/0.25V | 0.042 | 2.65 |
| ZECD104-100M | 10±20% | 1K/0.25V | 0.048 | 2.60 |
| ZECD104-120M | 12±20% | 1K/0.25V | 0.05 | 2.38 |
| ZECD104-150M | 15±20% | 1K/0.25V | 0.07 | 1.87 |
| ZECD104-180M | 18±20% | 1K/0.25V | 0.08 | 1.73 |
| ZECD104-220M | 22±20% | 1K/0.25V | 0.09 | 1.60 |
| ZECD104-270M | 27±20% | 1K/0.25V | 0.10 | 1.44 |
| ZECD104-330M | 33±20% | 1K/0.25V | 0.12 | 1.26 |
| ZECD104-390M | 39±20% | 1K/0.25V | 0.15 | 1.20 |
| ZECD104-470M | 47±20% | 1K/0.25V | 0.17 | 1.10 |
| ZECD104-560M | 56±20% | 1K/0.25V | 0.20 | 1.01 |
| ZECD104-680M | 68±20% | 1K/0.25V | 0.22 | 0.91 |
| ZECD104-820M | 82±20% | 1K/0.25V | 0.25 | 0.85 |
| ZECD104-101M | 100±20% | 1K/0.25V | 0.34 | 0.74 |
| ZECD104-121M | 120±20% | 1K/0.25V | 0.40 | 0.69 |
| ZECD104-151M | 150±20% | 1K/0.25V | 0.54 | 0.61 |
| ZECD104-181M | 180±20% | 1K/0.25V | 0.62 | 0.56 |
| ZECD104-221M | 220±20% | 1K/0.25V | 0.72 | 0.53 |
| ZECD104-271M | 270±20% | 1K/0.25V | 0.95 | 0.45 |
| ZECD104-331M | 330±20% | 1K/0.25V | 1.10 | 0.42 |
| ZECD104-391M | 390±20% | 1K/0.25V | 1.24 | 0.38 |
| ZECD104-471M | 470±20% | 1K/0.25V | 1.53 | 0.35 |
| ZECD104-561M | 560±20% | 1K/0.25V | 1.90 | 0.32 |

■ZECD105 Series

| Part Number | Inductance (uH) | Test Frequency (Hz) | DCR (Ω)max | IDC (A)max |
|--------------|-----------------|---------------------|---------------------|------------|
| ZECD105-1R0M | 1.0±20% | 100K/0.25V | 0.009 | 8.63 |
| ZECD105-2R2M | 2.2±20% | 100K/0.25V | 0.016 | 7.20 |
| ZECD105-3R3M | 3.3±20% | 100K/0.25V | 0.018 | 6.50 |
| ZECD105-4R7M | 4.7±20% | 100K/0.25V | 0.02 | 5.50 |
| ZECD105-6R8M | 6.8±20% | 100K/0.25V | 0.04 | 4.50 |
| ZECD105-100M | 10±20% | 1K/0.25V | 0.06 | 2.60 |
| ZECD105-150M | 15±20% | 1K/0.25V | 0.07 | 2.30 |
| ZECD105-180M | 18±20% | 1K/0.25V | 0.08 | 2.20 |
| ZECD105-220M | 22±20% | 1K/0.25V | 0.09 | 2.00 |

■ZECD105 Series

| Part Number | Inductance (uH) | Test Frequency (Hz) | DCR (Ω)max | IDC (A)max |
|--------------|-----------------|---------------------|---------------------|------------|
| ZECD105-270M | 27±20% | 1K/0.25V | 0.10 | 1.80 |
| ZECD105-330M | 33±20% | 1K/0.25V | 0.11 | 1.50 |
| ZECD105-390M | 39±20% | 1K/0.25V | 0.12 | 1.40 |
| ZECD105-470M | 47±20% | 1K/0.25V | 0.14 | 1.30 |
| ZECD105-560K | 56±10% | 1K/0.25V | 0.19 | 1.20 |
| ZECD105-680K | 68±10% | 1K/0.25V | 0.21 | 1.20 |
| ZECD105-820K | 82±10% | 1K/0.25V | 0.28 | 1.00 |
| ZECD105-101K | 100±10% | 1K/0.25V | 0.34 | 1.00 |
| ZECD105-121K | 120±10% | 1K/0.25V | 0.37 | 0.90 |
| ZECD105-151K | 150±10% | 1K/0.25V | 0.51 | 0.80 |
| ZECD105-181K | 180±10% | 1K/0.25V | 0.57 | 0.50 |
| ZECD105-221K | 220±10% | 1K/0.25V | 0.78 | 0.66 |
| ZECD105-271K | 270±10% | 1K/0.25V | 0.87 | 0.41 |
| ZECD105-331K | 330±10% | 1K/0.25V | 1.20 | 0.55 |
| ZECD105-471K | 470±10% | 1K/0.25V | 1.50 | 0.45 |
| ZECD105-561K | 560±10% | 1K/0.25V | 1.90 | 0.30 |
| ZECD105-681K | 680±10% | 1K/0.25V | 2.25 | 0.28 |
| ZECD105-821K | 820±10% | 1K/0.25V | 2.55 | 0.24 |

- * The maximum rated current is a DC current which causes initial inductance to decrease by 25% or temperature to rise by 40°C, whichever is smaller (at ambient reference temperature: 20 °C).
- * Operating Temperature: -40°C to +125°C.