

零件承认书

SPECIFICATION FOR APPROVAL

客户名称: 0001

规格描述: ZECD功率电感系列规格书

日期: 2024/08/10

增益签核:

制订	审核	核准
夏琳	陈雨	李万

客户签核:

工程	审核	核准



东莞市增益实业有限公司

地址: 东莞市塘厦镇林村塘厦大道北552号

电话: 0769-87321000

传真: 0769-87891229

物料类型:

功率电感

日期:

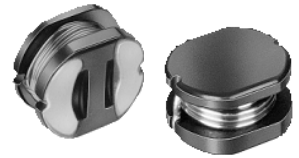
2024/08/10

版本:

A



ZECD Power Inductors 功率电感系列



■ Features

- 1.Excellent solderability and high heat resistance.
- 2.Excellent terminal strength construction.
- 3.Packed in embossed carrier tape and can be used by automatic mounting machine.

● 特征

- 1.絕佳的焊錫性及高溫耐熱性。
- 2.絕佳的端面強度結構。
- 3.捲軸包裝，可用於自動插件機器。

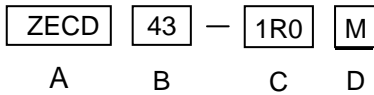
■ Applications

Power supply for VCR,OA equipment ,LCD television set, notebook, DC to DC converters, DC to AC inverters etc.

● 用途

VCR、辦公室自動設備、液晶電視機、筆記型電腦、直流-直流整流器、直流-交流換流器等的電源供應器。

■ Feed Lree Part Numbering



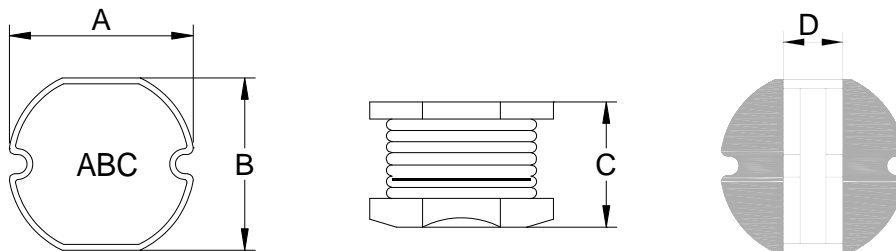
A.Series

B.Dimension A x C

C.Inductance 1R0=1.0uH,100=10uH,101=100uH

D.Inductance Tolerance K=±10%,M=±20%

■ Dimensions



Series	A	B	C	D ref
ZECD31	3.5±0.3	3.0±0.3	1.6±0.3	1.0
ZECD32	3.5±0.3	3.0±0.3	2.1±0.3	1.0
ZECD42	4.5±0.3	4.0±0.3	2.0±0.3	1.4
ZECD43	4.5±0.3	4.0±0.3	3.2±0.3	1.4
ZECD52	5.8±0.3	5.2±0.3	2.0±0.3	1.6
ZECD53	5.8±0.3	5.2±0.3	3.0±0.3	1.6
ZECD54	5.8±0.3	5.2±0.3	4.5±0.3	1.6
ZECD73	7.8±0.3	7.0±0.3	3.5±0.3	2.4
ZECD75	7.8±0.3	7.0±0.3	5.0±0.3	2.4
ZECD104	10.0±0.3	9.0±0.3	4.0±0.3	3.1
ZECD105	10.0±0.3	9.0±0.3	5.4±0.3	3.1

■ZECD32 Series

Part Number	Inductance (uH)	Test Frequency (Hz)	DCR (Ω)max	IDC (A)max
ZECD32-1R5M	1.5±20%	100K/0.25V	0.46	2.9
ZECD32-391K	390±10%	100K/0.25V	7.8	0.12

■ZECD42 Series

Part Number	Inductance (uH)	Test Frequency (Hz)	DCR (Ω)max	IDC (A)max
ZECD42-1R0M	1.0±20%	100K/0.25V	0.035	2.70
ZECD42-2R2M	2.2±20%	100K/0.25V	0.060	1.90
ZECD42-3R3M	3.3±20%	100K/0.25V	0.080	1.55
ZECD42-6R8M	6.8±20%	100K/0.25V	0.135	1.10
ZECD42-150M	15±20%	100K/0.25V	0.330	0.75
ZECD42-680M	68±20%	100K/0.25V	1.350	0.32

■ZECD43 Series

Part Number	Inductance (uH)	Test Freqency (Hz)	DCR (Ω)max	IDC (A)max
ZECD43-1R5M	1.5 \pm 20%	100K/0.25V	0.038	3.30
ZECD43-1R8M	1.8 \pm 20%	100K/0.25V	0.042	2.92
ZECD43-5R6M	5.6 \pm 20%	100K/0.25V	0.101	1.60
ZECD43-471K	470 \pm 10%	100K/0.25V	6.20	0.21
ZECD43-681K	680 \pm 10%	100K/0.25V	9.10	0.18
ZECD43-102K	1000 \pm 10%	100K/0.25V	15.0	0.14
ZECD43-152K	1500 \pm 10%	100K/0.25V	15.0	0.05
ZECD43-182K	1800 \pm 10%	100K/0.25V	16.0	0.04

■ZECD53 Series

Part Number	Inductance (uH)	Test Freqeuncy (Hz)	DCR (Ω)max	IDC (A)max
ZECD53-1R5M	1.5 \pm 20%	100K/0.25V	0.040	4.0
ZECD53-471K	470 \pm 10%	1K/0.25V	4.50	0.21
ZECD53-102K	1000 \pm 10%	1K/0.25V	4.80	0.12

■ZECD54 Series

Part Number	Inductance (uH)	Test Frequency (Hz)	DCR (Ω)max	IDC (A)max
ZECD54-5R6M	5.6 \pm 20%	100K/0.25V	0.070	2.5
ZECD54-8R2M	8.2 \pm 20%	100K/0.25V	0.090	2.0
ZECD54-331K	330 \pm 10%	1K/0.25V	1.70	0.29
ZECD54-471K	470 \pm 10%	1K/0.25V	2.30	0.29
ZECD54-561K	560 \pm 10%	1K/0.25V	2.50	0.22
ZECD54-681K	680 \pm 10%	1K/0.25V	3.0	0.20
ZECD54-821K	820 \pm 10%	1K/0.25V	4.50	0.16
ZECD54-102K	1000 \pm 10%	1K/0.25V	4.80	0.15
ZECD54-152K	1500 \pm 10%	1K/0.25V	6.10	0.11
ZECD54-222K	2200 \pm 10%	1K/0.25V	7.40	0.065
ZECD54-103K	10000 \pm 10%	1K/0.25V	65.5	0.10

■ZECD75 Series

Part Number	Inductance (uH)	Test Frefuency (Hz)	DCR (Ω)max	IDC (A)max
ZECD75-8R2M	8.2 \pm 20%	100K/0.25V	0.04	2.5
ZECD75-681K	680 \pm 10%	1K/0.25V	3.40	0.33
ZECD75-821K	820 \pm 10%	1K/0.25V	4.80	0.30
ZECD75-102K	1000 \pm 10%	1K/0.25V	5.20	0.24
ZECD75-152K	1500 \pm 10%	1K/0.25V	6.40	0.21
ZECD75-222K	2200 \pm 10%	1K/0.25V	7.85	0.18
ZECD75-332K	3300 \pm 10%	1K/0.25V	8.20	0.13
ZECD75-103K	10000 \pm 10%	1K/0.25V	32.0	0.155

■ZECD105 Series

Part Number	Inductance (uH)	Test Frequency (Hz)	DCR (Ω)max	IDC (A)max
ZECD105-102K	1000 \pm 10%	1K/0.25V	3.70	0.24
ZECD105-103K	10000 \pm 10%	1K/0.25V	24.5	0.175

- * The maximum rated current is a DC current which causes initial inductance to decrease by 25% or temperature to rise by 40°C, whichever is smaller (at ambient reference temperature: 20 °C).
- * Operating Temperature: -40°C to +125°C.