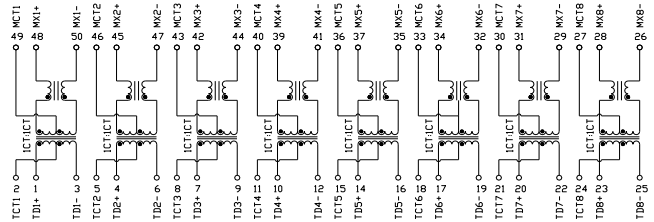
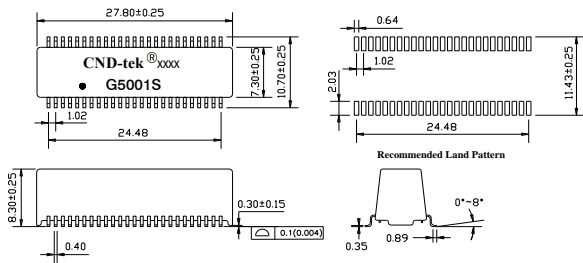


1. Designed for long haul Gigabit Ethernet 1000 Base-T, full duplex applications.
2. Supports four pairs of category 5 UTP cable.
3. Low profile Surface Mount Packaging designed for Hi-Temp Reflow Process
4. Compliant with IEEE 802.3ab standard for 1000 Base-Tesigned to support 1:1 Turns Ratio Transceivers.
5. Operating Temperature range: 0°C TO +70°C
6. Storage temperature range: -25°C TO +125°C



DIMENSIONS & SCHEMATICS

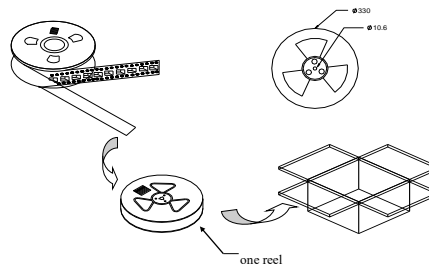
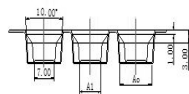
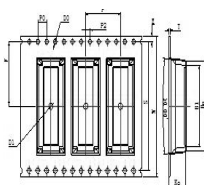


Note: 1、Dimension: mm, 2.Unless otherwise specified,tolerances are: ± 0.15mm

TECHNICAL SPECIFICATIONS

OCL :	350 μ H Min. @ 100 KHz, 100mV with 8mA DC Bias
Leakage	0.5 μ H Max. @ 100KHz, 0.1V
Inductance: Cw/w:	28pF Max. @ 100KHz, 0.1V
DCR:	1.20 Ω Max.
Turns Ratio(\pm 5%):	1CT:1CT(TX), 1CT:1CT(RX)
Polarity:	1-48, 4-45, 7-42, 10-39, 14-37, 17-34, 20-31, 23-28 In-Phase
Insertion Loss:	-1.0 dB Max. @ 1-100MHz
Return Loss:	-18 dB Min. @ 0.5-30MHz -14.4 dB Min. @ 40 MHz -13.1dB Min.@ 50MHz -12dB Min.@ 60-80MHz -10 dB Min.@ 100MHz
Cross Talk:	-45 dB Min.@ 30 MHz -40 dB Min.@ 60 MHz -35 dB Min.@ 100MHz
Common Mode Rejection :	-43 dB Min.@ 1-30 MHz -37 dB Min.@ 60 MHz -33 dB Min.@ 80-100 MHz
Isolation HI-POT:	1500Vrms 1mA 1Second

PACKING SPECIFICATION



1. units/reel:450PCS
2 reel/carton:5PCS
3.units/carton :2250PCS