

- PoE Transformer .
- Operates in condition mode with 36V-72V input.
- Switching frequency to 250KHz.
- Class B Insulation System .
- Terminations RoHS tin-silver-copper over tin over nickel over phos bronze. Other terminations available at additional cost.
- Operating Temperature -40°C to +85°C. (including coil temperature rise due to self-generated heat).
- Storage Temperature -40°C to +125°C.

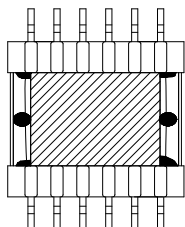
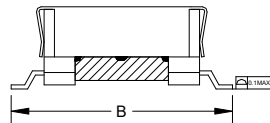
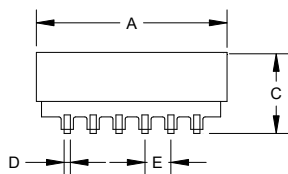
SIZE: EFD20 6+6

(LinkPower ) Part number	Inductance ±10% (μH)	Inductance IPK 2.6A (μH)	Leakage Inductance max(μH)	DCR Max(m Ohms)			Turns ratio Pri:Sec:Aux	Isolation (Vrms)60Hz/1Sec	
				Pri	Sec	Aux		Pri,Aux-Sec	Coil -core
EFD2040S-12	42	37.8 Min	0.65	61	15	195	1:0.33:0.33	1500	500

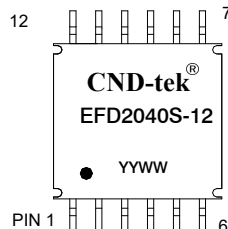
\* Packing :this mark is used generally unless specified customer.

1. All data is referenced to 25°C ambient.
2. Inductance is for primary measured at 250kHz/0A bias current/0.1 Vrms.
3. Leakage Inductance is for the primary, measured at 250KHz/0A bias current /0.1Vrms while all other windings shorted together.
4. Appearance dimensions(mm):

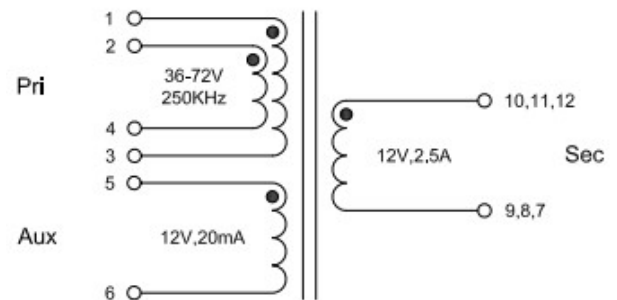
### Schematics:



BOTTOM VIEW



TOP VIEW



A	22 Max
B	30 Max
C	12.5 Max
D	0.7±0.15
E	3.0±0.3