

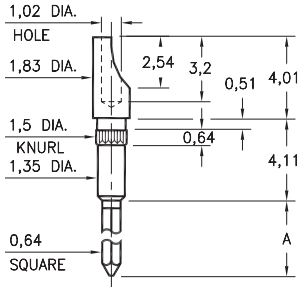
MALE PCB PINS

WRAPOST TERMINALS

8301

8301-X-24-XX-00-00-01-0

Press-fit in 1,45 mounting hole
For wire sizes up to 22 AWG

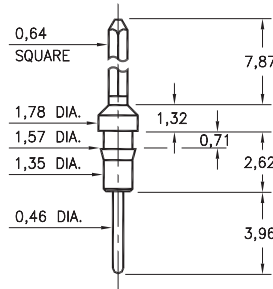


Basic Part Number	# of Wraps	Length A
8301-2	2	9,40
8301-3	3	12,95

1083

1083-0-05-XX-00-00-01-0

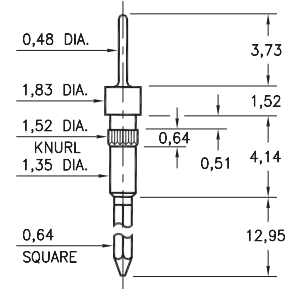
Press-fit in 1,50 mounting hole



5301

5301-0-05-XX-00-00-01-0

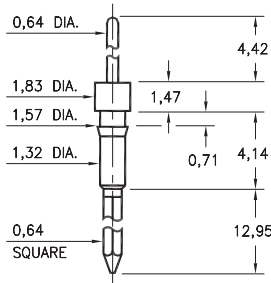
Press-fit in 1,45 mounting hole



1090

1090-0-05-XX-00-00-01-0

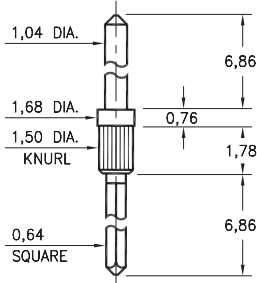
Press-fit in 1,50 mounting hole



8608

8608-0-05-XX-00-00-01-0

Press-fit in 1,42 mounting hole



SPECIFICATIONS:

Pin Material: Brass Alloy 360, 1/2 Hard
(Except where noted)

Dimensions: Millimeters

Tolerances On: Lengths: $\pm 0,13$
Diameters: $\pm 0,051$
Angles: $\pm 2^\circ$



ORDER CODE: XXXX - X - XX - XX - 00 - 00 - 01 - 0

BASIC PART # →

→ **SPECIFY PIN FINISH:**

- 01** 5,08 μ m TIN/LEAD OVER NICKEL
- ◆ **80** 5,08 μ m TIN OVER NICKEL (RoHS)
- ◆ **15** 0,25 μ m GOLD OVER NICKEL (RoHS)
- ◆ **21** 0,51 μ m GOLD OVER NICKEL (RoHS)



Mouser Electronics

Authorized Distributor

Click to View Pricing, Inventory, Delivery & Lifecycle Information:

[Mill-Max:](#)

[1083-0-05-01-00-00-01-0](#) [1083-0-05-21-00-00-01-0](#) [1090-0-05-15-00-00-01-0](#) [1090-0-05-21-00-00-01-0](#) [8608-0-05-21-00-00-01-0](#)