

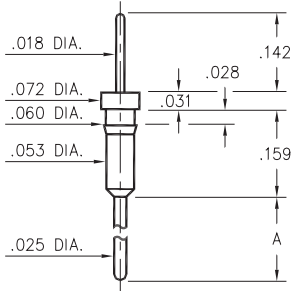
# MALE PCB PINS

## PRINTED CIRCUIT PINS

### 3409

3409-X-00-XX-00-00-03-0

Press-fit in .057 mounting hole

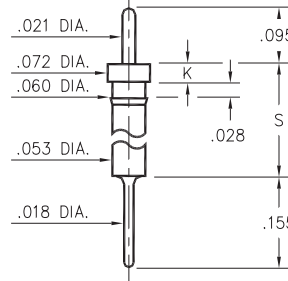


Basic Part Number	Pin Length A
3409-1	.210
3409-2	.420

### 0315

0315-0-00-XX-00-00-03-0

Press-fit in .057 mounting hole  
Pin material is Phosphor Bronze 544 (B2)

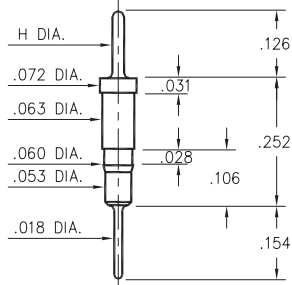


Basic Part Number	Head Height K	Standoff Height S
0315-0	.030	.190
0315-1	.040	.430

### 5503/5509

550X-X-00-XX-00-00-03-0

Press-fit in .057 mounting hole

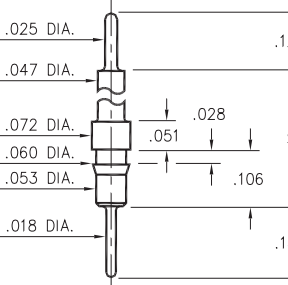


Basic Part Number	Pin Diameter H
5503-0	.025
5509-0	.018

### 5504/5505

550X-0-00-XX-00-00-03-0

Press-fit in .057 mounting hole

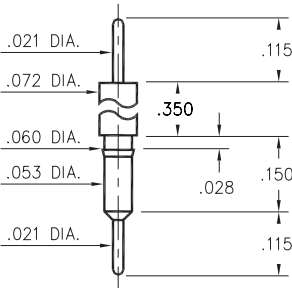


Basic Part Number	Standoff Height S
5504-0	.331
5505-0	.606

### 3406

3406-0-00-XX-00-00-03-0

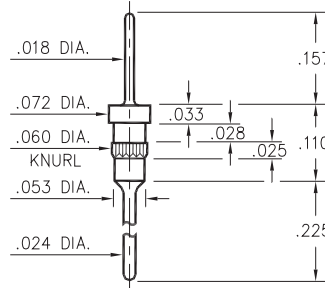
Press-fit in .057 mounting hole



### 5011

5011-0-00-XX-00-00-03-0

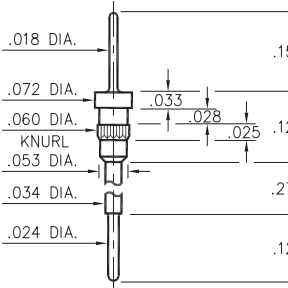
Press-fit in .057 mounting hole



### 5113

5113-0-00-XX-00-00-03-0

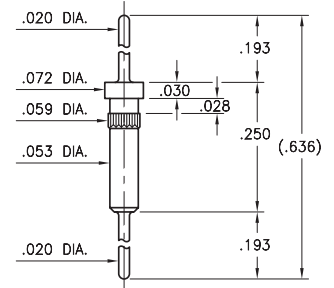
Press-fit in .057 mounting hole



### 3900

3900-0-00-15-00-00-03-0

Press-fit in .057 mounting hole



#### SPECIFICATIONS:

**Pin Material:** Brass Alloy 360, 1/2 Hard  
(Except where noted)

**Dimensions:** Inches

**Tolerances On:** Lengths: ±.005  
Diameters: ±.002  
Angles: ±2°



ORDER CODE: XXXX - X - 00 - XX - 00 - 00 - 03 - 0

BASIC PART #

SPECIFY PIN FINISH:

- 01 200 μ" TIN/LEAD OVER NICKEL
- ◆ 80 200 μ" TIN OVER NICKEL (RoHS)
- ◆ 15 10 μ" GOLD OVER NICKEL (RoHS)
- ◆ 21 20 μ" GOLD OVER NICKEL (RoHS)
- ◆ 34 50 μ" GOLD OVER NICKEL (RoHS)



# Mouser Electronics

Authorized Distributor

Click to View Pricing, Inventory, Delivery & Lifecycle Information:

## Mill-Max:

[5509-0-00-01-00-00-03-0](#) [3409-1-00-01-00-00-03-0](#) [3406-0-00-01-00-00-03-0](#) [0315-0-00-80-00-00-03-0](#) [0315-1-00-01-00-00-03-0](#) [3409-2-00-80-00-00-03-0](#) [3406-0-00-80-00-00-03-0](#) [0315-0-00-21-00-00-03-0](#) [0315-1-00-15-00-00-03-0](#) [0315-1-00-34-00-00-03-0](#) [3406-0-00-15-00-00-03-0](#) [3406-0-00-21-00-00-03-0](#) [3406-0-00-34-00-00-03-0](#) [3409-1-00-21-00-00-03-0](#) [3409-1-00-34-00-00-03-0](#) [3409-2-00-21-00-00-03-0](#) [3409-2-00-34-00-00-03-0](#) [5113-0-00-21-00-00-03-0](#) [5509-0-00-34-00-00-03-0](#) [5505-0-00-01-00-00-03-0](#) [5504-0-00-34-00-00-03-0](#) [5505-0-00-34-00-00-03-0](#) [5505-0-00-80-00-00-03-0](#) [5504-0-00-80-00-00-03-0](#) [5504-0-00-01-00-00-03-0](#) [5505-0-00-21-00-00-03-0](#) [5504-0-00-21-00-00-03-0](#)