

Han 1A-CP-Lever/Latch-female insert-V1

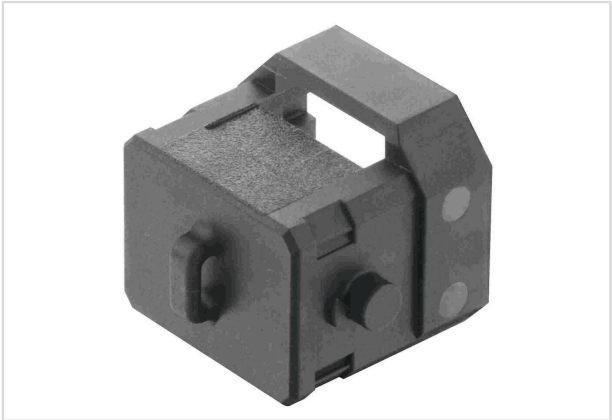


Image is for illustration purposes only. Please refer to product description.

Part number	09 10 000 5501
Specification	Han 1A-CP-Lever/Latch-female insert-V1
HARTING eCatalogue	https://b2b.harting.com/09100005501

Identification

Category	Accessories
Series	Han® 1A
Type of accessory	Protection cover
Description of the accessory	for female inserts
	09 10 003 330X
	09 10 003 310X
	09 10 005 310X

Technical characteristics

Limiting temperature	-30 ... +90 °C
Degree of protection acc. to IEC 60529	IP65

Material properties

Material (cover)	Polyamide (PA)
Colour (accessories)	RAL 9005 (jet black)
Material flammability class acc. to UL 94	V-0
RoHS	compliant
ELV status	compliant
China RoHS	e
REACH Annex XVII substances	Not contained
REACH ANNEX XIV substances	Not contained
REACH SVHC substances	Not contained



Pushing Performance
Since 1945

Commercial data

Packaging size	10
Net weight	3.96 g
Country of origin	Romania
European customs tariff number	85389099
GTIN	5713140191853
ETIM	EC002314
eCl@ss	27440208 Cap for industrial connectors