

DO NOT  
SCALE FROM  
THIS PRINT

QFS-XXX-XX-XX-D-RA-XXX-XX

No OF POSITIONS  
-026, -052, -078, -104  
(PER ROW)

LEAD STYLE  
-01: .062[1.57]  
-02: .093[2.36]

PACKAGING OPTION  
-TR: TAPE & REEL PACKAGING  
(-026 & -052 WITH NO OPTIONS)  
(-026 & -052 WITH -PC4)  
(-026 WITH -PC8)

OPTION  
-K: KAPTON PAD  
(USE K-DOT-.310-.406-.005)  
-PC4: 4 POWER PINS  
(SEE FIG 2, SHEET 5)  
(NOT AVAILABLE WITH -104 POS)  
-PC8: 8 POWER PINS  
(SEE FIG 3, SHEET 5)  
(NOT AVAILABLE WITH -104 POS)

-RA: RIGHT ANGLE

ROW SPECIFICATION

-D: DOUBLE (USE QFS-26-01-D-XX-RA)

PLATING SPECIFICATION

(SEE TABLE 6, SHEET 4)

-SL: 10μ" GOLD IN CONTACT AREA, MATTE TIN TAIL  
-S: 30μ" GOLD IN CONTACT AREA, MATTE TIN TAIL  
-L: 10μ" GOLD IN CONTACT AREA, 3μ" GOLD ON TAIL  
-H: 30μ" GOLD IN CONTACT AREA, 3μ" GOLD ON TAIL

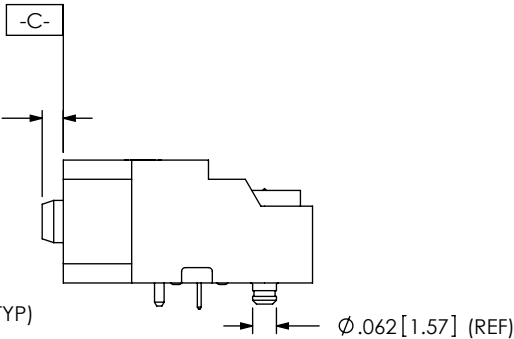
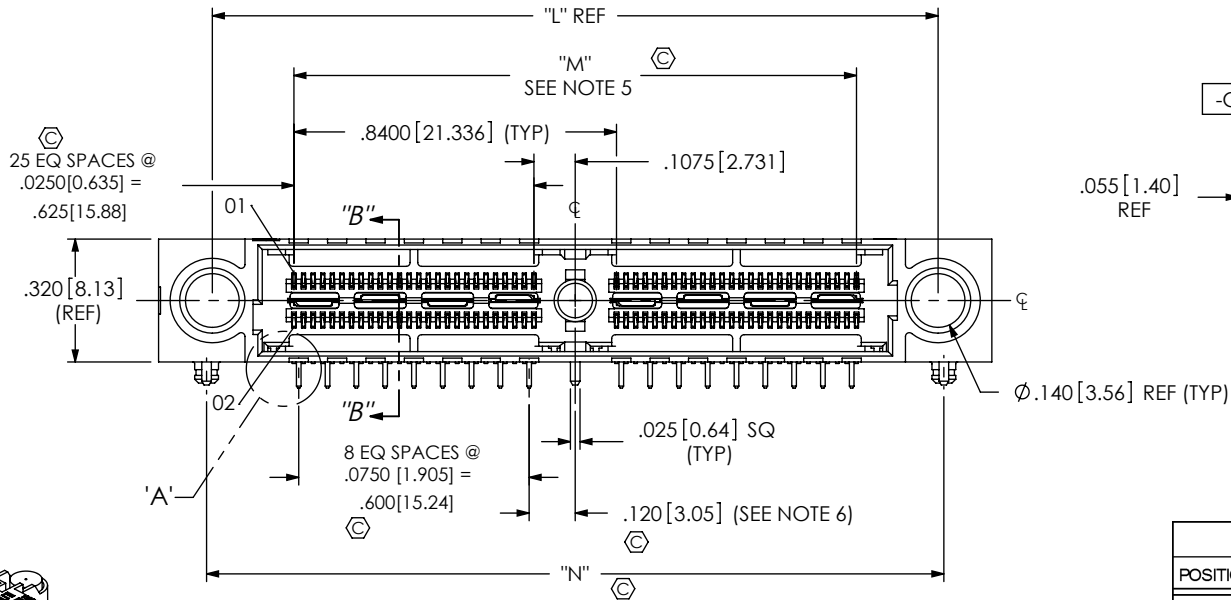
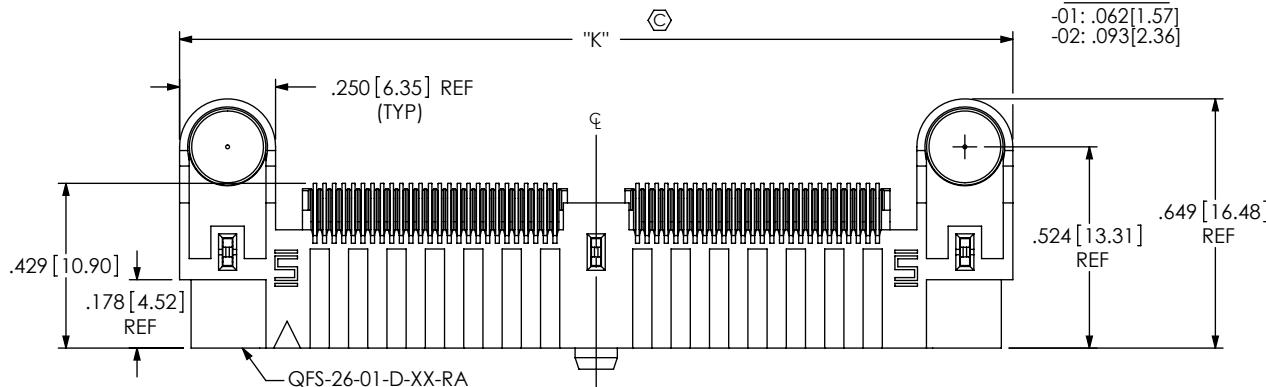


FIG 1  
(QFS-052-01-XX-D-RA SHOWN)

TABLE 5				
POSITION	"K"	"L"	"M"	"N"
-026	1.330 [33.78]	1.050 [26.67]	.625 [15.88]	1.080 [27.43]
-052	2.170 [55.12]	1.890 [48.01]	1.465 [37.21]	1.920 [48.77]
-078	3.010 [76.45]	2.730 [69.34]	2.305 [58.55]	2.760 [70.10]
-104	3.850 [97.79]	3.570 [90.68]	3.145 [79.88]	3.600 [91.44]

UNLESS OTHERWISE SPECIFIED,  
DIMENSIONS ARE IN INCHES.

TOLERANCES ARE:

DECIMALS ANGLES  
.XX: ±.01 [.3] 2°  
.XXX: ±.005 [.13]  
.XXXX: ±.0020 [.051]

PROPRIETARY NOTE

THIS DOCUMENT CONTAINS INFORMATION  
CONFIDENTIAL AND PROPRIETARY TO  
SAMTEC, INC. AND SHALL NOT BE REPRODUCED  
OR TRANSFERRED TO OTHER DOCUMENTS OR  
DISCLOSED TO OTHERS OR USED FOR ANY  
PURPOSE OTHER THAN THAT WHICH IT WAS  
OBTAINED WITHOUT THE EXPRESSED WRITTEN  
CONSENT OF SAMTEC, INC.

**samtec**

520 PARK EAST BLVD, NEW ALBANY, IN 47150  
PHONE: 812-944-6733 FAX: 812-948-5047  
e-Mail: info@SAMTEC.com code 55322

MATERIAL: DO NOT SCALE DRAWING SHEET SCALE: 2:1  
INSULATOR: LCP, COLOR BLACK  
CONTACT, POWER PIN & GROUND PLANE: PHOS BRONZE  
COUNTERWEIGHT: BRASS

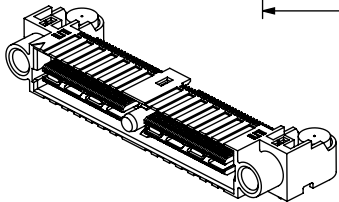
DESCRIPTION:  
.635mm DUAL ROW RIGHT ANGLE SOCKET ASSEMBLY

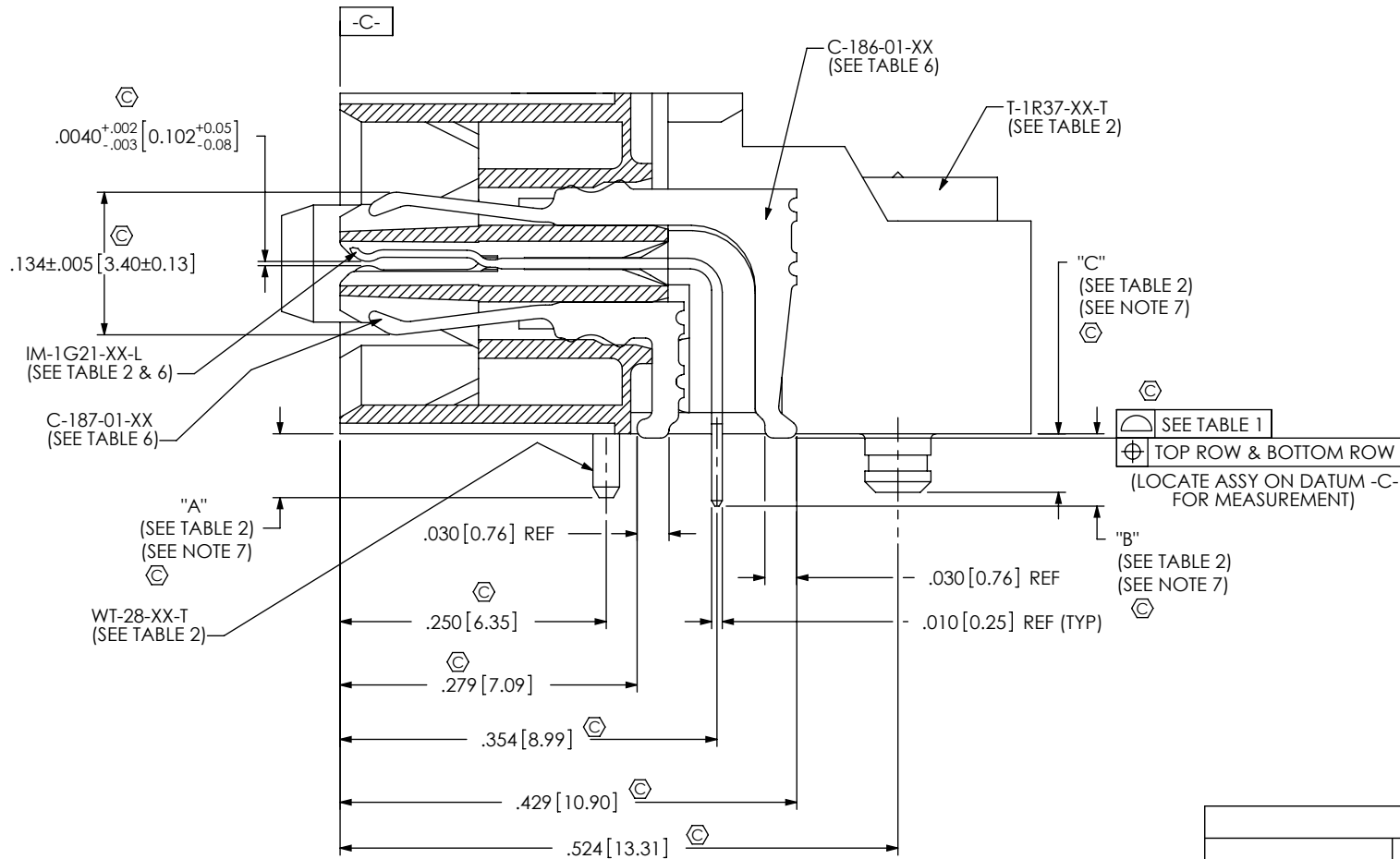
DWG. NO.  
QFS-XXX-XX-XX-D-RA-XXX-XX

BY: CLAY W 8/25/2006 SHEET 1 OF 6

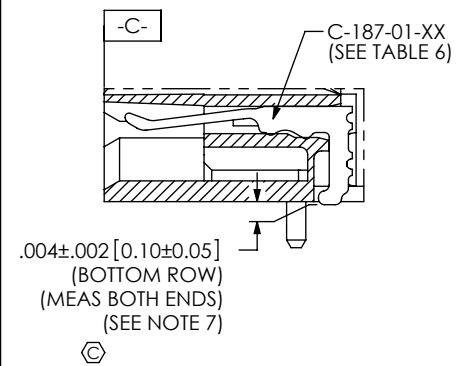
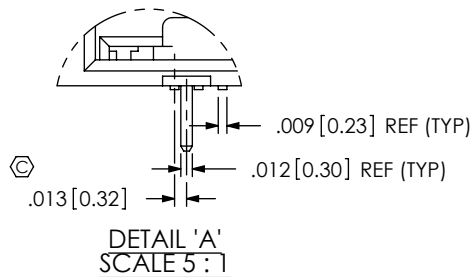
NOTES:

1. ⌘ REPRESENTS A CRITICAL DIMENSION.
2. MAXIMUM BURR ALLOWANCE: .0010[0.02].
3. MINIMUM PUSHOUT FORCE: SIGNAL: .5 LB [2.22 N],  
SHIELD/GROUND, POWER PIN AND COUNTERWEIGHT: 1 LB [4.45 N].
4. PARTS TO BE PACKAGED IN TRAYS AS STANDARD.
5. PLUS .007" ALLOWED ON 4 BANK.
6. DOES NOT APPLY TO 1 BANK.
7. USE -Z- DATUM ZONE FOR ONLY MEASUREMENTS.

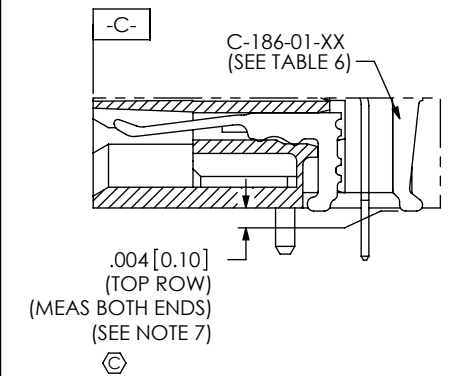




SECTION "B"-"B"  
SCALE 6:1



BOTTOM ROW - TAIL DETAIL  
(LOCATE ASSEMBLY ON DATUM -C- FOR MEASUREMENT)



TOP ROW - TAIL DETAIL  
(LOCATE ASSEMBLY ON DATUM -C- FOR MEASUREMENT)

TABLE 1

No OF POSITIONS	COPLANARITY	STRAIGHTNESS ROW 1	STRAIGHTNESS ROW 2
-026 THRU -052	.004[.10]	.004[.10]	.004[.10]
-078 THRU -104	.006[.15]	.006[.15]	.006[.15]

TABLE 2

LEAD STYLE	"A"	"B"	"C"	WT-28-XX-T	IM-1G21-XX-L	T-1R37-XX-T
-01	.060[1.52]	.068[1.73]	.055[1.40]	WT-28-01-T	IM-1G21-01-L	T-1R37-01-T
-02	.091[2.31]	.099[2.51]	.086[2.18]	WT-28-02-T	IM-1G21-02-L	T-1R37-02-T

PROPRIETARY NOTE  
 THIS DOCUMENT CONTAINS INFORMATION  
 CONFIDENTIAL AND PROPRIETARY TO  
 SAMTEC, INC. AND SHALL NOT BE REPRODUCED  
 OR TRANSFERRED TO OTHER DOCUMENTS OR  
 DISCLOSED TO OTHERS OR USED FOR ANY  
 PURPOSE OTHER THAN THAT WHICH IT WAS  
 OBTAINED WITHOUT THE EXPRESSED WRITTEN  
 CONSENT OF SAMTEC, INC.

DO NOT SCALE DRAWING

SHEET SCALE: 6:1

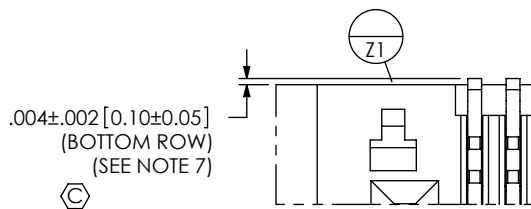
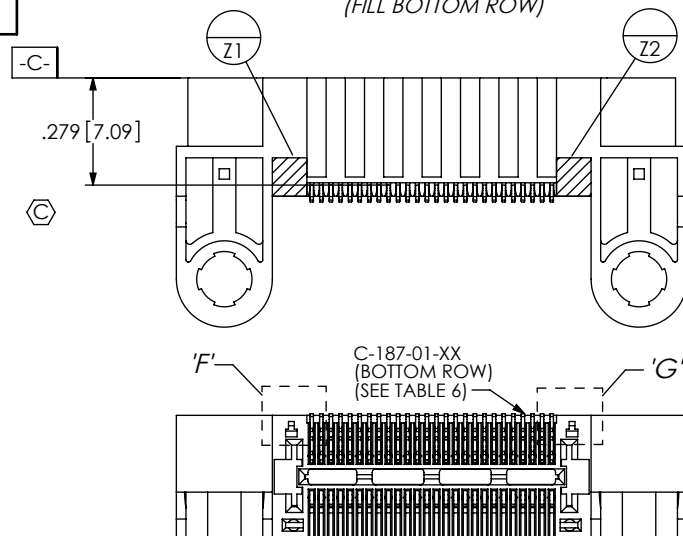
**samtec**  
 520 PARK EAST BLVD, NEW ALBANY, IN 47150  
 PHONE: 812-944-6733 FAX: 812-948-5047  
 e-Mail: info@SAMTEC.com code 55322

DESCRIPTION:  
 .635mm DUAL ROW RIGHT ANGLE SOCKET ASSEMBLY  
 DWG. NO.

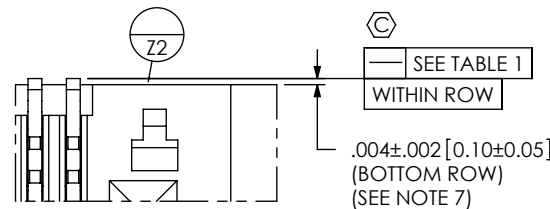
QFS-XXX-XX-XX-D-RA-XXX-XX  
 BY: CLAY W 8/25/2006 SHEET 2 OF 6

REVISION X

**INSPECTION VIEW 1**  
(FILL BOTTOM ROW)

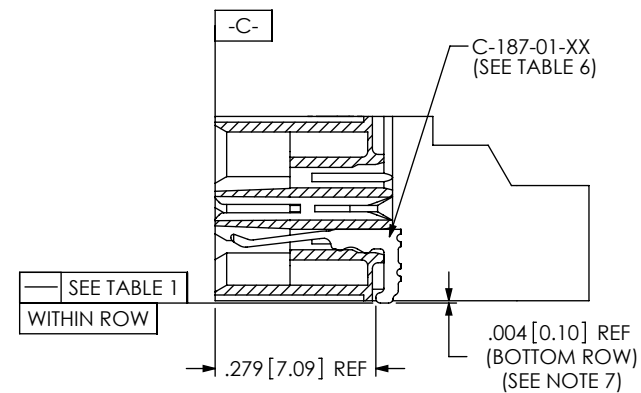
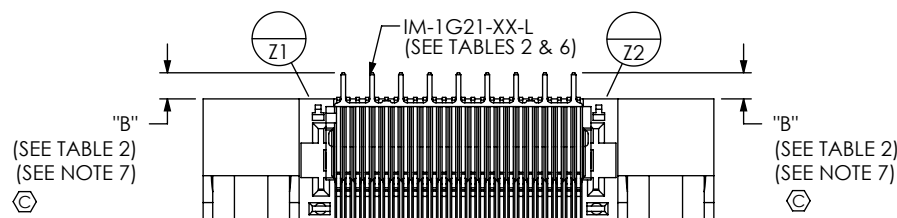
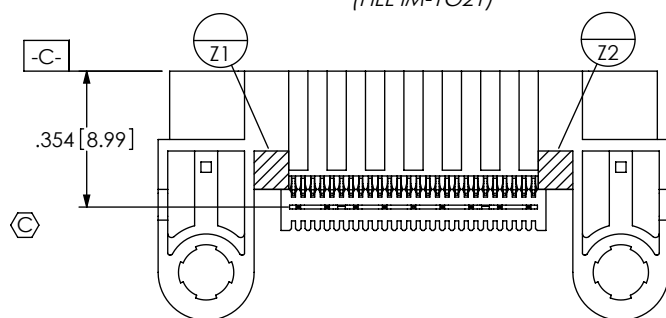


**DETAIL 'F'**  
SCALE 8 : 1

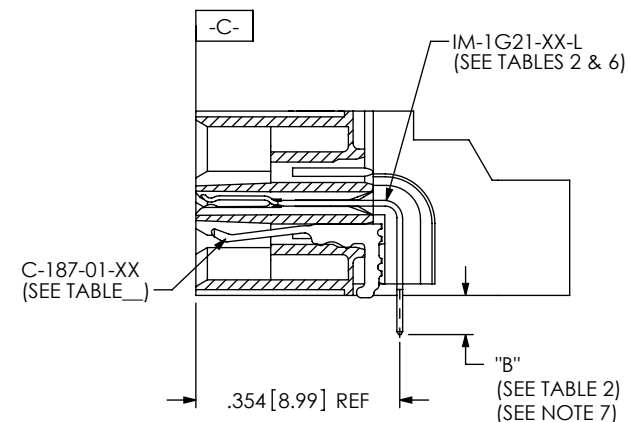


**DETAIL 'G'**  
SCALE 8 : 1

**INSPECTION VIEW 2**  
(FILL IM-TG21)



**IN-PROCESS 1**  
(FILL BOTTOM ROW)  
(SEE INSPECTION VIEW 1 FOR ORIENTATION AND CPC'S)



**IN-PROCESS 2**  
(FILL IM-TG21)  
(SEE INSPECTION VIEW 2 FOR ORIENTATION AND CPC'S)

**PROPRIETARY NOTE**

THIS DOCUMENT CONTAINS INFORMATION  
CONFIDENTIAL AND PROPRIETARY TO  
SAMTEC, INC. AND SHALL NOT BE REPRODUCED  
OR TRANSFERRED TO OTHER DOCUMENTS OR  
DISCLOSED TO OTHERS OR USED FOR ANY  
PURPOSE OTHER THAN THAT WHICH IT WAS  
OBTAINED WITHOUT THE EXPRESSED WRITTEN  
CONSENT OF SAMTEC, INC.

DO NOT SCALE DRAWING

SHEET SCALE: 2:1

**samtec**

520 PARK EAST BLVD, NEW ALBANY, IN 47150  
PHONE: 812-944-6733 FAX: 812-948-5047  
e-Mail info@SAMTEC.com code 55322

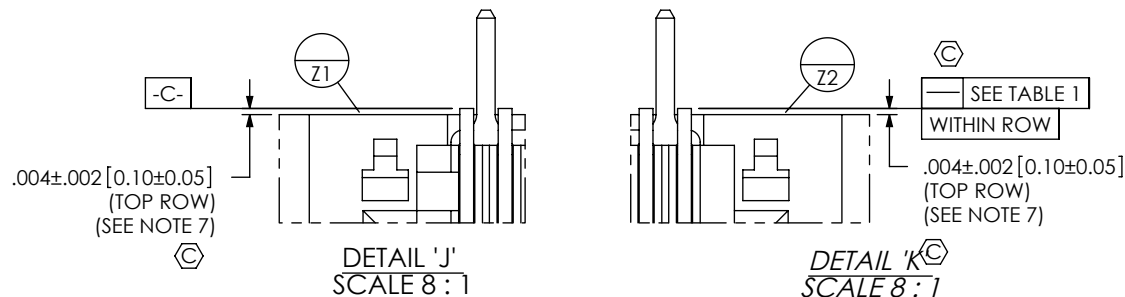
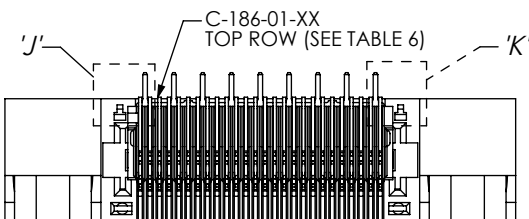
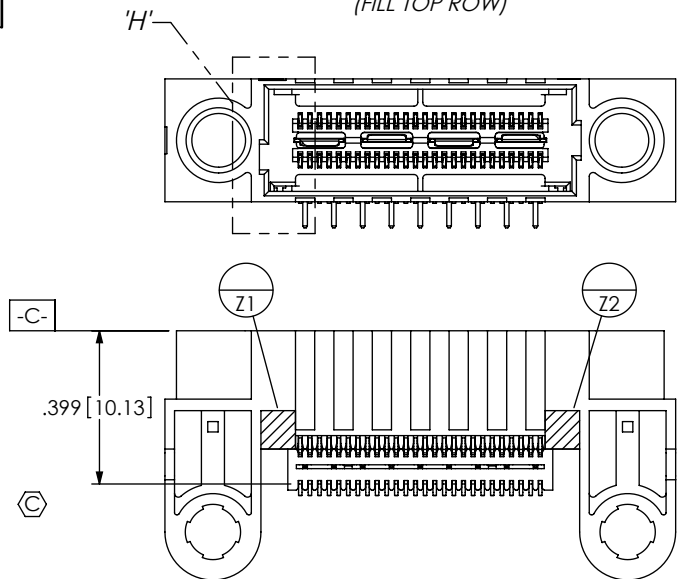
DESCRIPTION:  
.635mm DUAL ROW RIGHT ANGLE SOCKET ASSEMBLY

DWG. NO.  
**QFS-XXX-XX-XX-D-RA-XXX-XX**

BY: CLAY W 8/25/2006 SHEET 3 OF 6

REVISION X

**INSPECTION VIEW 3**  
(FILL TOP ROW)

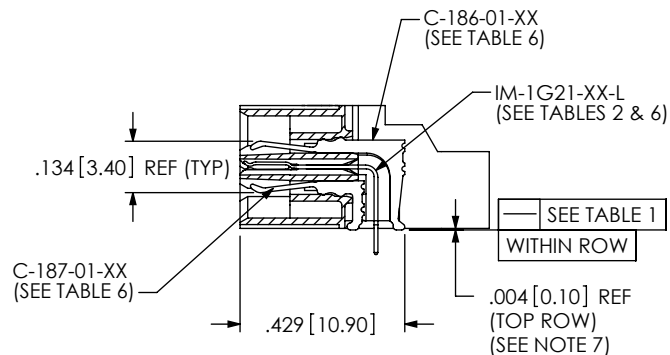


DETAIL 'J'  
SCALE 8 : 1

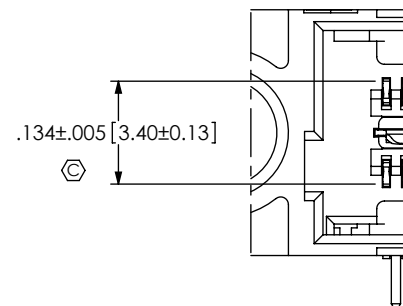
DETAIL 'K'  
SCALE 8 : 1

TABLE 6: PLATING SPECIFICATIONS

	CONTACT	CONTACT	GROUND PLANE	PCX CONTACTS
-SL	C-186-01-SL: 10μ" GOLD CONTACT, MATTE TIN TAIL	C-187-01-SL: 10μ" GOLD CONTACT, MATTE TIN TAIL	IM-1G21-XX-L: 10μ" GOLD CONTACT, MATTE TIN TAIL	C-79-XX-L: 10μ" GOLD CONTACT, MATTE TIN TAIL
-S	C-186-01-S: 30μ" GOLD CONTACT, MATTE TIN TAIL	C-187-01-S: 30μ" GOLD CONTACT, MATTE TIN TAIL	IM-1G21-XX-L: 10μ" GOLD CONTACT, MATTE TIN TAIL	C-79-XX-S: 30μ" GOLD CONTACT, MATTE TIN TAIL
-L	C-186-01-L: 10μ" GOLD CONTACT, 3μ" GOLD TAIL	C-187-01-L: 10μ" GOLD CONTACT, 3μ" GOLD TAIL	IM-1G21-XX-L: 10μ" GOLD CONTACT, MATTE TIN TAIL	C-79-XX-L: 10μ" GOLD CONTACT, MATTE TIN TAIL
-H	C-186-01-H: 30μ" GOLD CONTACT, 3μ" GOLD TAIL	C-187-01-H: 30μ" GOLD CONTACT, 3μ" GOLD TAIL	IM-1G21-XX-L: 10μ" GOLD CONTACT, MATTE TIN TAIL	C-79-XX-H: 50μ" GOLD CONTACT, 3μ" LIGHT GOLD TAIL



**IN-PROCESS 3**  
(FILL TOP ROW)  
(SEE INSPECTION VIEW 3 FOR ORIENTATION AND CPC'S)



DETAIL 'H'  
SCALE 4 : 1

PROPRIETARY NOTE

THIS DOCUMENT CONTAINS INFORMATION CONFIDENTIAL AND PROPRIETARY TO SAMTEC, INC. AND SHALL NOT BE REPRODUCED OR TRANSFERRED TO OTHER DOCUMENTS OR DISCLOSED TO OTHERS OR USED FOR ANY PURPOSE OTHER THAN THAT WHICH IT WAS OBTAINED WITHOUT THE EXPRESSED WRITTEN CONSENT OF SAMTEC, INC.

DO NOT SCALE DRAWING

SHEET SCALE: 1:1

**samtec**

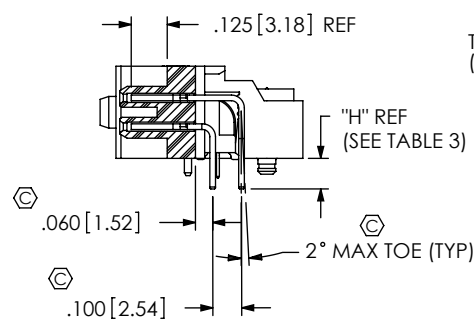
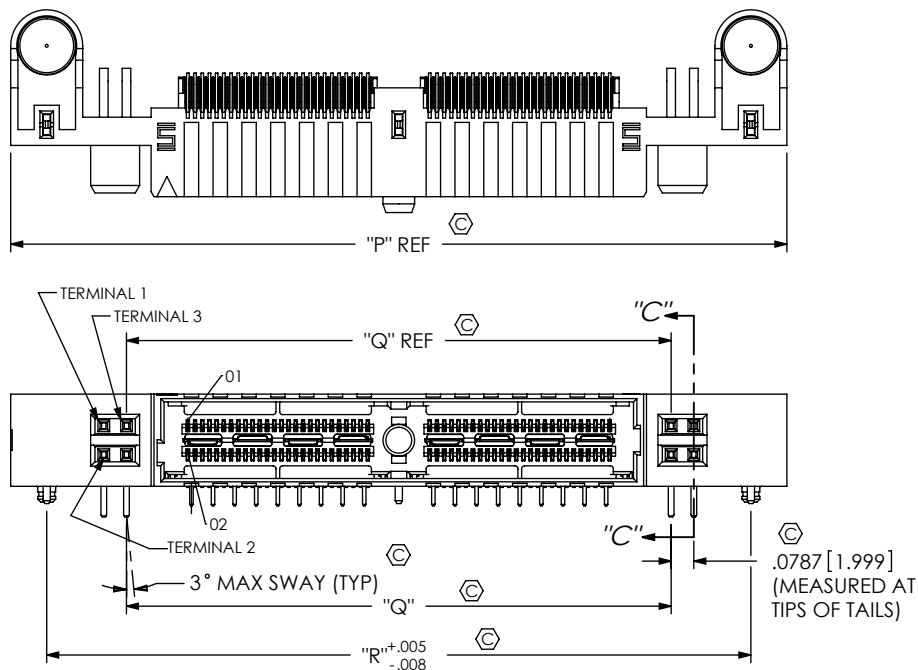
520 PARK EAST BLVD, NEW ALBANY, IN 47150  
PHONE: 812-944-6733 FAX: 812-948-5047  
e-Mail info@SAMTEC.com code 55322

DESCRIPTION:  
.635mm DUAL ROW RIGHT ANGLE SOCKET ASSEMBLY

DWG. NO.  
**QFS-XXX-XX-XX-D-RA-XXX-XX**

BY: CLAY W 8/25/2006 SHEET 4 OF 6

FIG 2  
(QFS-052-01-XX-D-RA-PC4 SHOWN)  
(SAME AS FIG 1, DIFFERENT AS SHOWN)



SECTION "C"-"C"  
SCALE 1.5:1

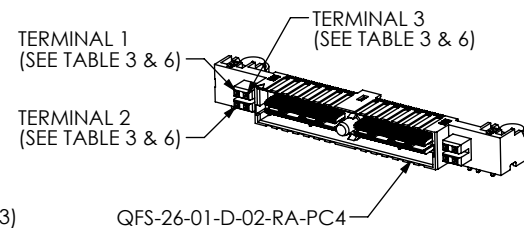
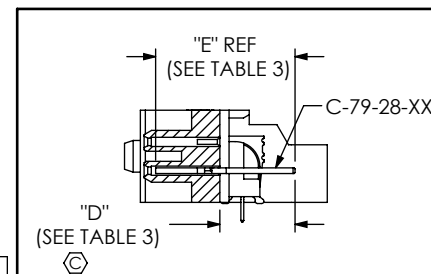
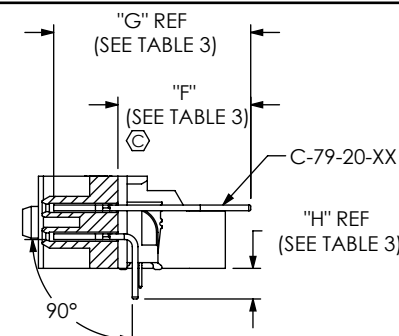


TABLE 3							
LEAD STYLE	TERMINAL 1	TERMINAL 2	"D"	"E"	"F"	"G"	"H"
-01	C-79-28-XX	C-79-29-XX	.261 [6.63]	.484 [12.29]	.461 [11.71]	.684 [17.37]	.106 [2.69]
-02	C-79-20-XX	C-79-20A-XX	.287 [7.29]	.510 [12.95]	.487 [12.37]	.710 [18.03]	.132 [3.35]



IN-PROCESS 4



IN-PROCESS 5

FIG 3  
(QFS-052-01-XX-D-RA-PC8 SHOWN)  
(SAME AS FIG 2, DIFFERENT AS SHOWN)

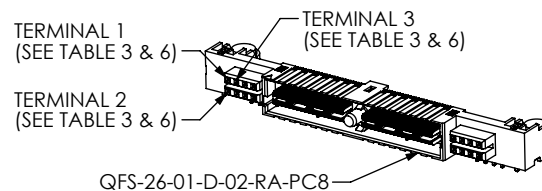
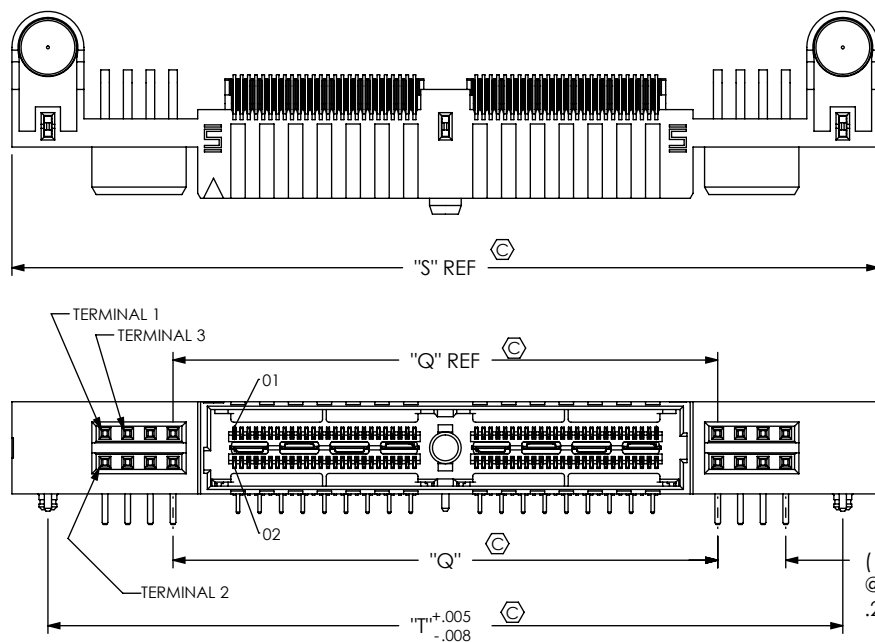


TABLE 7					
POSITION	"P"	"Q"	"R"	"S"	"T"
-026	1.855 [47.12]	1.051 [26.70]	1.605 [40.77]	2.170 [55.12]	1.920 [48.77]
-052	2.695 [68.45]	1.891 [48.03]	2.445 [62.10]	3.010 [76.45]	2.760 [70.10]
-078	3.535 [89.79]	2.731 [69.37]	3.285 [83.44]	3.850 [97.79]	3.600 [91.44]
-104	4.375 [111.13]	3.571 [90.70]	4.125 [104.78]	4.690 [119.13]	4.440 [112.78]

CPC FREQUENCY THIS SHEET	
A	C28
B	C22, C23, C26, C27, C34, C35, C36
C	
D	

PROPRIETARY NOTE  
THIS DOCUMENT CONTAINS INFORMATION  
CONFIDENTIAL AND PROPRIETARY TO  
SAMTEC, INC. AND SHALL NOT BE REPRODUCED  
OR TRANSFERRED TO OTHER DOCUMENTS OR  
DISCLOSED TO OTHERS OR USED FOR ANY  
PURPOSE OTHER THAN THAT WHICH IT WAS  
OBTAINED WITHOUT THE EXPRESSED WRITTEN  
CONSENT OF SAMTEC, INC.

DO NOT SCALE DRAWING

SHEET SCALE: 1.5:1

**samtec**

520 PARK EAST BLVD. NEW ALBANY, IN 47150  
PHONE: 812-944-6733 FAX: 812-948-5047  
e-Mail: info@SAMTEC.com code 55322

DESCRIPTION:  
.635mm DUAL ROW RIGHT ANGLE SOCKET ASSEMBLY

DWG. NO.  
**QFS-XXX-XX-XX-D-RA-XXX-XX**

BY: CLAY W 8/25/2006 SHEET 5 OF 6

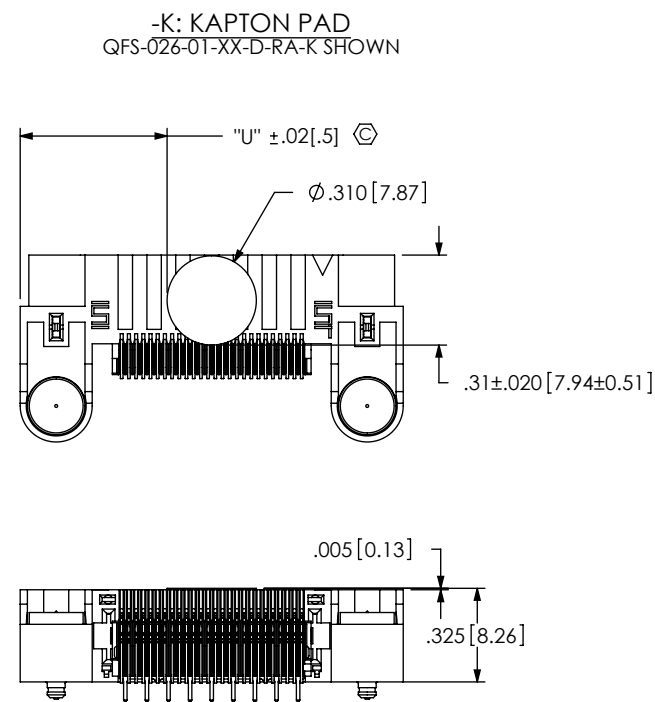
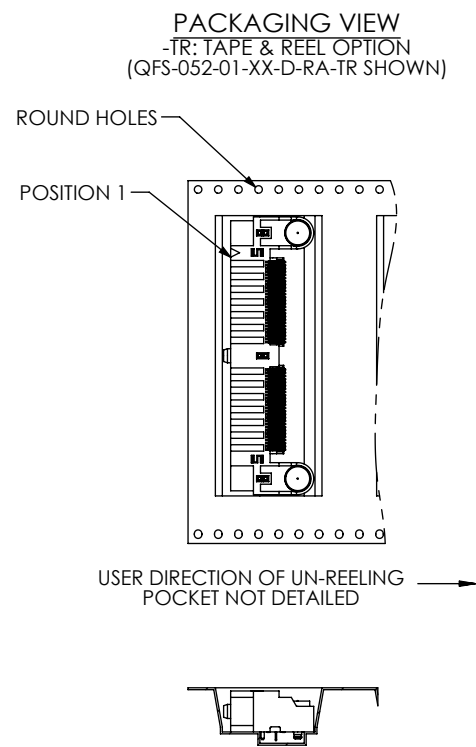



TABLE 4			
	STANDARD & -MG	-PC4	-PC8
POS.	"U"		
-026	0.511 [12.98]	0.774 [19.66]	0.931 [23.65]
-052	0.931 [23.65]	1.194 [30.33]	1.351 [34.32]
-078	1.351 [34.32]	1.614 [41.00]	1.771 [44.98]
-104	1.771 [44.98]	2.033 [51.65]	2.091 [53.11]

<p>PROPRIETARY NOTE</p> <p>THIS DOCUMENT CONTAINS INFORMATION CONFIDENTIAL AND PROPRIETARY TO SAMTEC, INC. AND SHALL NOT BE REPRODUCED OR TRANSFERRED TO OTHER DOCUMENTS OR DISCLOSED TO OTHERS OR USED FOR ANY PURPOSE OTHER THAN THAT WHICH IT WAS OBTAINED WITHOUT THE EXPRESSED WRITTEN CONSENT OF SAMTEC, INC.</p> <p>DO NOT SCALE DRAWING</p> <p>SHEET SCALE: 6:1</p>	 <p>520 PARK EAST BLVD, NEW ALBANY, IN 47150 PHONE: 812-944-6733 FAX: 812-948-5047 e-Mail info@SAMTEC.com code 55322</p>	
	DESCRIPTION: .635mm DUAL ROW RIGHT ANGLE SOCKET ASSEMBLY	
	DWG. NO. QFS-XXX-XX-XX-D-RA-XXX-XX	
	BY: CLAY W	8/25/2006

# Mouser Electronics

Authorized Distributor

Click to View Pricing, Inventory, Delivery & Lifecycle Information:

[Samtec:](#)

[QFS-026-02-L-D-RA-PC4](#) [QFS-052-02-L-D-RA-K](#) [QFS-026-01-H-D-RA-TR](#) [QFS-104-01-H-D-RA](#) [QFS-052-02-S-D-RA-K](#) [QFS-104-01-L-D-RA-K](#) [QFS-026-01-L-D-RA-PC4-TR](#)