

NOTES:

1. REPRESENTS A CRITICAL DIMENSION.
2. MINIMUM PUSHOUT FORCE: 16 OZ FOR TERMINALS, 12 OZ FOR WELD TABS, AND 8 OZ FOR LOCKING CLIPS.
3. MEASURED FROM BEND.
4. MAXIMUM TERMINAL BURR: .003 [.08].
5. MAXIMUM HEIGHT VARIATION BETWEEN ANY TWO PINS: .005 [.13].
6. DUE TO THE HIGH AMOUNT OF INSERTION FORCE NEEDED, THE -LC OPTION IS NOT COMPATIBLE WITH AUTO PLACEMENT. SAMTEC RECOMMENDS MANUAL PLACEMENT FOR ALL ASSEMBLIES WITH THE -LC OPTION.

DO NOT  
SCALE FROM  
THIS PRINT

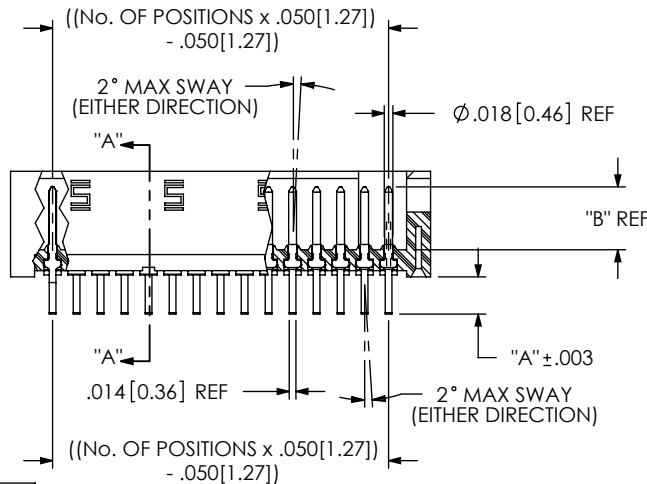
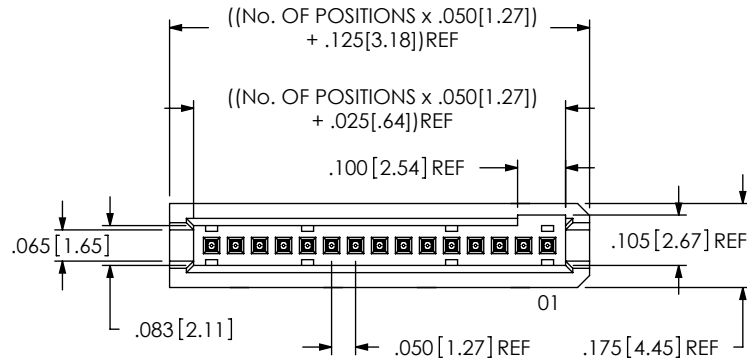


FIG 1  
(TFM-115-01-X-S-XX SHOWN)

TABLE 1	
POSITION	COPLANARITY
-02 THRU -29	.004 [.10]
-030 THRU -39	.006 [.15]
-40 THRU -50	.008 [.20]

TABLE 2					
LEAD STYLE	BODY	"A"	"B"	"C"	"E"
-01	TFM-XX-S-01-XX	.078 [1.98]	.131 [3.33]	.428 [10.87]	.303 [7.70]
-02	TFM-XX-S-01-XX	N/A	.131 [3.33]	.428 [10.87]	.231 [5.87]
-03	TFM-XX-S-01-XX	.111 [3.33]	.139 [3.53]	.645 [16.38]	.356 [9.04]

TFM-1XX-XX-X-S-XX

No OF POSITIONS  
ALL POSITIONS AVAILABLE  
-02 THRU -50

LEAD STYLE

- 01: T-1R16-01-X-2 THROUGH HOLE
- 02: T-1R16-01-X-2 SURFACE MOUNT
- 03: T-1R16-10-X THROUGH HOLE

PLATING SPECIFICATIONS

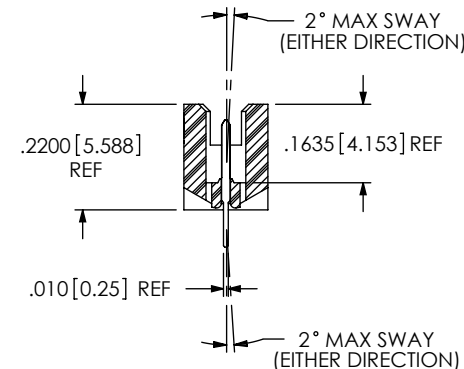
- S: 30μ" SELECTIVE GOLD IN CONTACT AREA, MATTE TIN ON TAIL
- F: 3μ" FLASH GOLD IN CONTACT AREA, MATTE TIN ON TAIL
- L: 15μ" LIGHT GOLD IN CONTACT AREA, MATTE TIN ON TAIL
- H: 30μ" HEAVY GOLD IN CONTACT AREA, 3μ" GOLD ON TAIL
- T: MATTE TIN CONTACT AND TAIL

OPTION

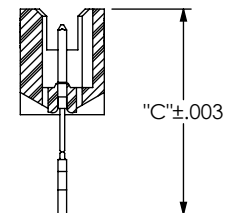
- A: ALIGNMENT PIN (USE TFM-XX-S-01-A) (NOT AVAILABLE WITH -WT OPTION) (SEE FIG 5, SHEET 2)
- LC: LOCKING CLIP (USE LC-05-TM) (NOT AVAILABLE WITH -WT OPTION) (SEE FIG 7, SHEET 3) (SEE NOTE 6)
- P: PICK AND PLACE PAD (USE PPP-15) (SEE FIG 6, SHEET 2) (ONLY AVAILABLE ON -08 THRU -50 POSITIONS)
- K: POLYIMIDE FILM (SEE FIG 3, SHEET 2) (USE K-DOT-.217-.313-.005)
- WT: WELD TABS (USE WT-25-07-T) (SEE FIG 4, SHEET 2) (AVAILABLE ON -02 THRU -30 POS ONLY) (NOT AVAILABLE WITH -A OR -LC OPTIONS)
- TR: TAPE & REEL (SEE SHEET 3, TAPE AND REEL VIEW)
- \*\*SN: SOLDER NAIL (USE WT-27-03) (NOT AVAILABLE WITH -A, -LC, OR -WT OPTIONS) (SEE FIG 8, SHEET 3)

BODY SPECIFICATION  
-S: SINGLE ROW  
(USE TFM-XX-S-XX-XX)

\*\* NOT TOOLED



SECTION "A"-"A"



IN-PROCESS

UNLESS OTHERWISE SPECIFIED,  
DIMENSIONS ARE IN INCHES.

TOLERANCES ARE:

DECIMALS ANGLES  
.XX: ±.01 [.3] 2°  
.XXX: ±.005 [.13]  
.XXXX: ±.0020 [.051]

PROPRIETARY NOTE

THIS DOCUMENT CONTAINS INFORMATION  
CONFIDENTIAL AND PROPRIETARY TO  
SAMTEC, INC. AND SHALL NOT BE REPRODUCED  
OR TRANSFERRED TO OTHER DOCUMENTS OR  
DISCLOSED TO OTHERS OR USED FOR ANY  
PURPOSE OTHER THAN THAT WHICH IT WAS  
OBTAINED WITHOUT THE EXPRESSED WRITTEN  
CONSENT OF SAMTEC, INC.

MATERIAL: DO NOT SCALE DRAWING  
INSULATOR: LCP, UL 94 V0, COLOR: BLACK  
TERMINAL: PHOSPHOR BRONZE

SHEET SCALE: 1:0.4

DESCRIPTION:  
.050 C.L. SINGLE ROW SHROUDED TERMINAL STRIP

DWG. NO. TFM-1XX-XX-X-S-XX

BY: D. SCHMELZ 8/21/2008 SHEET 1 OF 3

**samtec**

520 PARK EAST BLVD, NEW ALBANY, IN 47150  
PHONE: 812-944-6733 FAX: 812-948-5047  
e-Mail: info@SAMTEC.com code 55322

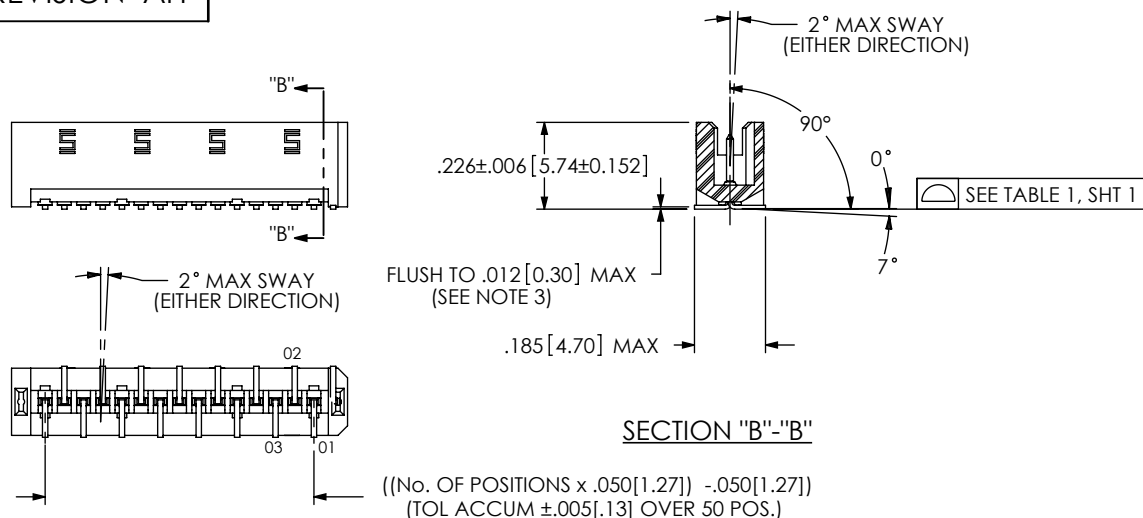


FIG 2  
SURFACE MOUNT  
(TFM-115-02-X-S-XX SHOWN)  
(DIFFERENT AS SHOWN, OTHERWISE SAME AS FIG 1)

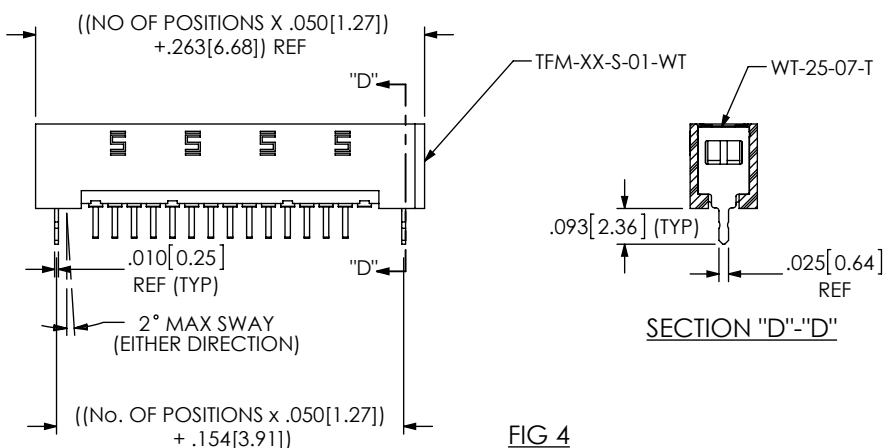


FIG 4  
-WT OPTION  
(TFM-114-01-X-S-WT SHOWN)  
(DIFFERENT AS SHOWN, OTHERWISE SAME AS FIG 1)

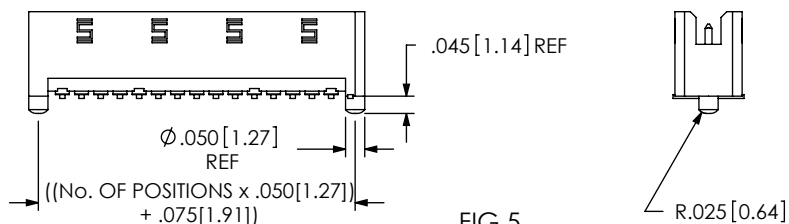


FIG 5  
-A OPTION  
(TFM-115-02-X-S-A SHOWN)  
(DIFFERENT AS SHOWN, OTHERWISE SAME AS FIG 1)

NOTE: "R" = OVERALL LENGTH REF  
"S" = ((("R" - .216 [5.49]) / 2) ±.020 [.51])

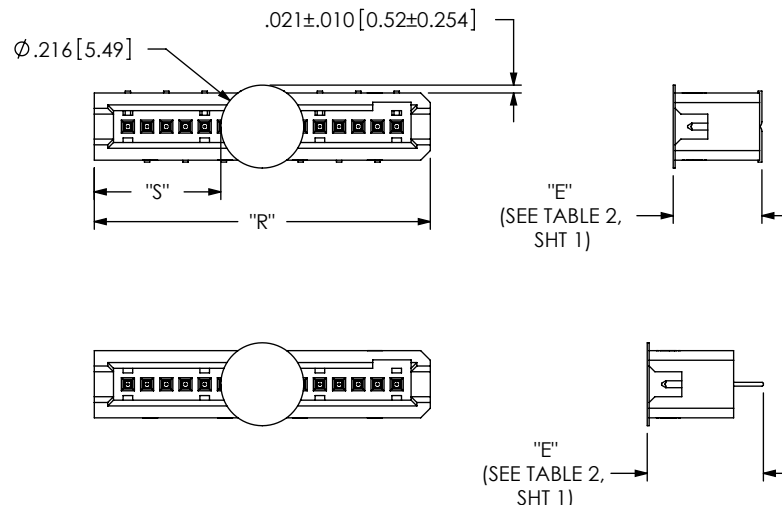


FIG 3  
-K: POLYIMIDE FILM PAD  
(TFM-115-02-X-S-K SHOWN)

NOTE: "M" = (No. OF POSITIONS x .050 [1.27]) + .125 [3.18] REF  
WITH -WT "M" = (No. OF POSITIONS x .050 [1.27]) + .263 [6.68] REF  
"P" = ((("M" - .375 [9.53]) / 2) ±.020 [.51])

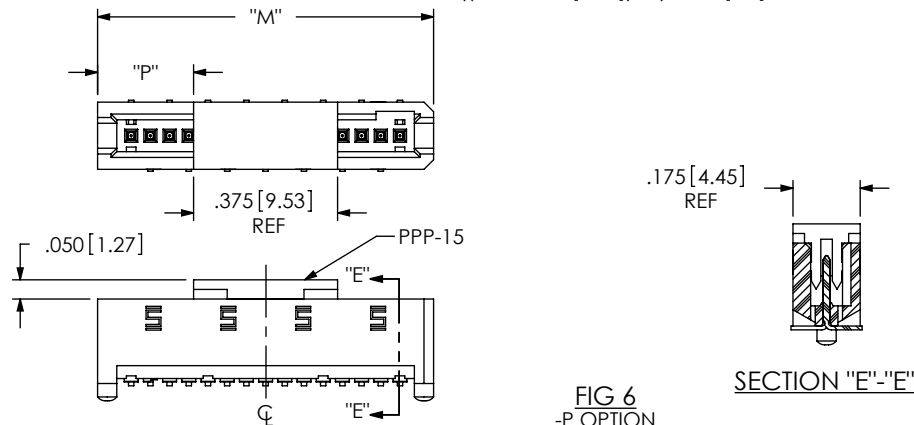


FIG 6  
-P OPTION  
(TFM-115-02-X-S-P SHOWN)  
(DIFFERENT AS SHOWN, OTHERWISE SAME AS FIG 1)  
(PAD TO BE POSITIONED ON CL AS SHOWN)

PROPRIETARY NOTE

THIS DOCUMENT CONTAINS INFORMATION CONFIDENTIAL AND PROPRIETARY TO SAMTEC, INC. AND SHALL NOT BE REPRODUCED OR TRANSFERRED TO OTHER DOCUMENTS OR DISCLOSED TO OTHERS OR USED FOR ANY PURPOSE OTHER THAN THAT WHICH IT WAS OBTAINED WITHOUT THE EXPRESSED WRITTEN CONSENT OF SAMTEC, INC.

DO NOT SCALE DRAWING

SHEET SCALE: 2:1

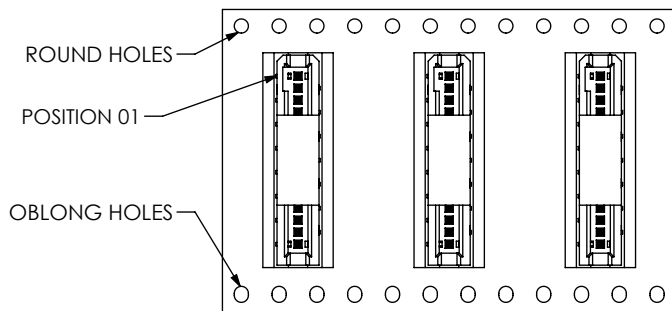
**samtec**

520 PARK EAST BLVD, NEW ALBANY, IN 47150  
PHONE: 812-944-6733 FAX: 812-948-5047  
e-Mail: info@SAMTEC.com code 55322

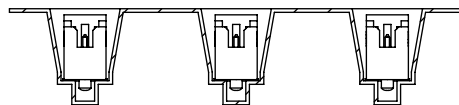
DESCRIPTION:  
.050 C.L. SINGLE ROW SHROUDED TERMINAL STRIP

DWG. NO.  
**TFM-1XX-XX-X-S-XX**

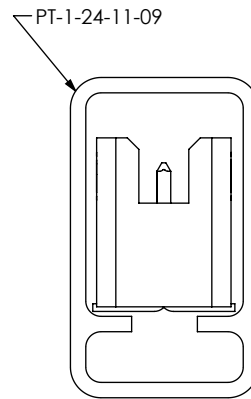
BY: D. SCHMELZ 8/21/2008 SHEET 2 OF 3



USER DIRECTION OF UN-REELING  
POCKET NOT DETAILED



TAPE AND REEL VIEW



PACKAGING TUBE VIEW

NOTES:

1. USE PT-1-24-11-09 TUBE AND (2) TP-24.
2. USE PT-1-24-03-09 TUBE AND (2) TP-09 FOR -P AND -K OPTIONS.
3. LOAD TUBE WITH 1ST POSITION IN SAME DIRECTION AS ARROW

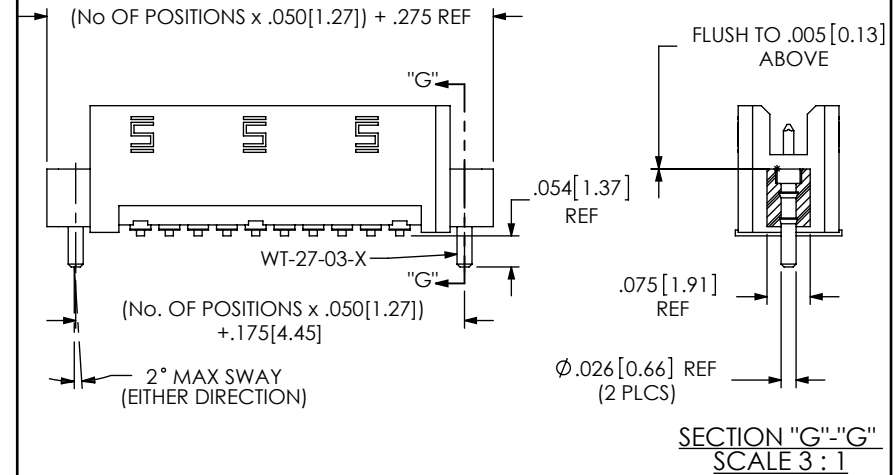


FIG 8  
\*\* -SN OPTION  
(TFM-110-02-X-SN SHOWN)  
(DIFFERENT AS SHOWN, OTHERWISE SAME AS FIG 1)

\*\* NOT TOOLED

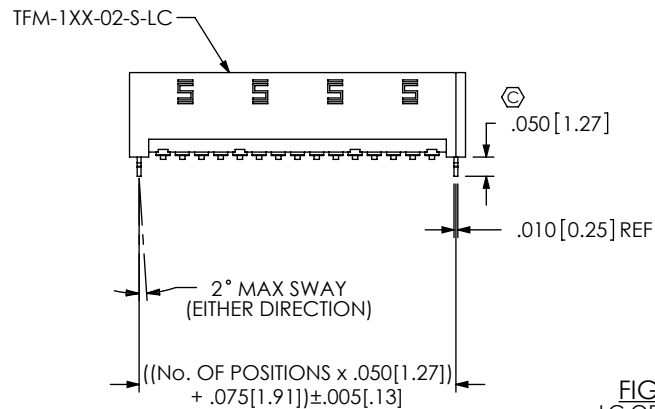
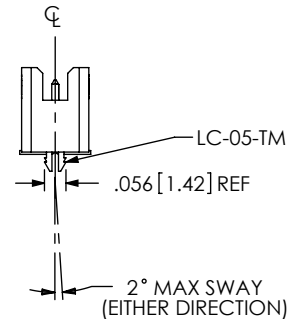


FIG 7  
-LC OPTION  
(TFM-115-01-X-S-LC SHOWN)  
(DIFFERENT AS SHOWN, OTHERWISE SAME AS FIG 2)



\* INSPECT ONLY WHEN APPLICABLE WITH RESPECT TO ASSEMBLY OPTION

PROPRIETARY NOTE

THIS DOCUMENT CONTAINS INFORMATION  
CONFIDENTIAL AND PROPRIETARY TO  
SAMTEC, INC. AND SHALL NOT BE REPRODUCED  
OR TRANSFERRED TO OTHER DOCUMENTS OR  
DISCLOSED TO OTHERS OR USED FOR ANY  
PURPOSE OTHER THAN THAT WHICH IT WAS  
OBTAINED WITHOUT THE EXPRESSED WRITTEN  
CONSENT OF SAMTEC, INC.

DO NOT SCALE DRAWING

SHEET SCALE: 2:1

**samtec**

520 PARK EAST BLVD, NEW ALBANY, IN 47150  
PHONE: 812-944-6733 FAX: 812-948-5047  
e-Mail info@SAMTEC.com code 55322

DESCRIPTION:  
.050 C.L. SINGLE ROW SHROUDED TERMINAL STRIP

DWG. NO. TFM-1XX-XX-X-S-XX

BY: D. SCHMELZ 8/21/2008 SHEET 3 OF 3

# Mouser Electronics

Authorized Distributor

Click to View Pricing, Inventory, Delivery & Lifecycle Information:

[Samtec:](#)

[TFM-104-02-L-S-A-K](#) [TFM-110-02-L-S-WT-TR](#) [TFM-110-02-L-S-WT-P-TR](#) [TFM-130-02-L-S-A-K-TR](#) [TFM-103-02-L-S-A-K](#) [TFM-115-02-L-S-WT-P-TR](#) [TFM-107-02-L-S-LC-K](#) [TFM-107-02-L-S-WT-TR](#) [TFM-120-02-L-S-P-TR](#)