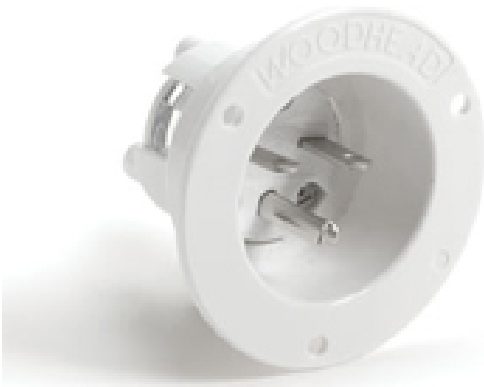




Part Number : 1301490009
Product Description : Safeway Flanged Inlet, 2 Pole/3 Wire, NEMA 6-15, 250V
Series Number : 130149
Status : Active
Product Category : Wiring Devices
Engineering Number : 1449MB



Product Environment Compliance

Compliance

China RoHS	Not Reviewed
EU ELV	Not Reviewed
Low-Halogen Status	Not Reviewed
REACH SVHC	Not Reviewed
EU RoHS	Not Reviewed

Multiple Part Product Compliance Statements

- Eu RoHS
- REACH SVHC
- Low-Halogen

Multiple Part Industry Compliance Documents

- IPC 1752A Class C
- IPC 1752A Class D
- Molex Product Compliance Declaration
- IEC-62474
- chemSHERPA (xml)

EU RoHS Certificate of Compliance

Part Details

General

Status	Active
Category	Wiring Devices

Series	130149
Description	Safeway Flanged Inlet, 2 Pole/3 Wire, NEMA 6-15, 250V
IP Rating	N/A
NEMA Configuration	NEMA 6-15
Product Family	Heavy-Duty Industrial Wiring Devices
Product Name	Safeway
Specialty	N/A
Type	Inlet
UPC	78678870017

Agency

CSA	LR6837
-----	--------

Electrical

Current - Maximum per Contact	15.0A
GFCI	No
Voltage - Maximum	250V

Physical

Cord Type	N/A
Flange	Yes
Flip Lid	No
Gender	Male
Length	N/A
Lighted Connector	No
Locking Blade	No
Poles	2-pole/3-wire
Receptacle Type	Single