

TABLE I

SHELL SIZE	A	B	C	D ±.005	E	F ±.005	G	H	MAX DASH NO
1	1.328	.610	.75	.984	1.199	1.848	2.273		45
2	1.656	.610	.75	1.312	1.363	2.176	2.601		45
3	2.196	.610	1.00	1.852	1.633	2.716	3.141	1.000	45
4	2.844	.610	1.00	2.500	1.957	3.364	3.789	1.250	45
5	2.780	.720	1.25	2.406	1.925	3.300	3.725	1.200	60
6	2.844	.784	1.25	2.500	1.957	3.364	3.789	1.200	60

TABLE II

DASH NO	J DIA	K DIA	L DIA
37	.375	.445	.485
45	.450	.520	.560
60	.600	.670	.710

TABLE III

SYM	FINISH DESCRIPTION
M	ELECTROLESS NICKEL

PART NUMBER DEVELOPMENT

EXAMPLE: 557 T 154 M 2 37 A

PRODUCT SERIES —

ENTRY LOCATION —
T = TOP ENTRY

BASIC NO —

FINISH SYM, TABLE III —

SHELL SIZE, TABLE I —

DASH NO, SEE TABLE II —

HOLE REQUIREMENT

A = DRILLED HOLE THRU B & C BLIND
 B = DRILLED HOLE THRU A & C BLIND
 C = DRILLED HOLE THRU A & B BLIND
 D = A, B DRILL THRU C BLIND
 E = B & C DRILL THRU A BLIND
 F = A & C DRILL THRU B BLIND
 OMIT FOR 3 BLIND HOLES

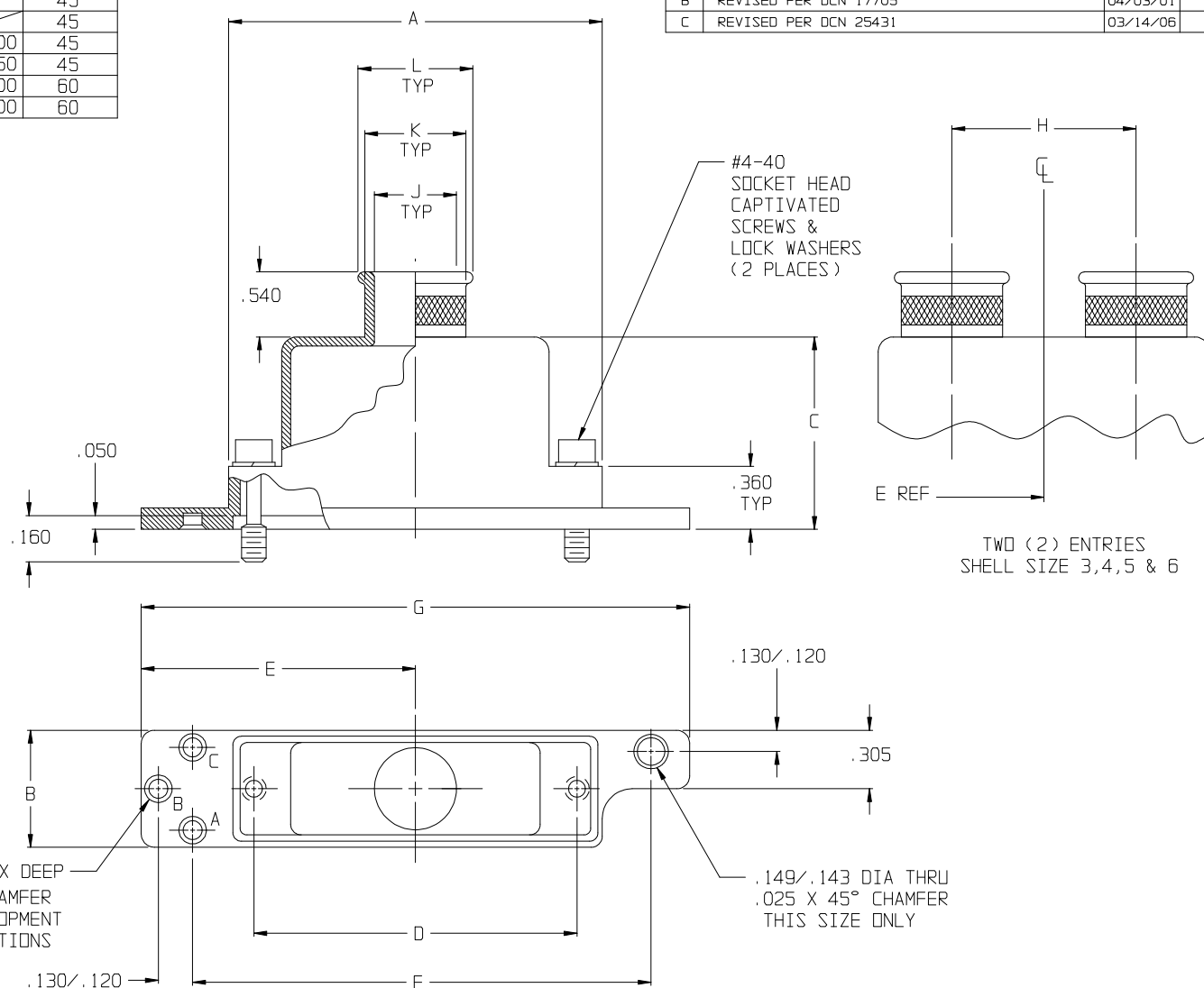
.145 DIA X .115 MAX DEEP
 .025 X 45° CHAMFER
 SEE P/N DEVELOPMENT
 FOR HOLE POSITIONS
 DRILLED THRU



NOTES:

- ASSEMBLY IDENTIFICATION WITH MANUFACTURER'S NAME AND P/N, SPACE PERMITTING.
- EQUIVALENT TO HUGHES 1G44.
- ASSEMBLY TO BE SUPPLIED WITH 3 HOLES EITHER WITH 3 BLIND HOLES (WHEN OMITTED IN P/N DEVELOPMENT) OR 1 HOLE DRILLED THRU, WITH 2 BLIND HOLES. SEE PART NUMBER DEVELOPMENT FOR OPTIONS.
- MATERIAL/FINISH:
BACKSHELL - AL. ALLOY/SEE TABLE II
HARDWARE - CRES/PASSIVATED

REVISIONS

SYM.	DESCRIPTION	DATE	APPROVED
A	RELEASED	10/18/00	T.L
B	REVISED PER DCN 17705	04/03/01	T.L
C	REVISED PER DCN 25431	03/14/06	T.L



UNLESS OTHERWISE SPECIFIED DIMENSIONS ARE IN INCHES TOLERANCES: FRACTIONS ± 1/16 DECIMALS .XX ± .03 .XXX ± .015 ANGLES ± 2° DO NOT SCALE THIS DRAWING	DRAWN	T. LE	08/19/96	GLENAIR, INC. 1211 AIR WAY - GLENDALE - CALIFORNIA 91201		
	CHECK	P. DAKES	08/19/96			
	ENGR	R. PAINTER	08/19/96	BACKSHELL, RFI/EMI, SPECIAL PURPOSE FOR MIL-DTL-24308 CONNECTORS		
	 APPROVED					
	 APPROVED			CODE IDENT. NO.	SIZE	REV.
B/F 96-3132	P/C 55	NON REPARABLE COMMERCIAL ITEM	SCALE N/A	WEIGHT N/A	SHEET 1 OF 1	

Mouser Electronics

Authorized Distributor

Click to View Pricing, Inventory, Delivery & Lifecycle Information:

Glenair:

[557T154M337C](#) [557T154M545D](#) [557T154M545B](#) [557T154M337B](#) [557T154M545E](#) [557T154M545C](#)
[557T154M545A](#) [557T154M545F](#)