

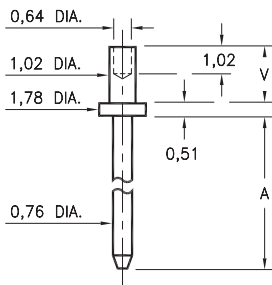
MALE PCB PINS

PRINTED CIRCUIT PINS

3110/3111

311X-X-00-XX-00-00-08-0

Swage mount in 1,09 hole

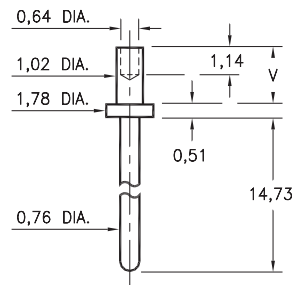


Basic Part Number	Board Thickness	Length A	Length V
3110-1	0,79	3,81	1,30
3110-2	1,57	3,81	2,08
3110-3	2,39	3,81	2,87
3111-1	0,79	7,62	1,30
3111-2	1,57	7,62	2,08
3111-3	2,39	7,62	2,87

3150

3150-X-00-XX-00-00-08-0

Swage mount in 1,09 mounting hole

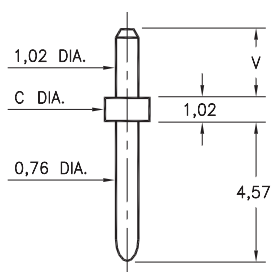


Basic Part Number	Board Thickness	Length V
3150-1	0,79	1,30
3150-2	1,57	2,08

3136/3137

313X-X-00-XX-00-00-08-0

Solder mount in 1,09 mounting hole

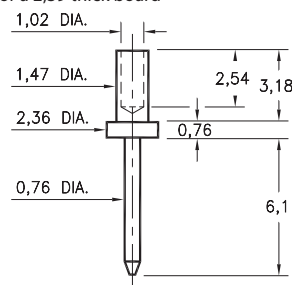


Basic Part Number	Board Thickness	Length V	Flange Dia. C
3136-1	1,57	2,08	
3136-2	2,39	2,79	1,98
3136-3	3,18	3,68	
3137-1	1,57	2,08	1,57
3137-2	2,39	2,79	
3137-3	3,18	3,68	
3137-4	3,96	4,70	

3148

3148-3-00-XX-00-00-08-0

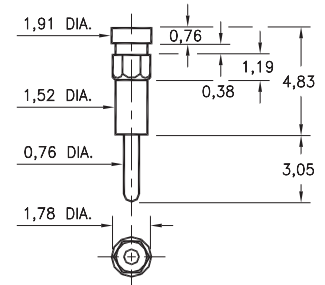
Swage mount in 1,57 hole
For a 2,39 thick board



8815

8815-0-00-XX-00-00-03-0

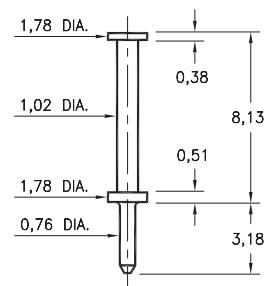
Hex press-fit in 1,68 plated through-hole



6821

6821-0-00-XX-00-00-08-0

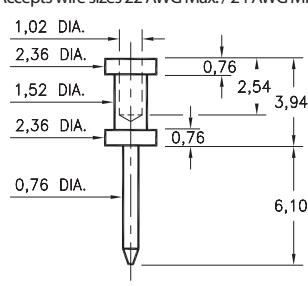
Turret terminal pin



3132

3132-0-00-XX-00-00-08-0

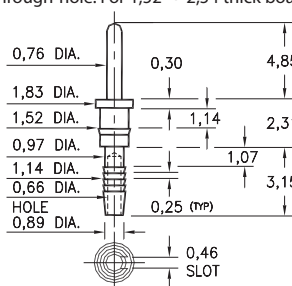
Wire crimp termination, Annealed
Accepts wire sizes 22 AWG Max. / 24 AWG Min.



5601

5601-0-01-XX-00-00-03-0

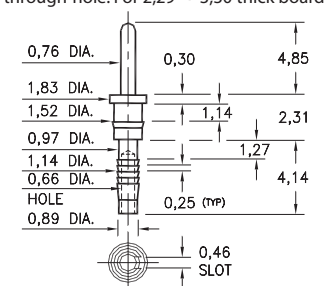
Compliant press-fit in 1,02 ± 0,08 plated through-hole. For 1,52 → 2,54 thick board



5602

5602-0-01-XX-00-00-03-0

Compliant press-fit in 1,02 ± 0,08 plated through-hole. For 2,29 → 3,30 thick board



SPECIFICATIONS:

Pin Material: Brass Alloy 360, 1/2 Hard
(Except swage pins which are annealed)

Dimensions: Millimeters

Tolerances On: Lengths: ± 0,13
Diameters: ± 0,051
Angles: ± 2°



ORDER CODE: XXXX - X - 0X - XX - 00 - 00 - XX - 0

BASIC PART #

SPECIFY PIN FINISH:

- 01 5,08µm TIN/LEAD OVER NICKEL
- ◆ 80 5,08µm TIN OVER NICKEL (RoHS)
- ◆ 15 0,25µm GOLD OVER NICKEL (RoHS)
- ◆ 21 0,51µm GOLD OVER NICKEL (RoHS)
- ◆ 34 1,27µm GOLD OVER NICKEL (RoHS)



Mouser Electronics

Authorized Distributor

Click to View Pricing, Inventory, Delivery & Lifecycle Information:

Mill-Max:

[3137-2-00-01-00-00-08-0](#) [3110-3-00-01-00-00-08-0](#) [3111-2-00-34-00-00-08-0](#) [3111-2-00-21-00-00-08-0](#) [3148-3-00-80-00-00-08-0](#) [3137-2-00-80-00-00-08-0](#) [3137-1-00-80-00-00-08-0](#) [3136-2-00-80-00-00-08-0](#) [3111-3-00-80-00-00-08-0](#) [3111-1-00-80-00-00-08-0](#) [3110-3-00-80-00-00-08-0](#) [3110-1-00-80-00-00-08-0](#) [3110-1-00-21-00-00-08-0](#) [3110-3-00-15-00-00-08-0](#) [3111-3-00-21-00-00-08-0](#) [3111-3-00-34-00-00-08-0](#) [3137-4-00-34-00-00-08-0](#) [3150-1-00-21-00-00-08-0](#) [3150-2-00-21-00-00-08-0](#) [3150-2-00-34-00-00-08-0](#) [5601-0-01-15-00-00-03-0](#)