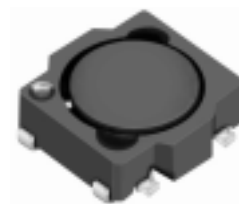


Type: CLS4D18

Description

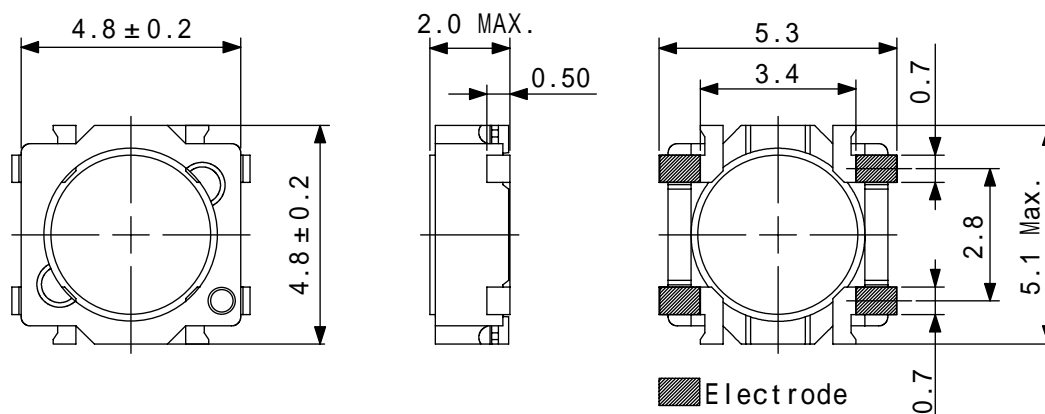
- 4 Terminal pins' type gives a flexible design as inductors or transformers.
- Can also be used as a coupled inductor, two single inductors connected in parallel, as 1:1 transformer or as an autotransformer when connected in series.
- Core material: Ferrite.
- Custom design is available.



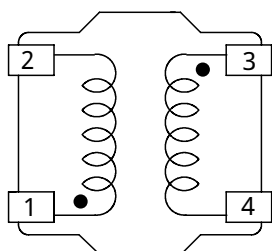
Feature

- Max. Operating frequency: 1MHz.
- 2 in 1 Coils for high efficiency up-down DC-DC converters.(SEPIC, Zeta, Cuk converter).
- Storage temperature range: -40 ~+105 .
- Operating temperature range: -40 ~+105 (including coil's self-heat).
- Product weight: 140mg(Ref.).
- Ideally used in the power supply for DSC, Note PC, DVC and W-LED backlighting.
- RoHS Compliance.

Dimensions (mm)

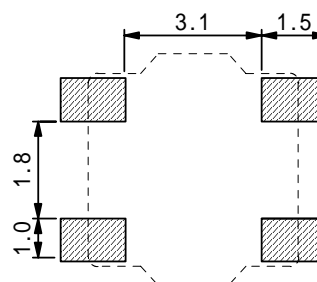


Schematics (Bottom)



“●” indicates polarity.

Land Pattern (mm)



Type: CLS4D18

Specification

Part No.	Stamp	Inductance [Within]	D.C.R. [Max.] (m) (at 20) 1		Saturation Current (A) 2				Temperature Rise current (A) 3	
			(2-1)	(4-3)	In parallel		In series		In parallel	In series
					at 20	at 100	at 20	at 100		
CLS4D18-1R0N	A	1.0μH±30%	52(40)	64(49)	2.10	1.40	1.00	0.77	3.0	1.5
CLS4D18-1R8N	B	1.8μH±30%	69(53)	85(65)	1.50	1.10	0.72	0.56	2.7	1.2
CLS4D18-2R2N	C	2.2μH±30%	75(58)	95(73)	1.20	0.96	0.62	0.51	2.4	1.1
CLS4D18-3R3N	D	3.3μH±30%	95(72)	120(94)	1.10	0.80	0.52	0.40	2.3	0.9
CLS4D18-5R0N	E	5.0μH±30%	145(114)	185(145)	0.96	0.70	0.45	0.34	1.8	0.7
CLS4D18-6R8N	F	6.8μH±30%	175(134)	230(178)	0.72	0.62	0.39	0.30	1.6	0.65
CLS4D18 -100N	G	10μH±30%	310(240)	415(320)	0.64	0.51	0.32	0.26	1.2	0.47

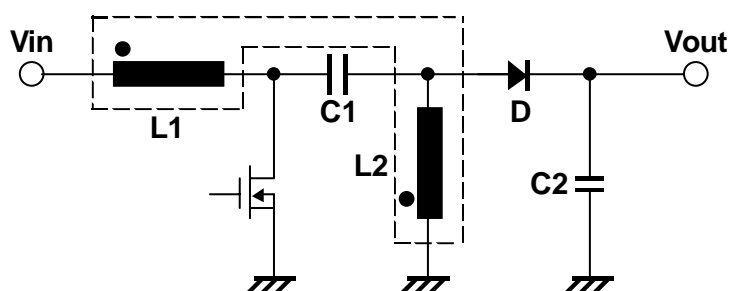
Description of Part Name

CLS4D18 -1R0N

- B Box
- C Carrier Tape

1. () typical value.
2. Saturation Current: The DC current at which the inductance decreases to 90% of it's nominal value.
3. Temperature rise current: The DC current at which the temperature rise is $t = 40$.(Ta = 20).

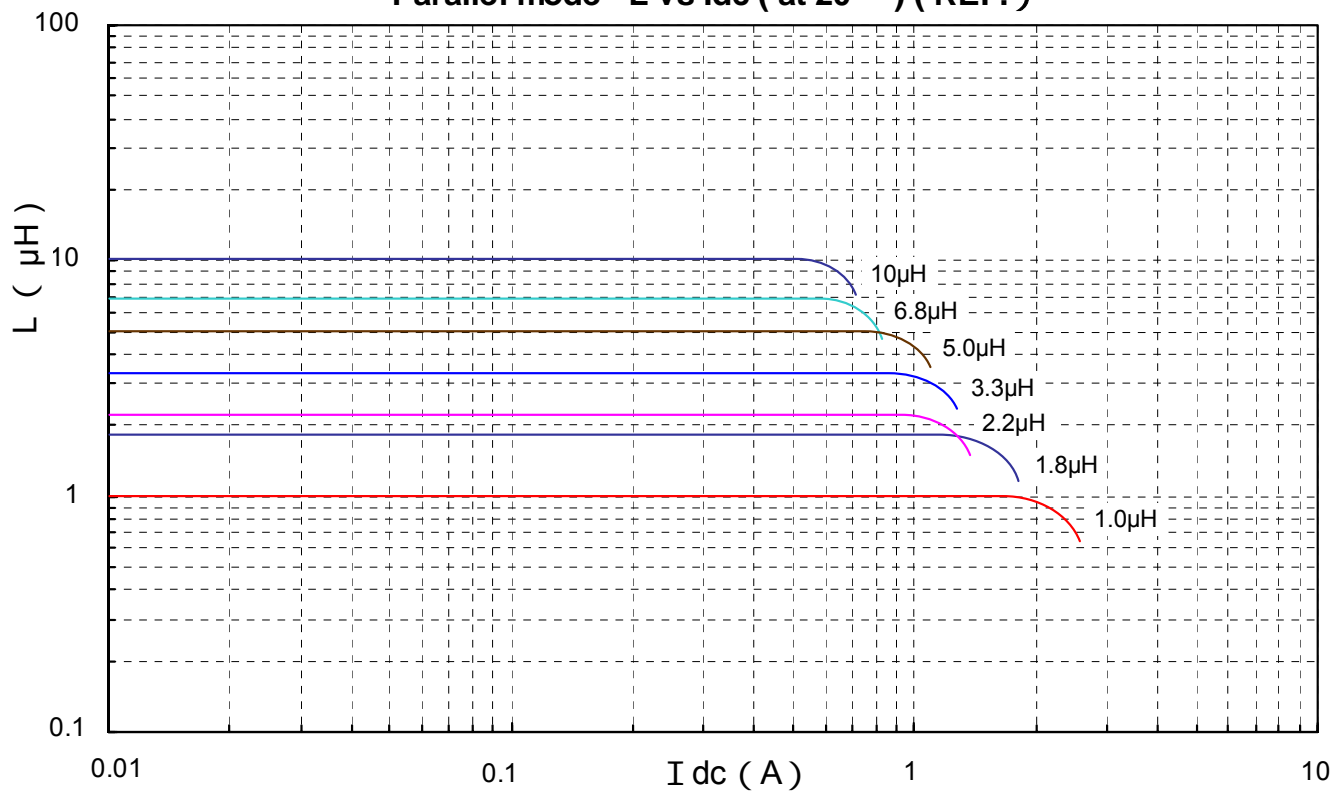
Typical SEPIC Schematic



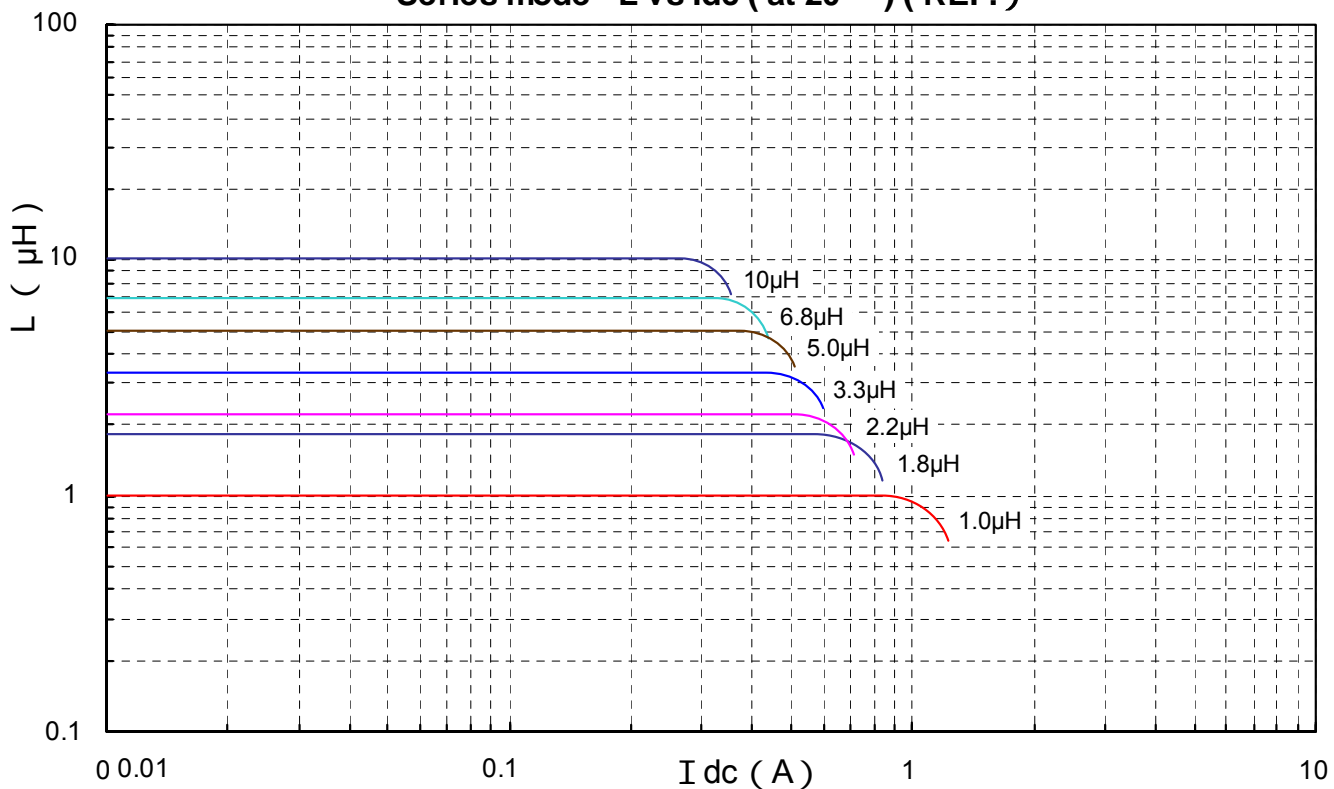
Type: CLS4D18

Typical L Vs Current (REF.)

Parallel mode L vs Idc (at 20) (REF.)

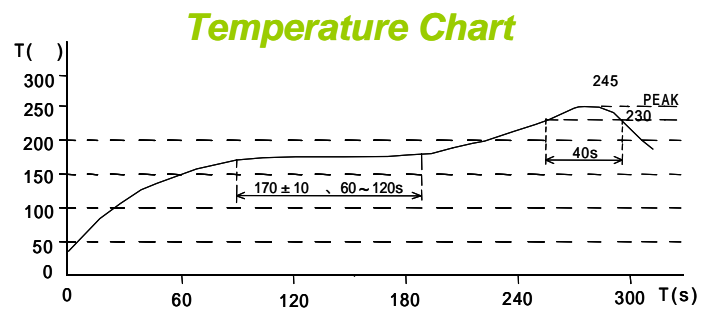
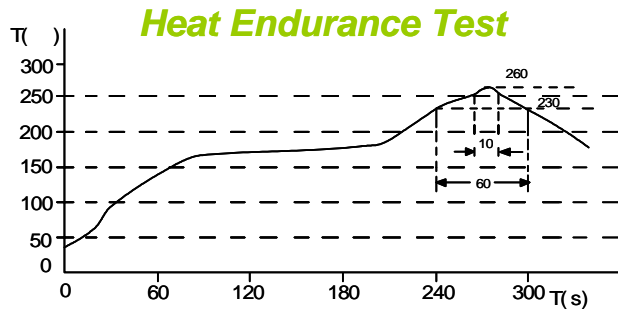


Series mode L vs Idc (at 20) (REF.)



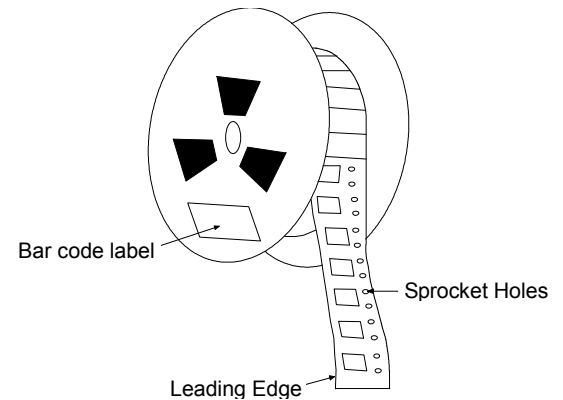
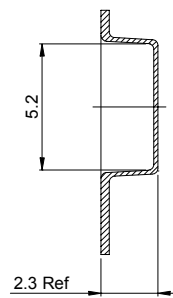
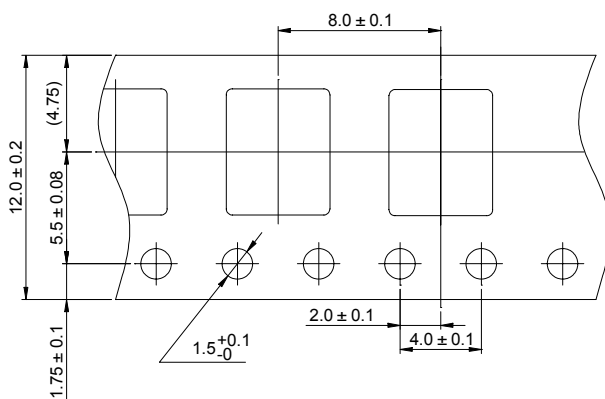
Type: CLS4D18

Recommendation Reflow Condition



Packaging with Embossed Tape and Reel

Qty.: 1000pcs/reel



Mouser Electronics

Authorized Distributor

Click to View Pricing, Inventory, Delivery & Lifecycle Information:

Sumida:

[CLS4D18-6R8NC](#) [CLS4D18-2R2NC](#) [CLS4D18-3R3NC](#) [CLS4D18-100NC](#) [CLS4D18-1R0NC](#) [CLS4D18-5R0NC](#)