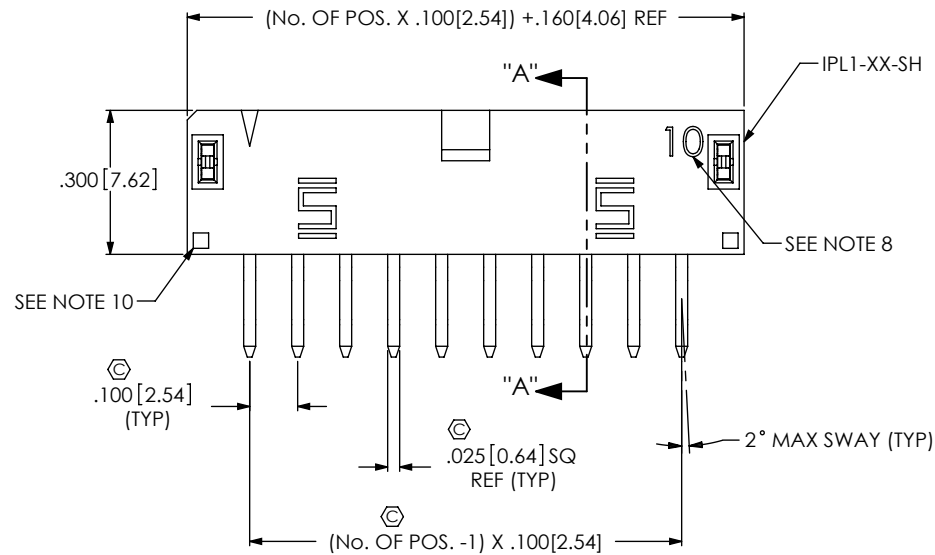
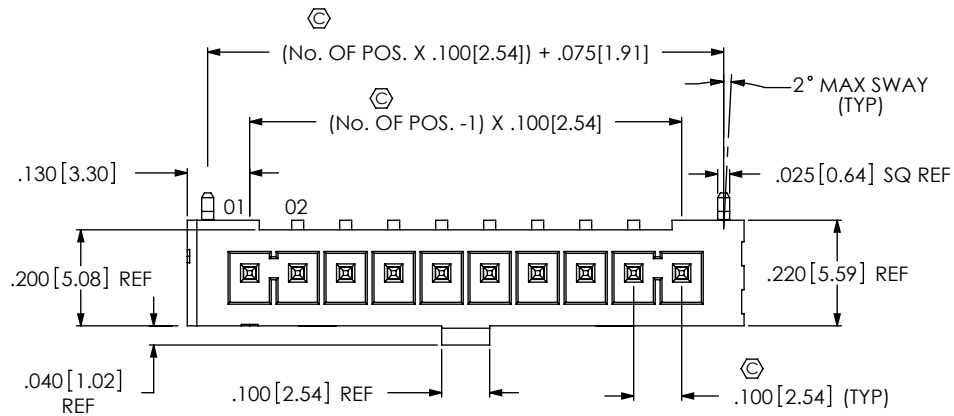


FIG. 1  
(IPL1-110-02-XXX-SH-K SHOWN)



IPL1-1XX-XX-XXX-SH-K-XX **B**

No OF POSITIONS  
-02 THRU -25

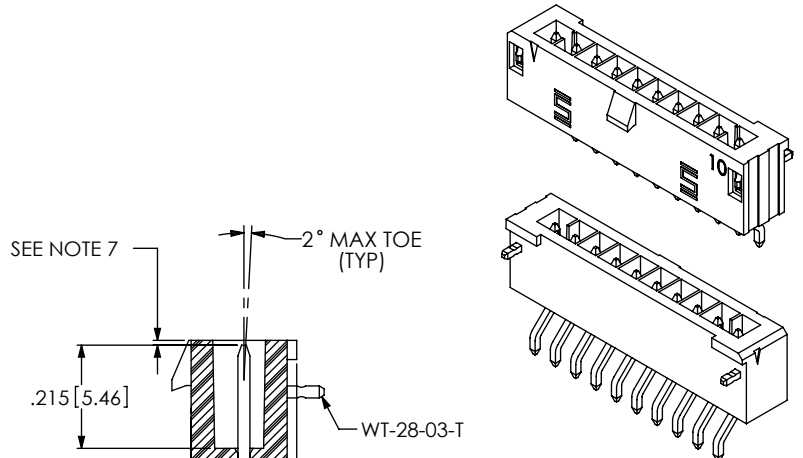
LEAD STYLE  
-02: SINGLE HORIZONTAL .062 BOARD (USE T-1S64-09-XXX)  
-03: SINGLE HORIZONTAL .093 BOARD (USE T-1S64-09-XXX)

PLATING SPECIFICATION  
-F: FLASH SELECTIVE (USE T-1S64-09-F)  
-L: LIGHT SELECTIVE (USE T-1S64-09-L)  
-S: SELECTIVE (USE T-1S64-09-S)  
-STL: SELECTIVE TIN/LEAD (USE T-1S64-09-STL)

OPTION  
-TR: TAPE & REEL (SEE NOTE 9)

POLARIZATION  
-K: KEYED POLARIZATION

ROW SPECIFICATION  
-SH: SINGLE HORIZONTAL



SECTION "A"-"A"  
SCALE 2.5 : 1

NOTES:

1. REPRESENTS A CRITICAL DIMENSION.
2. MINIMUM TERMINAL / WELD TAB RETENTION: 1.0LB. [4.4N]
3. PARTS TO BE MOLDED TO POSITION.
4. POST MUST BE WITHIN .005[0.13] OF EACH OTHER.
5. ALL PIN TO PIN DIMENSIONS TO BE MEASURED FROM TIP TO TIP.
6. DIMENSION TO BE MEASURED AT BEND.
7. TIP TO BE FLUSH TO .010[0.254] BELOW TOP OF SHROUD.
8. THIS NUMBER REPRESENTS THE NUMBER OF POSITIONS PER ROW ONLY AND IS NOT INTENDED TO BE USED IN POSITION NUMBERING.
9. PARTS TO BE PACKAGED IN TUBES IF TAPE & REEL IS NOT SPECIFIED. **B**
10. INDENTION FROM WELD TAB CARRIER IS ALLOWABLE.

UNLESS OTHERWISE SPECIFIED,  
DIMENSIONS ARE IN INCHES.  
TOLERANCES ARE:  
DECIMALS ANGLES  
.XX: ±.01 [.3] 2°  
.XXX: ±.005 [.13]  
.XXXX: ±.0020 [.051]

PROPRIETARY NOTE  
THIS DOCUMENT CONTAINS INFORMATION  
CONFIDENTIAL AND PROPRIETARY TO  
SAMTEC, INC. AND SHALL NOT BE REPRODUCED  
OR TRANSFERRED TO OTHER DOCUMENTS OR  
DISCLOSED TO OTHERS OR USED FOR ANY  
PURPOSE OTHER THAN THAT WHICH IT WAS  
OBTAINED WITHOUT THE EXPRESSED WRITTEN  
CONSENT OF SAMTEC, INC.

MATERIAL: DO NOT SCALE DRAWING  
INSULATOR: LCP, COLOR: BLACK  
TERMINAL: PHOS BRONZE

SHEET SCALE: 2:1

**samtec**

520 PARK EAST BLVD, NEW ALBANY, IN 47150  
PHONE: 812-944-6733 FAX: 812-948-5047  
e-Mail: info@SAMTEC.com code: 55322

DESCRIPTION:  
.100[2.54] SINGLE ROW TERMINAL ASSEMBLY

DWG. NO.  
IPL1-1XX-XX-XXX-SH-K-XX

BY: D. SCHMELZ 10/31/2008 SHEET 1 OF 2

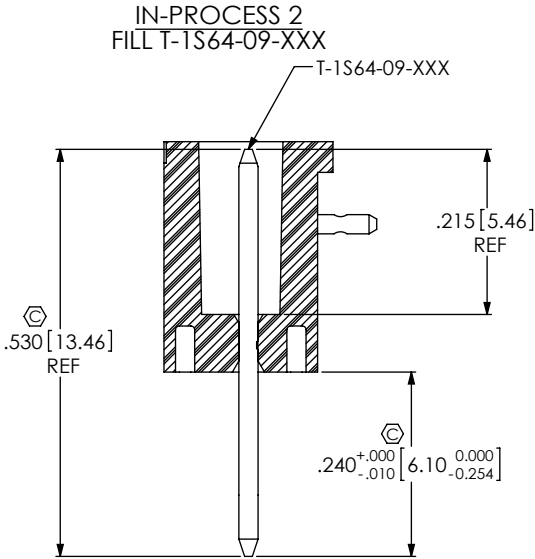
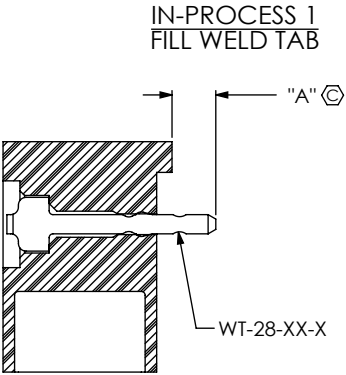
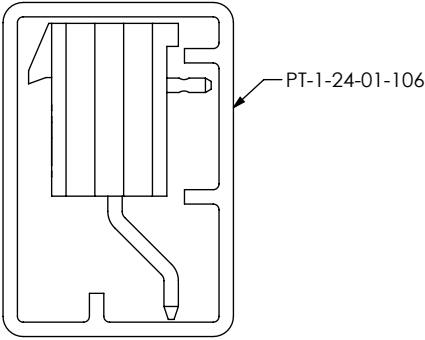


TABLE 1

LEAD STYLE	"A"	WELD TAB
-02	.055	WT-28-03-X
-03	.086	WT-28-04-X

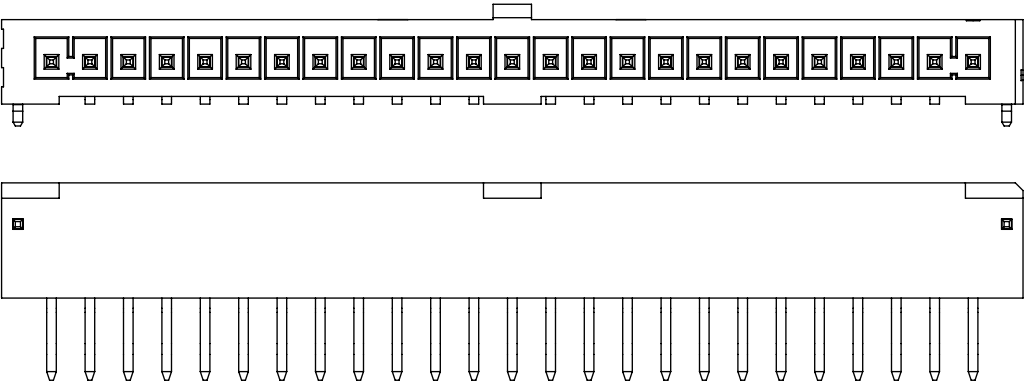
**B** PACKAGING VIEW  
(PARTS TO HAVE POSITION #T LOADED  
IN SAME DIRECTION AS ARROW ON TUBE)



PACKAGING TABLE

LEAD STYLE	PACKAGING TUBE	PLUG
-02	PT-1-24-01-106	TP-07
-03	PT-1-24-01-106	TP-07

FIG. 2  
(IPL1-125-02-XXX-SH-K SHOWN)  
(DIFFERENT AS SHOWN, OTHERWISE SAME AS FIG. 1)



PROPRIETARY NOTE

THIS DOCUMENT CONTAINS INFORMATION  
CONFIDENTIAL AND PROPRIETARY TO  
SAMTEC, INC. AND SHALL NOT BE REPRODUCED  
OR TRANSFERRED TO OTHER DOCUMENTS OR  
DISCLOSED TO OTHERS OR USED FOR ANY  
PURPOSE OTHER THAN THAT WHICH IT WAS  
OBTAINED WITHOUT THE EXPRESSED WRITTEN  
CONSENT OF SAMTEC, INC.

DO NOT SCALE DRAWING

SHEET SCALE: 2:1

**samtec**

520 PARK EAST BLVD, NEW ALBANY, IN 47150  
PHONE: 812-944-6733 FAX: 812-948-5047  
e-Mail: info@SAMTEC.com code: 55322

DESCRIPTION:  
.100 [2.54] SINGLE ROW TERMINAL ASSEMBLY

DWG. NO.  
IPL1-1XX-XX-XXX-SH-K-XX

BY: D. SCHMELZ 10/31/2008 SHEET 2 OF 2