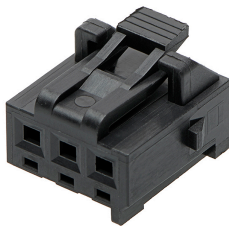




Part Number : [2078410003](#)
Product Description : KK Plus 250 Receptacle Housing, 2.50mm Pitch, Single Row, 3 Circuits, UL 94V-0, Black, Glow-Wire Capable
Series Number : 207841
Status : Active
Product Category : Connector Housings



Documents & Resources

Drawings

[2078410003_sd.pdf](#)
[2078410000-PK-000.pdf](#)

3D Models and Design Files


[2078410003_stp.zip](#)

Specifications

[2079020001-AS-000.pdf](#)
[2079020001-PS-000.pdf](#)
[2079020001-PS-CH-000.pdf](#)
[2079020001-PS-ES-000.pdf](#)
[2079020001-PS-JP-000.pdf](#)
[2079020001-PS-SK-000.pdf](#)
[2079020000-TS-000.pdf](#)

Product Environment Compliance

Compliance

GADSL/IMDS	Not Relevant
China RoHS	
EU ELV	Not Relevant
Low-Halogen Status	Not Low-Halogen per IEC 61249-2-21
REACH SVHC	Not Contained per D(2024)4144-DC (27 June 2024)
EU RoHS	Compliant per EU 2015/863

Multiple Part Product Compliance Statements
- Eu RoHS

- REACH SVHC

- Low-Halogen

Multiple Part Industry Compliance Documents

- IPC 1752A Class C

- IPC 1752A Class D

- Molex Product Compliance Declaration

- IEC-62474

- chemSHERPA (xml)

EU RoHS Certificate of Compliance

Part Details

General

Status	Active
Category	Connector Housings
Series	207841
Description	KK Plus 250 Receptacle Housing, 2.50mm Pitch, Single Row, 3 Circuits, UL 94V-0, Black, Glow-Wire Capable
Application	Power, Wire-to-Board
Product Family	KK Interconnect Systems
Product Name	KK Plus
UPC	191130123940

Agency

CSA	152514
UL	E29179

Physical

Circuits (maximum)	3
Color - Resin	Black
Flammability	94V-0
Gender	Receptacle
Glow-Wire Capable	Yes
Keying to Mating Part	None
Lock to Mating Part	Yes
Material - Resin	Nylon

Net Weight	0.283/g
Number of Rows	1
Packaging Type	Bag
Panel Mount	No
Pitch - Mating Interface	2.50mm
Pitch - Termination Interface	2.50mm
Polarized to Mating Part	Yes
Stackable	No
Temperature Range - Operating	-40° to +105°C

Mates With / Use With

Mates with Part(s)

Description	Part Number
KK Plus 250 Vertical Shrouded Headers	<u>207843</u>

Use with Part(s)

Description	Part Number
KK Plus 250 Female Crimp Terminals	<u>46626</u>
KK Plus 250 Terminal Position Assurance (TPA) Retainers	<u>207845</u>