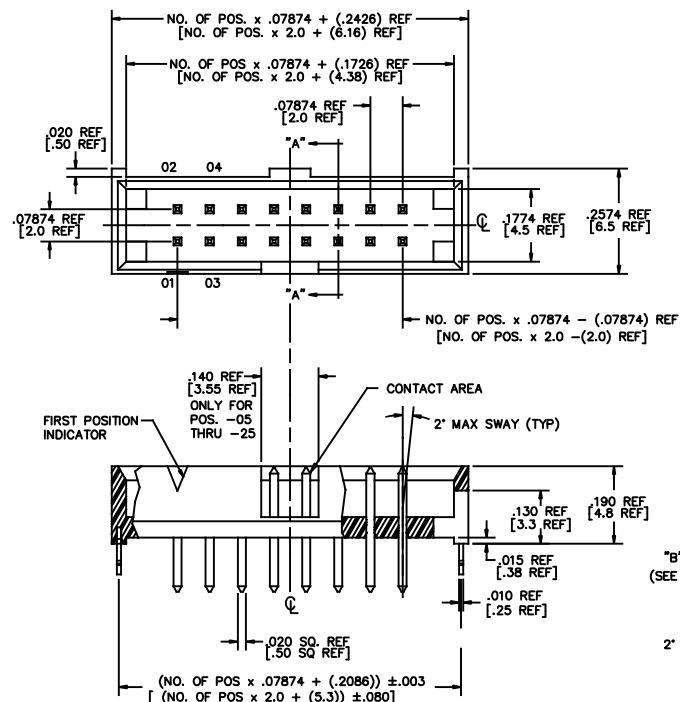
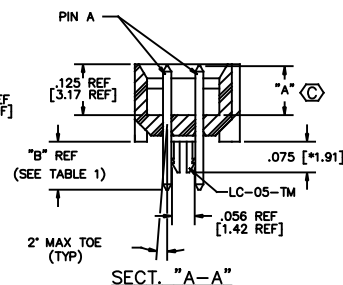


DO NOT SCALE
FROM THIS PRINTTHROUGH HOLE
FIG. 1

SECT. "A-A"

DIMENSIONS ARE IN INCHES

UNLESS OTHERWISE NOTED

TOLERANCES ARE:

ONE PLACE DECIMALS $\pm .1$ [2.5] THREE PLACE DECIMALS $\pm .005$ [.13]
TWO PLACE DECIMALS $\pm .01$ [.3] FOUR PLACE DECIMALS $\pm .0010$ [.025]ANGLES
 $\pm 1^\circ$ TITLE:
2mm C.L. SHROUDED
TERMINAL STRIP TO
MATE WITH CABLE

DWG NO:

STMM-1XX-XX-XX-D-XX-XX
SHEET 1 OF 3

STMM-1XX-XX-XX-D-XX-XX

NO. OF POSITIONS
-02 THRU -25POLARIZED OPTION
XX = PIN NO TO BE OMITTEDTERMINAL STYLE
LEAD STYLE -01 IS STANDARD
(.100 [2.54] POST HEIGHT), LEAD STYLE -02
IS FOR MATING WITH TCSD ONLY
(.120 [3.05] POST HEIGHT) (SEE TABLE 1)

PLATING SPECIFICATIONS

- G: 20 μ GOLD IN CONTACT AREA,
3 μ GOLD ON TAIL
- T: MATTE TIN CONTACT AND TAIL
- S: 30 μ SELECTIVE GOLD IN CONTACT AREA,
MATTE TIN ON TAIL
- L: 10 μ SELECTIVE GOLD IN CONTACT AREA,
MATTE TIN ON TAIL
- F: 3 μ SELECTIVE GOLD IN CONTACT AREA,
MATTE TIN ON TAIL
- H: 30 μ GOLD IN CONTACT AREA,
3 μ GOLD ON TAIL
- SM: 30 μ SELECTIVE GOLD IN CONTACT AREA,
MATTE TIN ON TAIL
- TM: MATTE TIN CONTACT AND TAIL
- LM: 10 μ SELECTIVE GOLD IN CONTACT AREA,
MATTE TIN ON TAIL
- FM: 3 μ SELECTIVE GOLD IN CONTACT AREA,
MATTE TIN ON TAIL

OPTION

- RA: RIGHT ANGLE (SEE FIG 2 -RA & TABLE 1 SHT 1)
- SM: SURFACE MOUNT (SEE TABLE 1 SHT 1 & TABLE 2 SHT 2)
- LC: LOCKING CLIP (SEE NOTE 9)
(USE LC-05-TM FOR THROUGH HOLE STYLE, SEE FIG 1, * DIMS)
(USE LC-07-TM FOR -SM STYLE, SEE FIG 3, SHT 2 * DIMS)
- NOT AVAILABLE FOR -RA STYLE
- LEAVE BLANK FOR THROUGH HOLE (SEE FIG 1 & TABLE 1 SHT 1)
- P: PICK AND PLACE PAD (USE PPP-24, SEE FIG 4 SHT 2)
(3 POSITION MINIMUM) (NOT AVAILABLE WITH -RA OPTION)
- M: METAL PICK AND PLACE PAD (USE MPP-07, SEE FIG 5 SHT 2)
(-SM OPTION ONLY) (3 POSITION MINIMUM) (SEE NOTE 8)
(NOT AVAILABLE WITH -RA OPTION)
- TR: TAPE & REEL (SEE FIG 7 SHT 3). FOR SM OPTION ONLY.
- K: POLYIMIDE FILM PAD (SEE FIG 6, SHT 2)
(USE K-DOT-.295-.406-.005)
(NOT AVAILABLE WITH -RA OPTION)

ROW SPECIFICATION

-D: DOUBLE (USE STMM-XX-D-LC)

NOTES:

- MAX PIN ROTATION IN BODY TO BE 2'.
- PUSHOUT FORCE TO BE 1 lb. MIN.
- ⊕ REPRESENTS CRITICAL DIMS.
- DIMENSIONS IN [] ARE IN MILLIMETERS.
- FOR LOCKING CLIPS: 12 OZ. MIN RETENTION
- MEASURE AT BEND.
- ORIENTATE PINS TO REDUCE THE NUMBER OF
BANDOLIER MARKS IN THE POST AREA. (SEE TABLE 4)
- M OPTION NOT RECOMMENDED WITH -T OR -TM PLATING
OPTIONS FOR LEAD FREE PROCESSING.
- DUE TO THE HIGH AMOUNT OF INSERTION FORCE
NEEDED, THE -LC OPTION IS NOT COMPATIBLE WITH
AUTO PLACEMENT. SAMTEC RECOMMENDS MANUAL
PLACEMENT FOR ALL ASSEMBLIES WITH THE -LC OPTION.

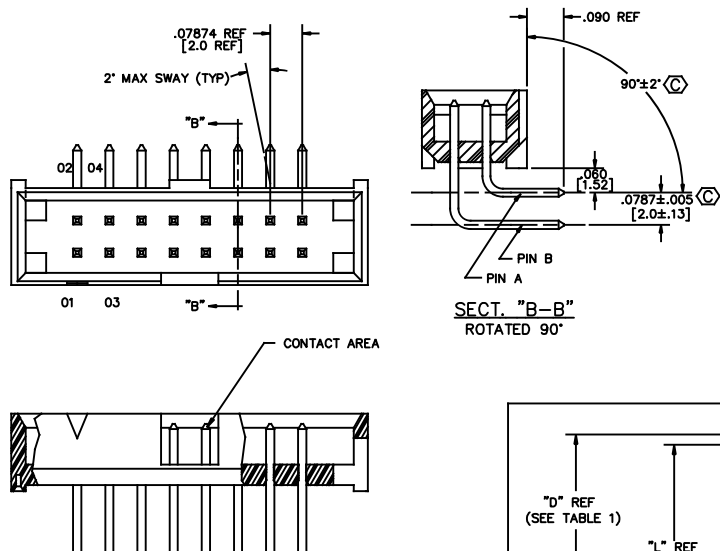
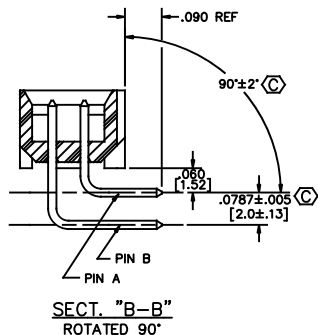
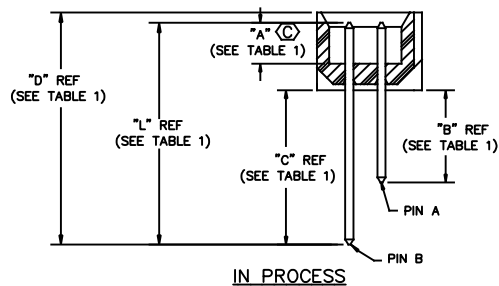


FIG. 2

-RA: RIGHT ANGLE

DIFFERENT AS SHOWN OTHERWISE SAME AS FIG. 1

SECT. "B-B"
ROTATED 90°

IN PROCESS

TABLE 1

	LEAD STYLE	"A" REF	"B" REF	"C" REF	PIN A	"L" REF TERMINAL LENGTH	"D" REF	PIN B	"L" REF TERMINAL LENGTH	"D" REF
THROUGH HOLE (SEE FIG. 1)	-01	.100 [2.54]	.092 [2.3]	N/A	T-1S13-04-XX-2	.255 [6.48]	.280 [7.11]	N/A	.255 [6.48]	N/A
	-02	.120 [3.05]	.117 [3.0]	N/A	T-1S13-07-XX-2	.302 [7.67]	.307 [7.80]	N/A	.302 [7.67]	N/A
RIGHT ANGLE (SEE FIG. 2)	-01	.100 [2.5]	.232 [5.9]	.390 [9.9]	T-1S13-05-XX-2	.397 [10.08]	.422 [10.71]	T-1S13-06-X-2	.555 [14.10] REF	.580 [14.73]
	-02	.120 [3.0]	.228 [5.8]	.386 [9.8]	T-1S13-19-XX-2	.413 [10.49]	.438 [11.13]	T-1S13-22-X-2	.571 [1.50] REF	.576 [14.63]
SURFACE MOUNT (SEE FIG. 3)	-01	.100 [2.54]	.172 [4.4]	N/A	T-1S13-07-XX-2	.302 [7.67]	.327 [8.31]	N/A	SEE TABLE 2	N/A
	-02	.120 [3.05]	.173 [4.4]	N/A	T-1S13-20-XX-2	.323 [8.20]	.328 [8.33]	N/A	SEE TABLE 2	N/A

PLOT SCALE: 1=.25

MATERIAL:
BODY: LCP
COLOR: BLACKTERMINAL:
PHOSPHOR BRONZE

samtec

520 PARK EAST BLVD. NEW ALBANY, INDIANA 47150
PHONE (812) 944-6733 P.O. BOX 1147
CODE 55322

MADE BY: KOLB 1-28-92

STMM-1XX-XX-XX-D-XX-XX
SHEET 1 OF 3

* PROPRIETARY NOTE *

THIS DOCUMENT CONTAINS CONFIDENTIAL AND
PROPRIETARY INFORMATION AND ALL DESIGN,
MANUFACTURING, REPRODUCTION, USE, PATENT
RIGHTS AND SALES RIGHTS ARE EXPRESSLY
RESERVED BY SAMTEC, INC. THIS DOCUMENT
SHALL NOT BE DISCLOSED, IN WHOLE OR PART
TO ANY UNAUTHORIZED PERSON OR ENTITY
FOR REPRODUCTION, TRANSMISSION, OR
INCORPORATION IN ANY OTHER PROJECT IN ANY
MANNER WITHOUT THE EXPRESS WRITTEN
CONSENT OF SAMTEC, INC.

Mouser Electronics

Authorized Distributor

Click to View Pricing, Inventory, Delivery & Lifecycle Information:

[Samtec:](#)

[STMM-108-01-G-D-SM-TR](#) [STMM-120-01-G-D-RA-20](#) [STMM-110-02-G-D-SM-LC-TR](#) [STMM-103-02-G-D-SM-TR](#)
[STMM-125-02-G-D-SM-LC-TR](#) [STMM-105-01-G-D-SM-K](#) [STMM-120-02-F-D-SM-K-TR](#)