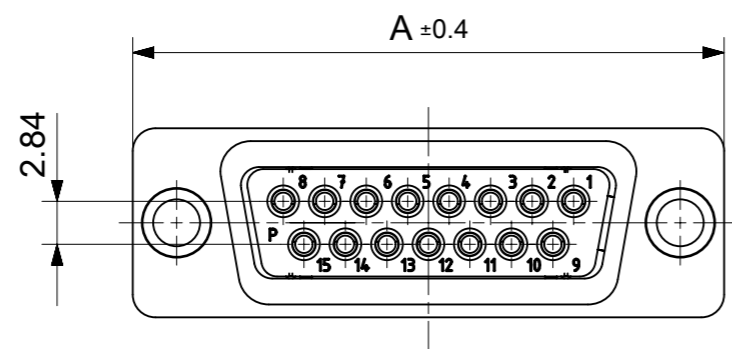
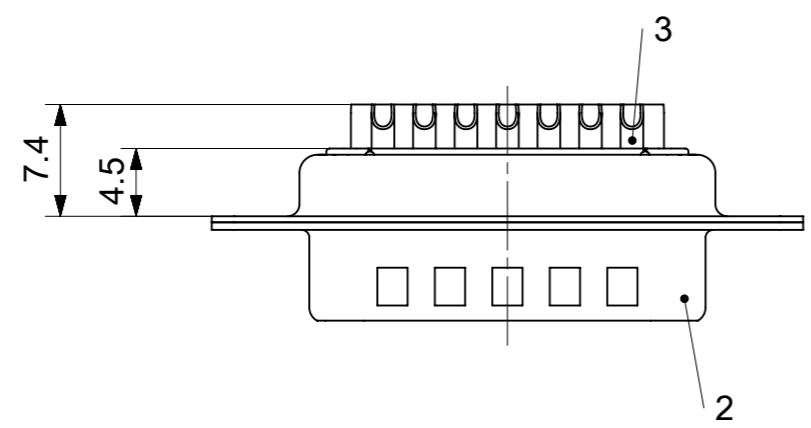
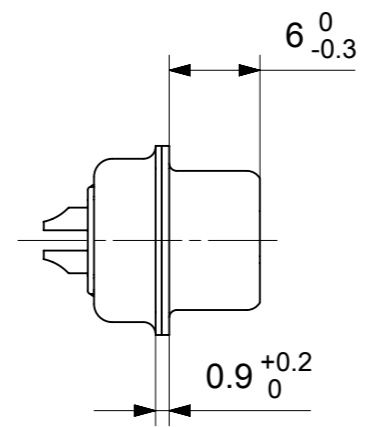
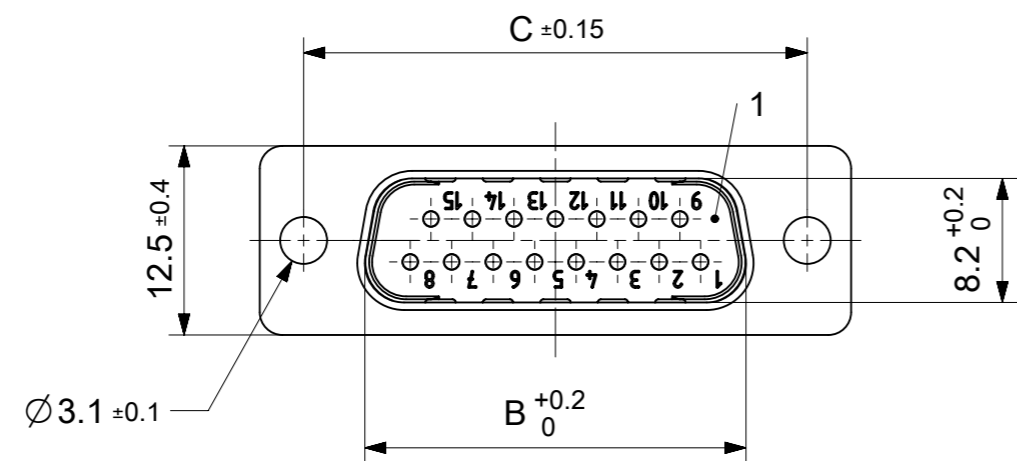


RoHS compliant
by exemption



FCT Part number:

Fxx*1)P0y*2)

e.g. F15P0G1

*1) xx No. of contacts 09, 15, 25 or 37

*2) y for performance classes 1, 2 or 3
(contact cycle for G1/G2/G3 = 500/200/50)

Material Number	xx*1)	y*2)	A[mm]	B[mm]	C[mm]
1727040075	09	G1	30.8	16.9	25
1727040160		G2			
1727040063	15	G1	39.1	25.2	33.3
1727040166		G2			
1727040067	25	G1	53	38.9	47.04
1727040170		G2			
1731090070	37	G1	69.3	55.3	63.5
1731090081		G2			

3	xx	Signal contact	P0 / Brass	G1 / G2 / AWG 20
2	1	Shell	Steel	tin plated
1	1	Insulator	PBT (-55°C to +125°C) acc. UL94V-0	white
No.	Pc.	Part	Type Description/Material	Surface plating/ Color/Class

MEASUREMENTS WITHOUT TOLERANCE ACC TO ISO 2768-m

REPLACEMENT FOR DOCUMENT NUMBER: FxxP0Gy

FUNCTIONAL SYMBOLS	THIS DRAWING CONTAINS INFORMATION THAT IS PROPRIETARY TO MOLEX ELECTRONIC TECHNOLOGIES, LLC AND SHOULD NOT BE USED WITHOUT WRITTEN PERMISSION	CURRENT REV DESC:		molex
$\nabla_A = 0$ $\nabla_E = 0$ $\nabla_V = 0$	DIMENSION UNITS: mm SCALE: 2:1 GENERAL TOLERANCES (UNLESS SPECIFIED) ANGULAR TOL ± °	EC NO: 712973 DRWN: SKANDB 2022/01/13 CHK'D: MTEUBEL 2022/07/12 APPR: MTEUBEL 2022/07/12	FCT D-SUB MINIATURE CONNECTOR	
DIVISIONAL SYMBOLS	4 PLACES ± 3 PLACES ± 2 PLACES ± 1 PLACE ± 0 PLACES ±	INITIAL REVISION: DRWN: SKANDB 2022/01/13 APPR: MTEUBEL 2022/07/12	PRODUCT CUSTOMER DRAWING	
DRAFT WHERE APPLICABLE MUST REMAIN WITHIN DIMENSIONS		FIRST ANGLE PROJECTION	DRAWING	DOCUMENT NUMBER
			SERIES	DOC TYPE
			MATERIAL NUMBER	DOC PART
			CUSTOMER	REVISION
			SEE TABLE	1727040075
			GENERAL MARKET	PSD 000 A
			A3-SIZE	172704
			SHEET NUMBER	1 OF 1