



Part Number : [1731120290](#)

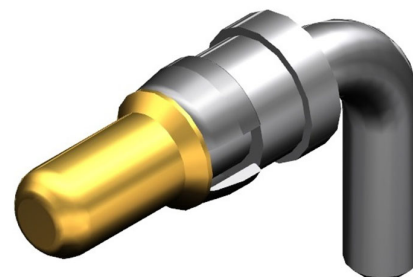
Product Description : FCT High Power Contact, Male, Right-Angle, PCB Through Hole, 0.20µm Gold Mating Plating, 5.00µm Tin Termination Plating, 20.0A, 3.15mm PCB Drilling Diameter

Series Number : 173112

Status : Active

Product Category : D-Sub Contacts

Engineering Number : FMP008P105



Documents & Resources

Drawings


[1731120290_sd.pdf](#)

Specifications

[1731120008-PK-000.pdf](#)

Product Environment Compliance

Compliance

GADSL/IMDS	Not Relevant
China RoHS	
EU ELV	Not Relevant
Low-Halogen Status	Not Reviewed per IEC 61249-2-21
REACH SVHC	Contains Lead per D(2021)10043-DC (17 Jan 2022)
EU RoHS	Compliant with Exemption 6(c) per EU 2015/863

Multiple Part Product Compliance Statements

- Eu RoHS
- REACH SVHC
- Low-Halogen

Multiple Part Industry Compliance Documents

- IPC 1752A Class C

- IPC 1752A Class D
- Molex Product Compliance Declaration
- IEC-62474
- chemSHERPA (xml)

EU RoHS Certificate of Compliance

Part Details

General

Status	Active
Category	D-Sub Contacts
Series	173112
Description	FCT High Power Contact, Male, Right-Angle, PCB Through Hole, 0.20µm Gold Mating Plating, 5.00µm Tin Termination Plating, 20.0A, 3.15mm PCB Drilling Diameter
Contact Type	High Power
Magnetic	Yes
Product Name	FCT Products
Type	Mixed Layout
UPC	889056736534

Electrical

Current - Maximum per Contact	20.0A
-------------------------------	-------

Physical

Durability (mating cycles max)	200
Gender	Male
Material - Contact	Copper Alloy
Material - Plating Mating	Gold over Nickel
Material - Plating Termination	Tin over Nickel
Material - Retaining Clip	Copper Alloy
Net Weight	2.300/g
Orientation	Right-Angle
Packaging Type	Bag
Plating min - Mating	0.200µm

Plating min - Termination	5.000µm
Temperature Range - Operating	-55° to +155°C
Termination Style	Through Hole

Use with Part(s)

Description	Part Number
Use With	FCT Mixed Layout Connectors

Application Tooling

Global

Description	Part Number
FCT Removal Tool for Size 8 Contacts	<u>1731121747</u>