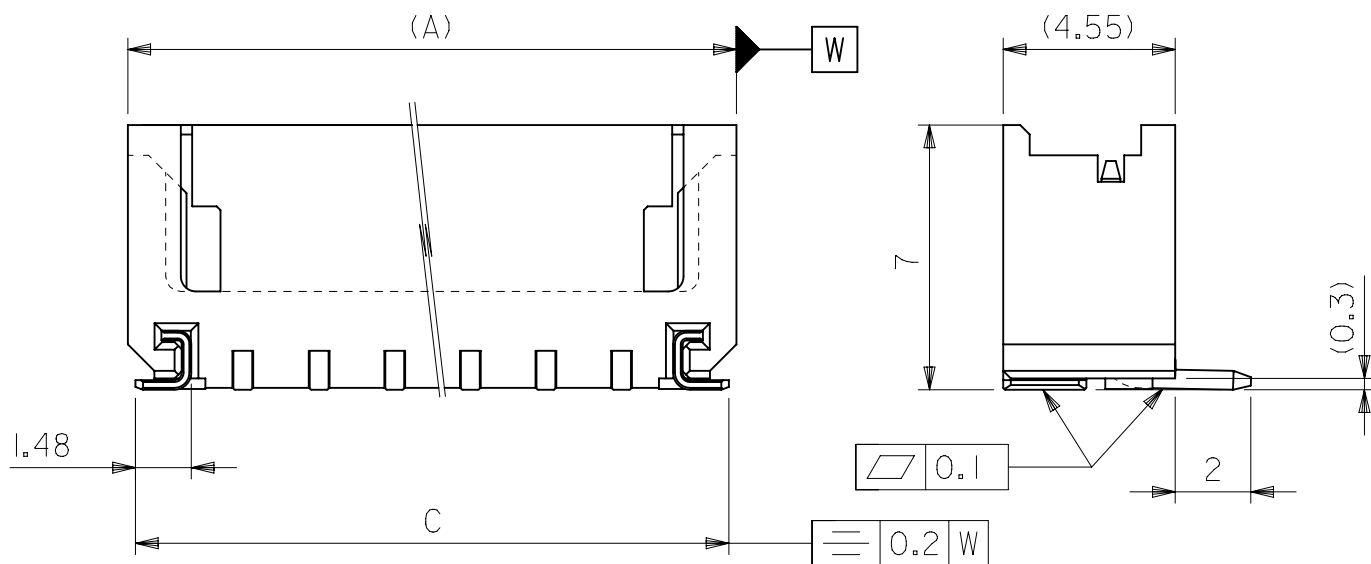


参考基板レイアウト  
RECOMMENDED P.C.BOARD PATTERN DIM.(REF.)



### 注記 NOTES

- 材質  
MATERIAL  
ウェハー : PA (UL94V-0)  
WAFER : PA (UL94V-0)  
ピン : 黄銅 (φ0.5), 銅下地錫メッキ  
PIN : BRASS φ0.5, TIN OVER COPPER PLATING  
金具 : リン青銅 (t=0.25), ニッケル下地錫メッキ  
NAIL : PHOSPHOR BRONZE (t=0.25), TIN OVER NICKEL PLATING
- 嵌合相手 : 51090, 52484 シリーズ  
MATE WITH 51090, 52484 SERIES.
- 本製品は 55460-\*\*10 の鉛フリー品である。  
THIS PRODUCT IS LEAD FREE OF 55460-\*\*10.
- ELV AND RoHS COMPLIANT.

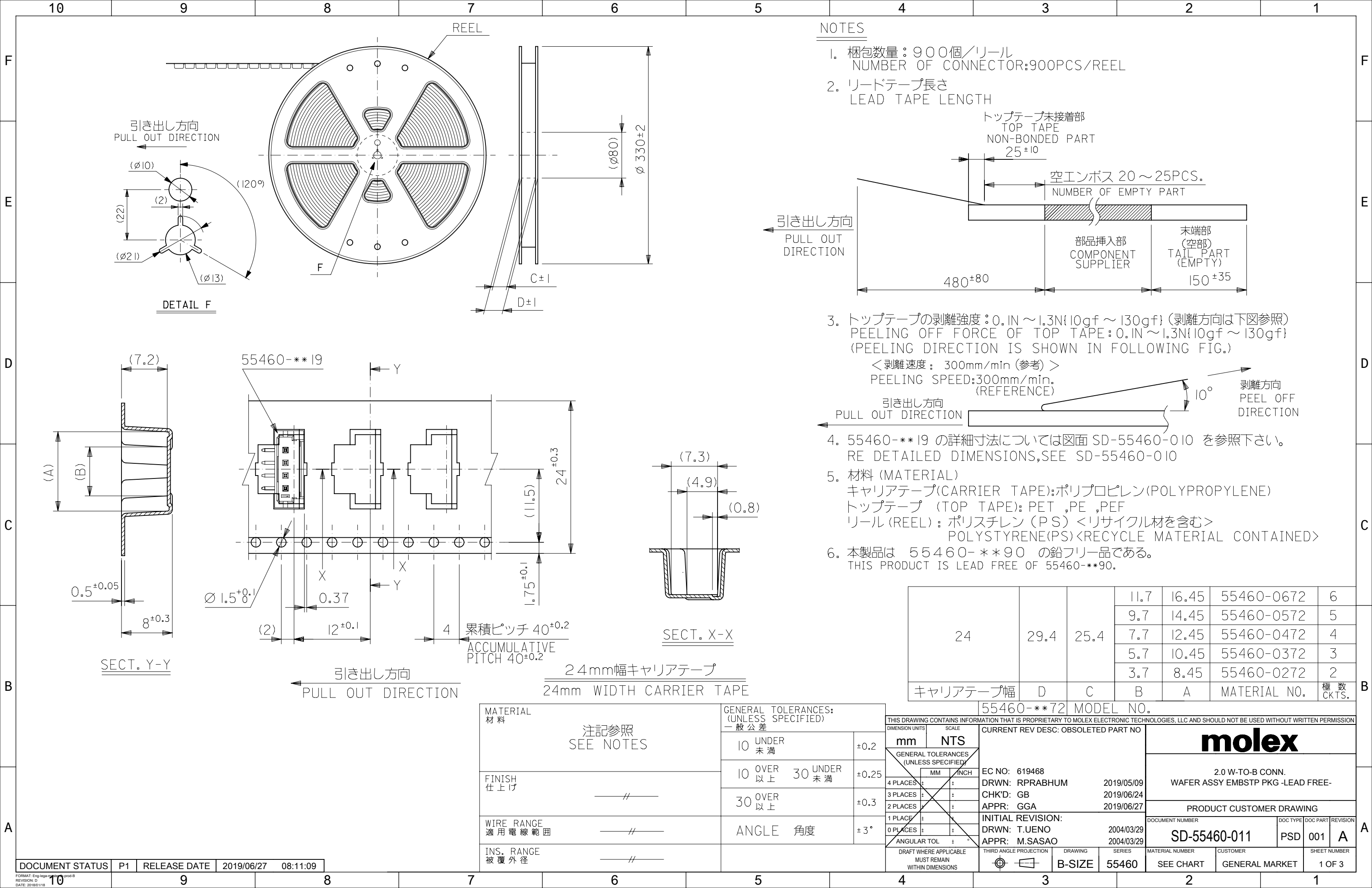
28.1	29.7	24	30.1	55460-1372	13
26.1	27.7	22	28.1	-1272	12
18.1	19.7	14	20.1	-0872	8
8.1	9.7	4	10.1	-0372	3
6.1	7.7	2	8.1	55460-0272	2
D	C	B	A	EMBOSSED PACKAGE オーダー番号 ORDER No.	極数 CKTS.

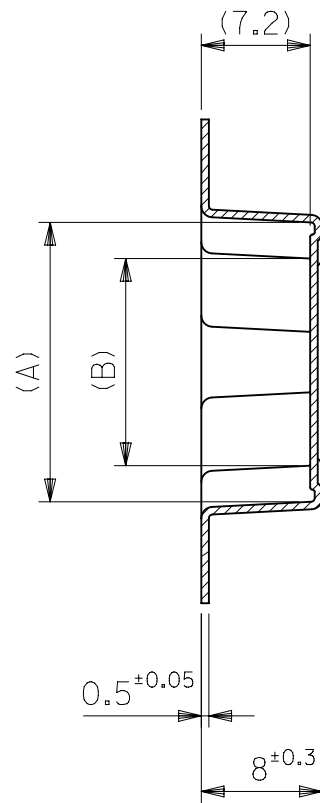
CONNECTOR SERIES NO. 55460-\*\*19

### GENERAL TOLERANCES (UNLESS SPECIFIED)

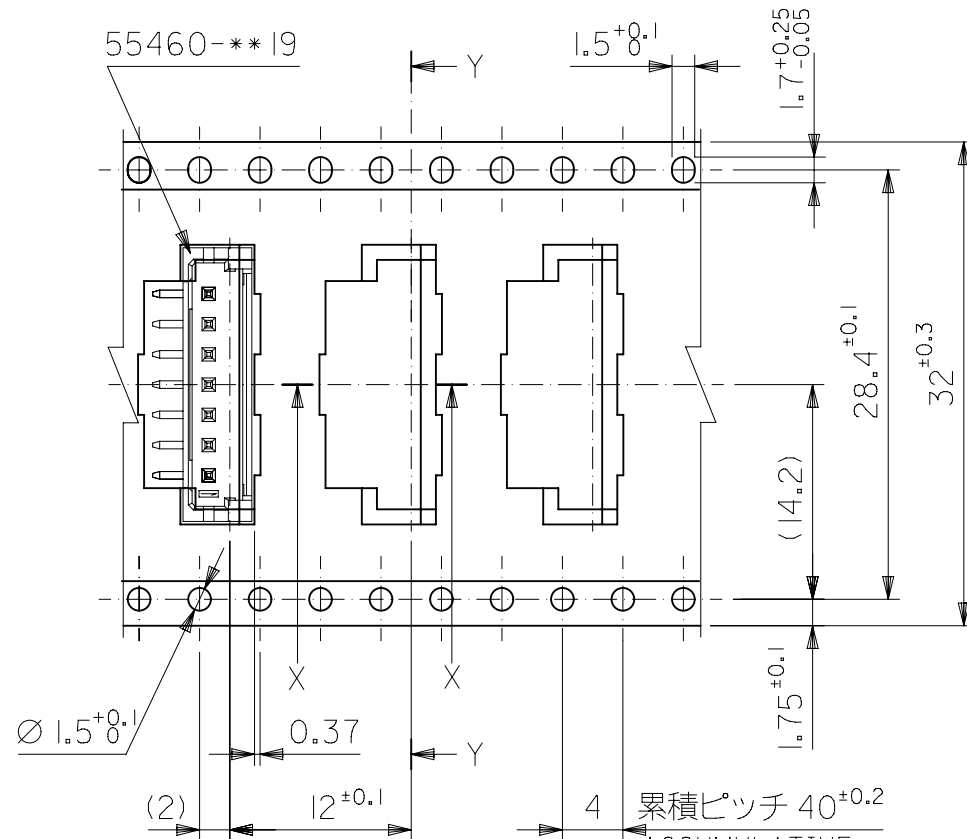
10 <sup>UNDER</sup>	±0.2
10 <sup>OVER</sup> 30 <sup>UNDER</sup>	±0.25
30 <sup>OVER</sup>	±0.3

THIS DRAWING CONTAINS INFORMATION THAT IS PROPRIETARY TO MOLEX ELECTRONIC TECHNOLOGIES, LLC AND SHOULD NOT BE USED WITHOUT WRITTEN PERMISSION		SCALE mm NTS		CURRENT REV DESC: REMOVED OBSOLETE PART NUMBERS AS PER PCN#515181	
GENERAL TOLERANCES (UNLESS SPECIFIED)		mm NTS		EC NO: 794166 DRWN: VISHAH2 CHK'D: GGA APPR: GGA	
4 PLACES ±		±		2024/05/28	
3 PLACES ±		±		2024/08/20	
2 PLACES ±		±		2024/08/20	
1 PLACE ±		±		INITIAL REVISION:	
0 PLACES ±		±		DRWN: T.UENO APPR: YOITO	
ANGULAR TOL ± 3.0°		THIRD ANGLE PROJECTION		2004/03/29 2012/09/20	
DRAFT WHERE APPLICABLE MUST REMAIN WITHIN DIMENSIONS		DRAWING A3-SIZE		SERIES 55460	
DOCUMENT NUMBER SD-55460-010		CUSTOMER GENERAL MARKET		SHEET NUMBER 1 OF 1	



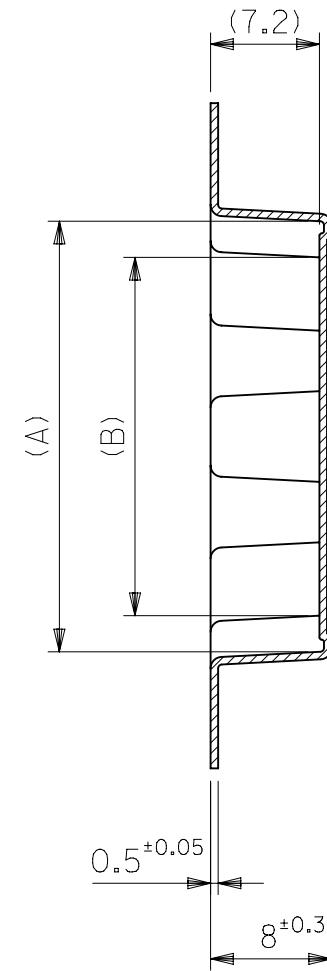


SECT. Y-Y

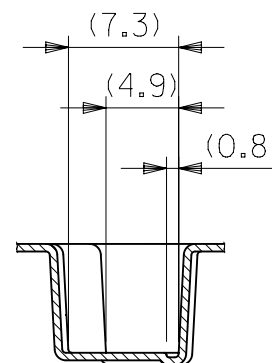


引き出し方向  
PULL OUT DIRECTION

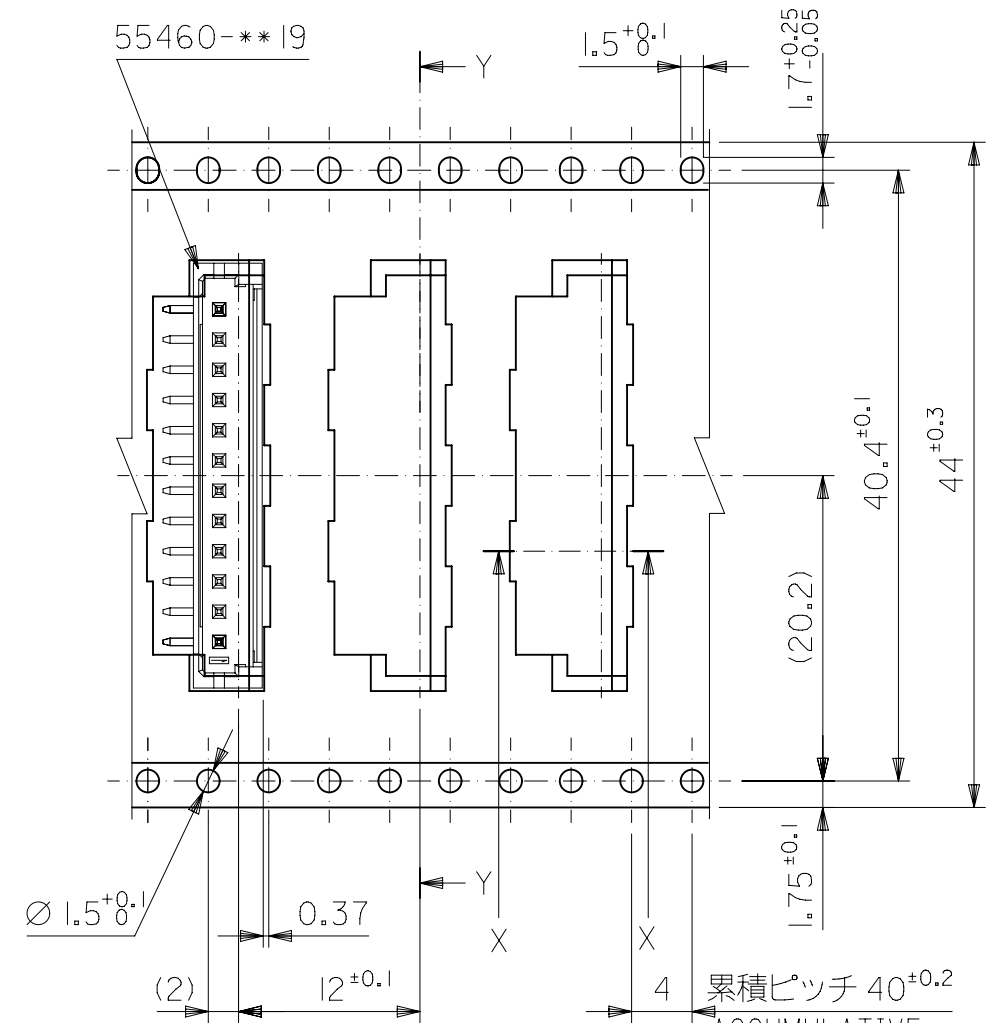
32mm幅キャリアテープ  
32mm WIDTH CARRIER TAPE



SECT. Y-Y



SECT. X-X



引き出し方向  
PULL OUT DIRECTION

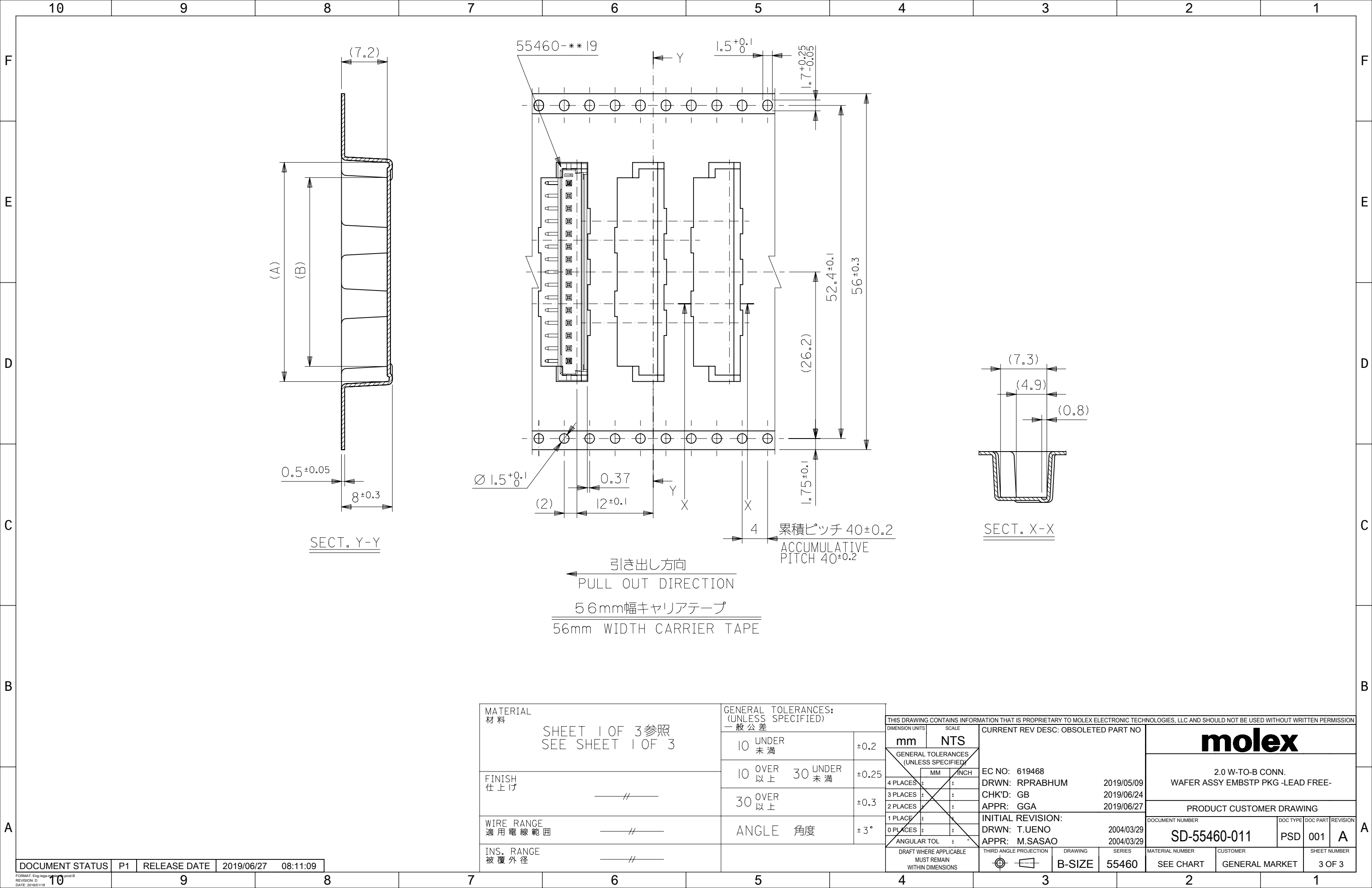
44mm幅キャリアテープ

44	49.4	45.4	25.7	30.45	55460-1372	13
			23.7	28.45	55460-1272	12
			19.7	24.45	55460-1072	10
32	37.4	33.4	15.7	20.45	55460-0872	8
			13.7	18.45	55460-0772	7
キャリアテープ幅	D	C	B	A	MATERIAL NO.	極 数 CKTS.

55460-**72	MODEL NO.
------------	-----------

THIS DRAWING CONTAINS INFORMATION THAT IS PROPRIETARY TO MOLEX ELECTRONIC TECHNOLOGIES, LLC AND SHOULD NOT BE USED WITHOUT WRITTEN PERMISSION																	
DIMENSION UNITS		SCALE		CURRENT REV DESC: OBSOLETE PART NO			<div>molex</div>										
mm NTS																	
<div>GENERAL TOLERANCES (UNLESS SPECIFIED)</div> <div><div></div></div>				EC NO: 619468 DRWN: RPRABHUM 2019/05/09 CHK'D: GB 2019/06/24 APPR: GGA 2019/06/27			2.0 W-TO-B CONN. WAFER ASSY EMBSTP PKG -LEAD FREE-										
4 PLACES ±		MM		INCH		PRODUCT CUSTOMER DRAWING											
3 PLACES ±																	
2 PLACES ±																	
1 PLACE ±																	
0 PLACES ±																	
ANGULAR TOL ± °						DOCUMENT NUMBER			DOC TYPE	DOC PART	REVISION						
DRAFT WHERE APPLICABLE MUST REMAIN WITHIN DIMENSIONS						THIRD ANGLE PROJECTION		DRAWING		SERIES		SD-55460-011		PSD	001	A	
												MATERIAL NUMBER		CUSTOMER		SHEET NUMBER	
								B-SIZE		55460		SEE CHART		GENERAL MARKET		2 OF 3	

DOCUMENT STATUS	P1	RELEASE DATE	2019/06/27	08:11:09
-----------------	----	--------------	------------	----------



MATERIAL 材料	SHEET 1 OF 3 参照 SEE SHEET 1 OF 3		GENERAL TOLERANCES: (UNLESS SPECIFIED) 一般公差	
	10 UNDER 未満	±0.2	10 OVER 以上	30 UNDER 未満
FINISH 仕上げ	//		±0.25	30 OVER 以上
WIRE RANGE 適用電線範囲	//		±0.3	ANGLE 角度
INS. RANGE 被覆外径	//		±3°	

THIS DRAWING CONTAINS INFORMATION THAT IS PROPRIETARY TO MOLEX ELECTRONIC TECHNOLOGIES, LLC AND SHOULD NOT BE USED WITHOUT WRITTEN PERMISSION															
DIMENSION UNITS		SCALE		CURRENT REV DESC: OBSOLETE PART NO			<div><div>molex</div><div>2.0 W-TO-B CONN. WAFER ASSY EMBSTP PKG -LEAD FREE-</div></div>								
mm		NTS													
<div><div>GENERAL TOLERANCES (UNLESS SPECIFIED)</div><div><div>MM</div><div>INCH</div></div><div><div>4 PLACES</div><div>±</div><div>±</div></div><div><div>3 PLACES</div><div>±</div><div>±</div></div><div><div>2 PLACES</div><div>±</div><div>±</div></div><div><div>1 PLACE</div><div>±</div><div>±</div></div><div><div>0 PLACES</div><div>±</div><div>±</div></div><div><div>ANGULAR TOL</div><div>±</div><div>°</div></div></div>				EC NO: 619468			2019/05/09								
				DRWN: RPRABHUM			2019/06/24								
				CHK'D: GB			2019/06/27								
				APPR: GGA											
				INITIAL REVISION:											
				DRWN: T.UENO			2004/03/29								
				APPR: M.SASAO			2004/03/29								
				DRAFT WHERE APPLICABLE MUST REMAIN WITHIN DIMENSIONS				THIRD ANGLE PROJECTION		DRAWING		SERIES		MATERIAL NUMBER	
		B-SIZE						55460		SEE CHART		GENERAL MARKET		3 OF 3	
				DOCUMENT NUMBER				DOC TYPE		DOC PART		REVISION			
				SD-55460-011				PSD		001		A			

molex			
2.0 W-TO-B CONN. WAFER ASSY EMBSTP PKG -LEAD FREE-			
PRODUCT CUSTOMER DRAWING			
DOCUMENT NUMBER	DOC TYPE	DOC PART	REVISION
SD-55460-011	PSD	001	A