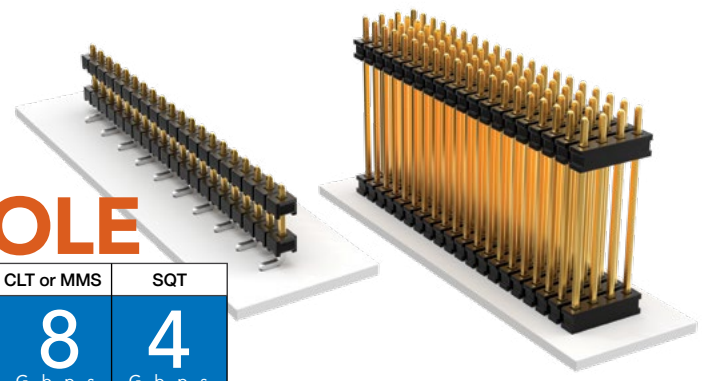


# SMT & THROUGH-HOLE BOARD STACKERS

(2.00 mm) .0787" PITCH • TW SERIES

CLT or MMS	SQT
8	4
G b p s	G b p s



**TW**  
**Board Mates:**  
 CLT, SQT, SQW, ESQT,  
 TLE, SMM, MMS

**Cable Mates:**  
 TCS D

## SPECIFICATIONS

**Insulator Material:**  
 Black Liquid Crystal Polymer  
**Terminal Material:**  
 Phosphor Bronze  
**Plating:**  
 Sn or Au over  
 50 μ" (1.27 μm) Ni  
**Current Rating:**  
 TW-SM = 4.9 A per pin  
 (2 pins powered)  
 TW-TH = 5.2 A per pin  
 (2 pins powered)  
**Operating Temp Range:**  
 -55 °C to +105 °C with Tin;  
 -55 °C to +125 °C with Gold

## PROCESSING

**Lead-Free Solderable:**  
 Yes  
**SMT Lead Coplanarity:**  
 (0.15 mm) .006" max\*  
 \*(.004" stencil solution  
 may be available; contact  
 ipg@samtec.com)

## ALSO AVAILABLE

MOQ Required

Other Platings  
 End shrouds with or  
 without guide post

**Notes:**  
 For added mechanical  
 stability, Samtec  
 recommends  
 mechanical board  
 spacers be  
 used in applications  
 with gold or  
 selective gold  
 plated connectors.  
 Contact ipg@samtec.com  
 for more information.

This Series is non-standard,  
 non-returnable.

TW	NO. PINS PER ROW	LEAD STYLE	PLATING OPTION	ROW OPTION	STACKER HEIGHT	SM	OTHER OPTION
----	------------------	------------	----------------	------------	----------------	----	--------------

02  
thru  
36

Specify  
LEAD  
STYLE  
from  
chart

-F  
= Gold flash  
on post,  
Matte Tin  
on tail

-S  
= Single  
Row

-D  
= Double  
Row

-"XXX"  
= Stacker  
Height  
in inches  
(0.13 mm)  
.005"  
increments

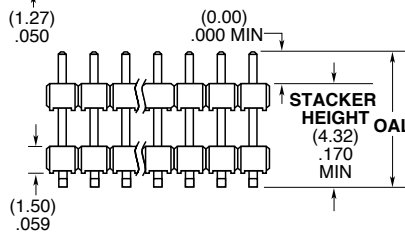
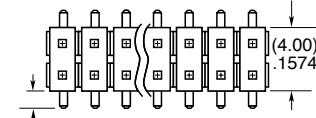
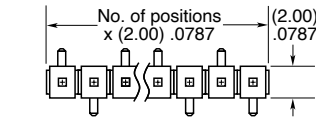
Example:  
-250  
= (6.35 mm)  
.250"

-"XXX"  
= Polarized Position

-A  
= Alignment Pin  
(Metal or plastic  
at Samtec discretion)  
(4.83 mm) .190" min.  
board space  
(-D only)

-P  
= Pick & Place Pad  
(1.91 mm) .075" min.  
post height  
(04-36 only)

-"X"R  
Specify "T" for  
Tape & Reel  
Specify "F" for  
Full Reel Tape & Reel  
(must order max.  
quantity per reel;  
contact Samtec for  
quantity breaks)  
(-07 lead style N/A)  
(-06 lead style with  
-P option N/A  
as standard)

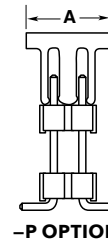
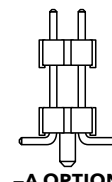


-L  
= 10 μ" (0.25 μm)  
Gold on post,  
Matte Tin on tail

-T  
= Matte Tin

ROW OPTION	A
-S	(5.08) .200
-D	(6.35) .250

LEAD STYLE	OAL
-02	(7.85) .309
-03	(11.86) .467
-04	(12.37) .487
-06	(15.37) .605
-07	(17.35) .683
-09	(9.86) .388



TW	NO. PINS PER ROW	LEAD STYLE	PLATING OPTION	ROW OPTION	STACKER HEIGHT	TAIL SPEC
----	------------------	------------	----------------	------------	----------------	-----------

02 thru 50

Specify  
LEAD  
STYLE  
from  
chart

-F  
= Gold flash  
on post,  
Matte Tin  
on tail

-S  
= Single Row

-D  
= Double Row

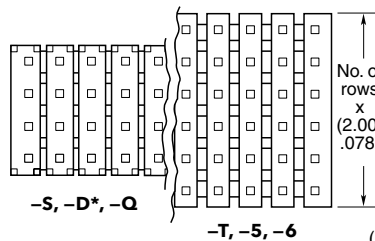
-"XXX"  
= Stacker Height  
in inches  
(0.13 mm) .005"  
increments

Example: -250  
= (6.35 mm)  
.250"

-"XXX"  
= Tail Length  
in inches  
(0.13 mm) .005"  
increments

Example: -150  
= (3.81 mm)  
.150"

-"XXX"  
= Polarized  
Position  
(Specify  
position to  
be removed)



-L  
= 10 μ" (0.25 μm)  
Gold on post,  
Matte Tin on tail

-T  
= Matte Tin

-T  
= Triple Row

-Q  
= Four Row

-5  
= Five Row

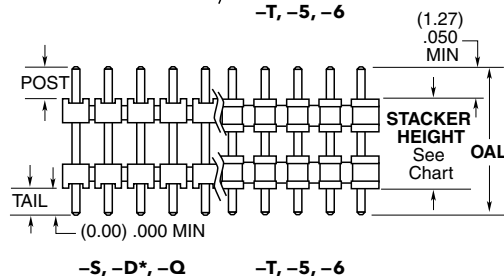
-6  
= Six Row

LEAD STYLE	OAL
-01	(8.20) .323
-02	(9.60) .377
-03	(13.60) .535
-04	(14.10) .555
-05	(15.10) .594
-06	(17.10) .673
-07	(19.10) .751
-08*	(21.10) .830
-09	(11.60) .456
-10	(15.60) .614
-11	(10.08) .397
-12*	(28.19) 1.110

ROW OPTION	STACKER HEIGHT
-S, -D*, -Q	(3.05) .120 MIN
-T, -5, -6	(4.06) .160 MIN

\*-D with stacker height  
 greater than (4.06 mm) .160"  
 will not have standoffs.

\*Style -08 & -12 = S & D only



# Mouser Electronics

Authorized Distributor

Click to View Pricing, Inventory, Delivery & Lifecycle Information:

[Samtec:](#)

[TW-11-12-G-D-660-150](#) [TW-27-07-G-D-415-165](#) [TW-06-09-G-T-220-100](#) [TW-20-05-G-D-160-090](#) [TW-40-10-L-D-374-102](#) [TW-10-03-S-S-230-110](#) [TW-30-03-G-Q-165-100](#) [TW-10-03-S-Q-255-150](#) [TW-13-07-G-D-450-125](#) [TW-06-12-G-D-475-220](#) [TW-08-08-G-D-370-195](#) [TW-04-06-G-D-395-120](#) [TW-03-03-G-D-120-100](#) [TW-02-06-G-D-395-120](#) [TW-03-07-G-D-390-110](#) [TW-04-03-G-S-250-090](#) [TW-02-03-T-D-185-075](#) [TW-02-09-T-S-215-121](#) [TW-02-03-T-S-315-075](#) [TW-03-05-L-D-315-090](#) [TW-04-02-G-D-180-100](#) [TW-05-02-G-S-125-050](#) [TW-04-07-G-D-520-080](#) [TW-03-02-T-S-120-125](#) [TW-03-09-G-D-155-115](#) [TW-05-05-L-D-335-100](#) [TW-05-06-S-T-452-080](#) [TW-05-09-T-S-255-100](#) [TW-05-12-G-D-670-190](#) [TW-08-09-L-D-200-090](#) [TW-08-10-L-D-338-105](#) [TW-09-06-G-D-260-205](#) [TW-06-06-T-S-455-109](#) [TW-06-09-T-D-204-109](#) [TW-05-03-L-D-300-090](#) [TW-06-05-L-D-435-100](#) [TW-07-07-G-D-461-090](#) [TW-10-07-G-D-375-188](#) [TW-10-05-T-D-365-105](#) [TW-08-03-L-D-220-120](#) [TW-08-02-T-D-185-115-016](#) [TW-08-03-L-S-265-090](#) [TW-11-06-T-S-425-090](#) [TW-06-12-G-D-590-100](#) [TW-08-12-S-D-600-150](#) [TW-13-09-T-S-256-094](#) [TW-10-07-T-D-490-125](#) [TW-12-02-T-D-180-100](#) [TW-20-12-G-D-590-135](#) [TW-08-02-T-S-120-130](#) [TW-10-12-L-D-400-280](#) [TW-13-12-S-D-700-145](#) [TW-11-07-G-S-135-135](#) [TW-12-03-L-D-231-118](#) [TW-19-08-S-S-310-090](#) [TW-10-03-G-D-236-157](#) [TW-10-06-G-D-280-270](#) [TW-18-02-L-D-142-120](#) [TW-14-03-L-D-170-135](#) [TW-16-02-L-S-160-100](#) [TW-20-09-L-D-250-103](#) [TW-12-08-G-D-380-120](#) [TW-15-06-G-D-275-200](#) [TW-20-04-T-D-300-125](#) [TW-24-05-G-D-340-130](#) [TW-02-02-LM-S-230-075](#) [TW-02-02-T-D-189-094](#) [TW-03-07-T-D-470-150](#) [TW-03-07-T-D-158-110](#) [TW-02-01-T-S-134-094](#) [TW-03-03-L-D-197-142](#) [TW-03-03-S-D-195-120](#) [TW-04-02-L-D-120-080](#) [TW-04-02-L-D-120-100](#) [TW-02-02-G-S-190-100](#) [TW-04-03-L-S-222-200](#) [TW-02-05-G-D-315-100](#) [TW-04-03-L-D-290-090](#) [TW-04-05-L-D-320-100](#) [TW-02-06-T-S-254-056](#) [TW-04-01-L-D-120-090](#) [TW-04-02-L-T-160-065](#) [TW-04-03-L-D-235-150](#) [TW-04-09-G-D-220-090](#) [TW-04-10-G-D-375-080](#) [TW-05-02-L-S-153-111](#) [TW-05-03-L-S-222-200](#) [TW-05-06-G-S-325-100](#) [TW-03-12-G-D-625-100](#) [TW-06-10-L-D-415-100](#) [TW-03-09-T-D-143-125](#) [TW-05-09-G-D-130-160](#) [TW-06-03-G-S-335-055](#) [TW-03-10-G-D-360-140](#) [TW-05-05-G-D-290-150](#) [TW-08-04-T-D-315-070](#) [TW-05-06-T-S-510-080](#) [TW-07-02-L-D-125-090](#) [TW-07-06-G-D-455-100](#) [TW-08-03-T-S-345-095](#)