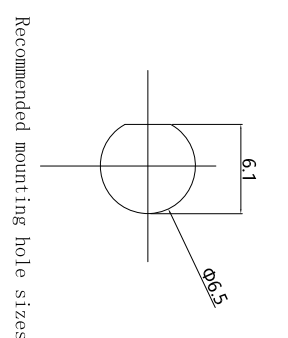
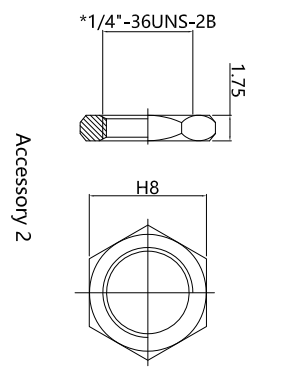
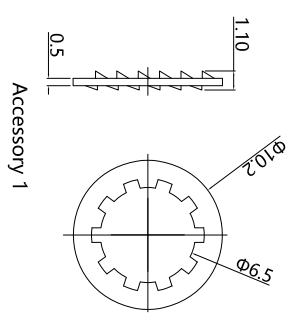
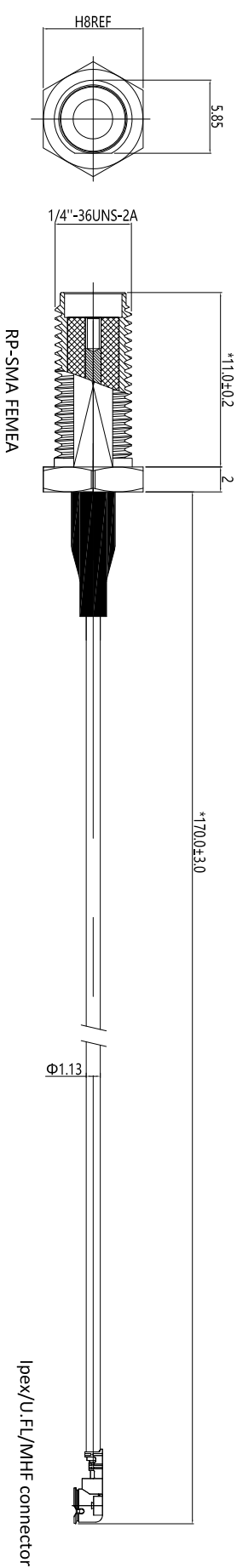


1	2	3	4	5	6	7	8
REV.	DESCRIPTION	APPD.	DATE				
A	INITIAL RELEASED	Chen	2021/07/20				



Recommended mounting hole sizes

IpeX/U.FL/MHF connector

TYPICAL SPECIFICATIONS

- 1.0.ELECTRICAL
  - 1.1.FREQUENCY RANGE: DC-6GHZ
  - 1.2.NOMINAL IMPEDANCE: 50 Ohm
  - 1.3.WORKING VOLTAGE:335V MAX.
  - 1.4.PROOF VOLTAGE:750V
  - 1.5.VSWR:1.4 MAX.
- 2.0.MECHANICAL
  - 2.1.TORSIONAL:15IN-1BS MIN.
  - 2.2.PLUGGABLE:500
- 3.0.ENVIRONMENTAL
  - 3.1.OPERATING TEMPERATURE RANGE: -55°C TO +125°C
  - 3.2.SALT SPRAY:48HOURS
  - 3.3.ROHS COMPLIANT
  - 3.4.REACH COMPLIANT

DIMENSIONS ARE IN MILLIMETERS UNLESS OTHERWISE SPECIFIED		CUS P/N: Adapter cable		 <b>MyAntenna</b> TITLE: Adapter cable DWG NO.:		
TOLERANCES		PART NO.: M00-0101680R0A				
ANGLES = ±3°		APPD:				
UP TO 6 = ±0.1		CHKD:				
6-40 = ±0.2		DR:		SCALE	SHEET	REV.
40-120 = ±0.6				1:1	1/1	V01
120-315 = ±1.0						
ABOVE 315 = ±1.6						