



# CNX C Series

## Build Your Own Indicator

### for Use With T-1 3/4 (5mm) LEDs



CNX C Series features modular panel mount indicator assemblies and mounting hardware and require no tools for assembly



#### Applications

- Industrial
- Transportation
- Emergency Applications
- Maritime, Oil and Gas Industry
- Automation and Control
- People Movers
- Instrument Panels
- Gaming and Vending Machines
- Outdoor Applications

#### Key Features

- For panel hole diameter: 0.281" (7.14mm)
- Choice of 4 different types of lenses and a round panel clip
- Terminations available: stripped end, locking connector, plain connector, and with terminals
- Eliminates the need for soldering or crimping wires
- Available wire gauge: 22 AWG or 24 AWG
- Available in 7 standard wire lengths, from 4" to 30"
- Choice of 2 different wires colors: White/Black or Red/Black
- Panel thickness ranges from 0.030" (0.762mm) to .125" (3.175mm)
- 5mm (T-1 3/4) LED with or without flange, lens, clip and spacer needs to be ordered separately
- Spacer SPC\_060 made of EPDM rubber is optional and designed to seal against water, oil, air and dust
- For additional options please contact our technical sales department
- U.S. and foreign patent issued
- RoHS and REACH Compliant



## Ordering Data

Series	LED Termination	Wire Size	Wire Color	Wire Length
CNX C	X	4	1	12
	X Stripped End	2 22 AWG	1 White-Black	04 4in (101.6mm)
	E Single Row Locking Header	4 24 AWG	2 Red-Black	06 6in (152.4mm)
	G Single Row Plain Header			08 8in (203.2mm)
	A W/Terminals; No Connector			12 12in (304.8mm)
				18 18in (457.2mm)
				24 24in (609.6mm)
				30 30in (762mm)



Example:

**CNX\_C\_X\_4\_1\_12**

Stripped End, 24 AWG Wire Size, White/Black Wire Color, 12 Inch Wire Length

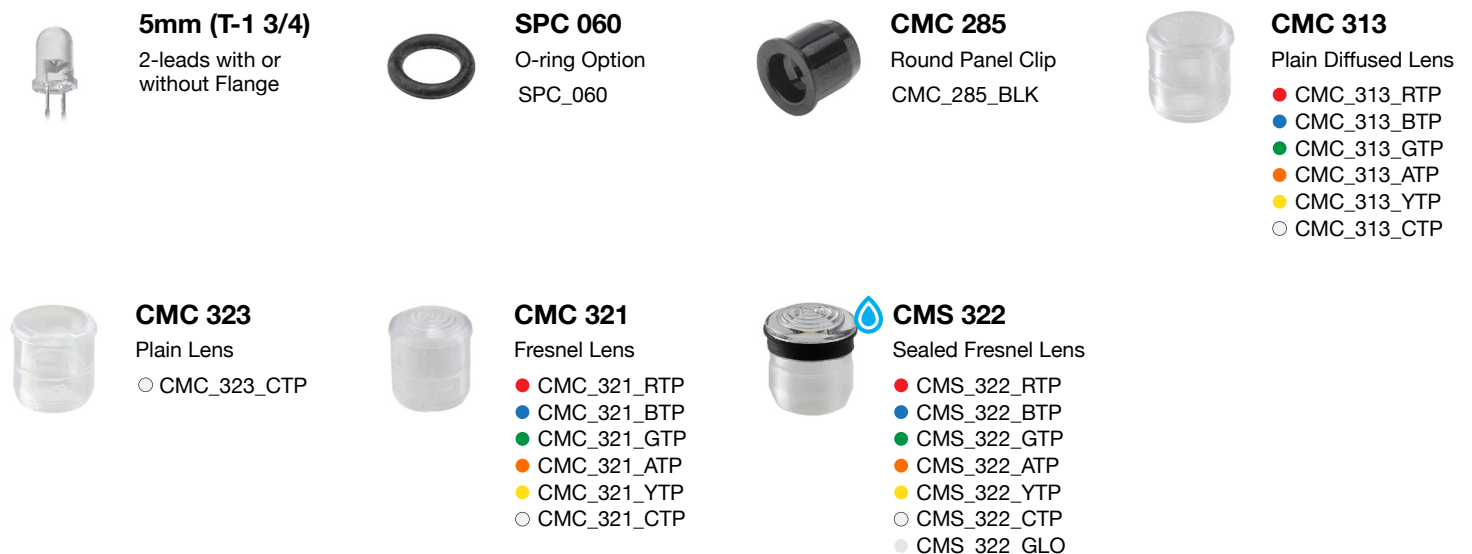
*Shown with 5mm (T-1 3/4) LED and CMS 322 Lens*

**\*Call VCC for additional options**

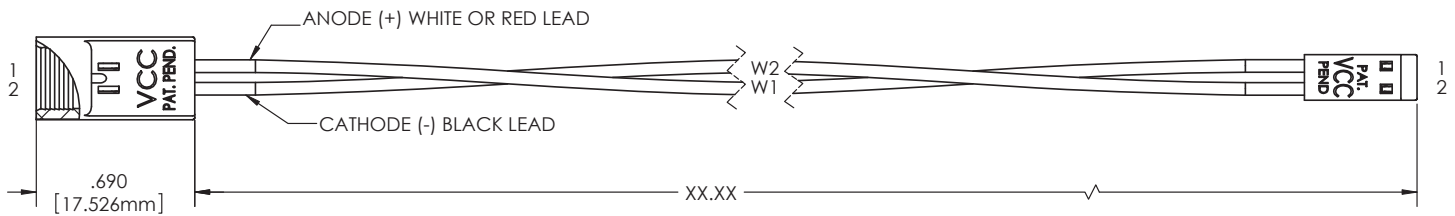
## Terminations



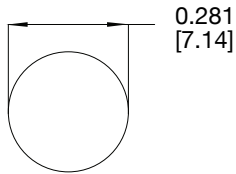
## Accessories (Order Separately)



## Product Dimensions



### Recommended Mounting Hole



#### Notes:

1. All dimensions are in inches [millimeters]
2. Tolerance is  $\pm .500$  [12.7] unless otherwise noted. unless otherwise noted.
3. XX.XX refer to wire length
4. The specifications, characteristics and technical data described in the datasheet are subject to change without prior notice.

## Product Specifications

Materials	
Panel Connector Socket	Polypropylene, UL 94-HB
Head Connector	Polyester, UL 94-V0
Terminals	Phosphor Bronze, Tin Plate
Wire	22 or 24 AWG 1007/1569

Installation Specifications	
Mounting Hole	0.281" (7.14mm)
Panel Thickness	.030" (.762mm) Min - .125" (3.175mm) Max For .030" (.762mm) - .045" (1.143mm) Use 2 SPC_060 Spacer For .050" (1.27mm) - .100" (2.54mm) Use 1 SPC_060 Spacer For .105" (2.67mm) - .125" (3.175mm) No spacer required
LED Lead Length	CMC 285 - .350" $\pm .01$ " (8.89mm $\pm 0.254$ mm) CMC 313, CMC 321, CMC 323, and CMS 322 - .250" $\pm .01$ " (6.35mm $\pm 0.254$ mm)

## Compliances and Approvals



# Mouser Electronics

Authorized Distributor

Click to View Pricing, Inventory, Delivery & Lifecycle Information:

VCC:

[CNX\\_C\\_G\\_4\\_1\\_06](#) [CNX\\_C\\_X\\_4\\_2\\_24](#) [CNX\\_C\\_E\\_2\\_1\\_30](#) [CNX\\_C\\_G\\_4\\_1\\_18](#) [CNX\\_C\\_E\\_4\\_2\\_04](#)  
[CNX\\_C\\_X\\_4\\_2\\_04](#) [CNX\\_C\\_X\\_2\\_1\\_06](#) [CNX\\_C\\_G\\_4\\_1\\_12](#) [CNX\\_C\\_X\\_4\\_2\\_18](#) [CNX\\_C\\_G\\_4\\_1\\_04](#)  
[CNX\\_C\\_G\\_4\\_1\\_08](#)