



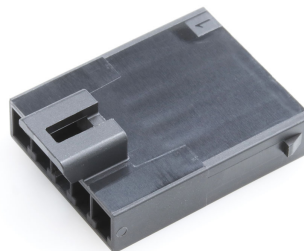
Part Number : [2025693007](#)

Product Description : Ultra-Fit Plug Housing,
3.50mm Pitch, Single Row, 7 Circuits, Black,
Glow-Wire Capable

Series Number : 202569

Status : Active

Product Category : Connector Housings



Documents & Resources

Drawings

[Drawing 2025693007_sd.pdf](#)

[Packaging Design Drawing 2025691000-PK-000.pdf](#)

3D Models and Design Files

[3D Model PDF 2025693007.pdf](#)

[3D Model 2025693007_stp.zip](#)

Specifications

[Application Specification 1723230003-000.pdf](#)

[Product Specification 2169461000-PS-000.pdf](#)

[Test Summary 2169460001-TS-000.pdf](#)

Product Environment Compliance

Compliance

China RoHS	Not Reviewed
EU ELV	Not Reviewed
Low-Halogen Status	Not Reviewed
REACH SVHC	Not Reviewed
EU RoHS	Not Reviewed

[Multiple Part Product Compliance Statements](#)

- Eu RoHS
- REACH SVHC
- Low-Halogen

[Multiple Part Industry Compliance Documents](#)

- IPC 1752A Class C
- IPC 1752A Class D

- Molex Product Compliance Declaration
- IEC-62474
- chemSHERPA (xml)

EU RoHS Certificate of Compliance

Part Details

General

Status	Active
Category	Connector Housings
Series	202569
Description	Ultra-Fit Plug Housing, 3.50mm Pitch, Single Row, 7 Circuits, Black, Glow-Wire Capable
Application	Power, Wire-to-Wire
Product Family	Ultra-Fit Power Connectors
Product Name	Ultra-Fit
UPC	195842150706

Physical

Circuits (maximum)	7
Color - Resin	Black
Gender	Plug
Glow-Wire Capable	Yes
Keying to Mating Part	Yes
Lock to Mating Part	Yes
Material - Resin	Polyamide
Net Weight	2.400/g
Number of Rows	1
Packaging Type	Bag
Panel Mount	No
Pitch - Mating Interface	3.50mm
Pitch - Termination Interface	3.50mm
Polarized to Mating Part	Yes
Temperature Range - Operating	-40° to +105°C, -40° to +120°C

Mates With / Use With

Mates with Part(s)

Description	Part Number
Ultra-Fit Tangless Receptacle Housing, 3.50mm Pitch, Single Row, 7 Circuits, Black, Glow-Wire Capable	<u>1722563107</u>

Use with Part(s)

Description	Part Number
Ultra-Fit Tangless Terminal Position Assurance (TPA), 3.50mm Pitch, 7 Circuits, Natural	<u>/content/molex/molex-dot-com/us/en/products/product-page.html/1722644007.html</u>
Ultra-Fit Male Crimp Terminals	<u>216946</u>