

DO NOT
SCALE FROM
THIS PRINT

TABLE 1		
STYLE	"A"	"B"
-X1	.120 [3.05]	.020 [.51]
-X3	.075 [1.91]	.016 [.41]

TABLE 3 (SEE NOTE 5)	
NO OF POS.	"C"
-05, -07	.080 [2.03]
-10 THRU -50	.305 [7.75]

SFML-1XX-XX-XXX-D-XXX-X-XX

No OF POSITIONS

-05, -07, -08, -10 THRU -50
(PER ROW)

LEAD STYLE

- 01: THROUGH HOLE
(USE C-44-01-XXX, SEE FIG 1, SHT 1)
- 02: SURFACE MOUNT
(USE C-44-02-XXX, SEE FIG 3, SHT 2)
- 03: STRAIGHT MODIFIED
(USE C-44-03-XXX, SEE FIG 1, SHT 1)
- L1: THROUGH HOLE (LOW INSERTION)
(USE C-61-01-XXX, SEE FIG 1, SHT 1)
- L2: SURFACE MOUNT (LOW INSERTION)
(USE C-61-02-XXX, SEE FIG 3, SHT 2)
- L3: STRAIGHT MODIFIED (LOW INSERTION)
(USE C-61-03-XXX, SEE FIG 1, SHT 1)
- T1: THROUGH HOLE (PHOS BRONZE)
(USE C-119-01-XXX, SEE FIG 1, SHT 1)
- T2: SURFACE MOUNT (PHOS BRONZE)
(USE C-119-02-XXX, SEE FIG 3, SHT 2)

PACKAGING

- BLANK: TUBES (SEE NOTE 11)
- TR: TAPE & REEL (SEE NOTES 12 & 13)
- FR: FULL REEL QTY TAPE & REEL
(SEE NOTES 12 & 13)
- (-XR N/A WITH -X1 AND -X3 LEAD STYLE,
SEE FIG 2, SHT 2)

PICK AND PLACE OPTION

- P: PICK & PLACE PAD (SEE FIG 6, SHT 3)
(USE PPP-02) (NOT AVAILABLE IN 5 POS)
- K: POLYIMIDE FILM PAD (SEE FIG 4, SHT 2)
(USE K-DOT-.157-.250-.005)

OPTIONS

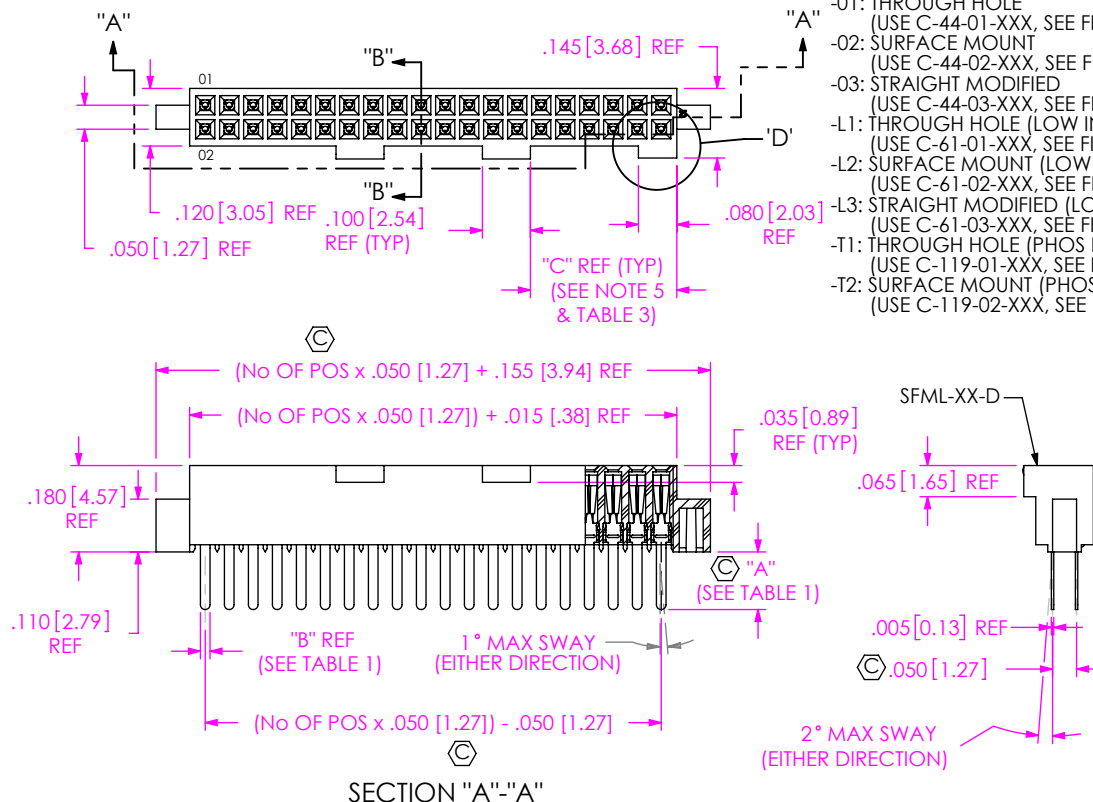
- (LEAVE BLANK FOR STANDARD
AND USE SFML-XX-D)
- A: ALIGNMENT PIN (USE SFML-XX-D-A)
(SEE FIG 5, SHT 3)
- LC: LOCKING CLIP (SEE FIG 7, SHT 3)
(USE (2) LC-05-TM & SFML-XX-D) (SEE NOTE 9)
- SN: SOLDER NAIL (USE SFML-XX-D-SN &
WT-27-01-T) (SEE FIG 8, SHT 4)
(AVAILABLE ON -X2 LEAD STYLES ONLY)
- SN2: SOLDER NAIL FOR .093 BOARD
(USE SFML-XX-D-SN &
WT-27-02-T) (SEE FIG 8, SHT 4)
(ONLY AVAILABLE WITH -02, L2, AND T2 LEAD
STYLE. NOT AVAILABLE WITH -A, -LC OPTIONS)

ROW SPECIFICATION

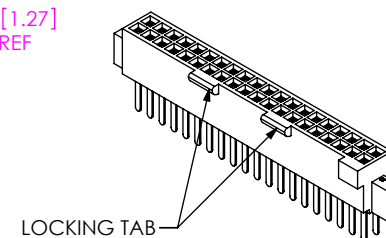
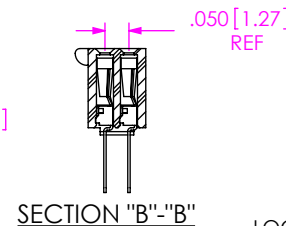
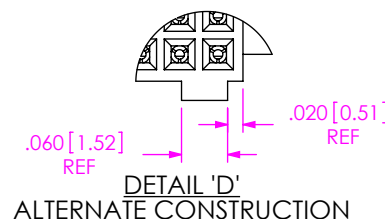
- D: DOUBLE ROW
(USE SFML-XX-D-X)

PLATING SPECIFICATION

- S: 30μ" SELECTIVE GOLD IN CONTACT AREA,
MATTE TIN ON TAIL
- F: 3μ" FLASH SELECTIVE GOLD IN CONTACT AREA,
MATTE TIN ON TAIL
- H: 30μ" HEAVY GOLD IN CONTACT AREA, 3μ" GOLD ON TAIL
- L: 10μ" LIGHT SELECTIVE GOLD IN CONTACT AREA,
MATTE TIN ON TAIL
- STL: 30μ" SELECTIVE GOLD IN CONTACT AREA,
TIN/LEAD (90/10+/-5%) TAIL (ONLY AVAILABLE ON
-02 AND -L2 LEADSTYLES)
- SM: 30μ" SELECTIVE GOLD IN CONTACT AREA,
MATTE TIN ON TAIL
- LM: 10μ" LIGHT SELECTIVE GOLD IN CONTACT AREA,
MATTE TIN ON TAIL
- FM: 3μ" FLASH SELECTIVE GOLD IN CONTACT AREA,
MATTE TIN ON TAIL

FIG 1
THROUGH HOLE/STRAIGHT MODIFIED
(SHOWN: SFML-120-X1-XXX-D)

- NOTES:
1. REPRESENTS A CRITICAL DIMENSION.
 2. COPLANARITY: .004 [.10] FOR POS. 04 THRU 26
.006 [.15] FOR POS. 27 THRU 50
 3. MINIMUM PUSHOUT FORCE: .5 LB.
 4. MAXIMUM ALLOWABLE BOW: .002 INCH/INCH [MM/MM] AFTER ASSEMBLY.
 5. POSITIONS -05, 07 AND -08 WILL HAVE ONLY ONE LOCKING TAB AT DIMENSION SHOWN AND WILL NOT HAVE POLARIZATION NOTCH;
POSITIONS -10 THROUGH -24 WILL HAVE ONLY ONE LOCKING TAB AT DIMENSION SHOWN;
POSITIONS -25 THROUGH -34 WILL HAVE TWO LOCKING TABS AT DIMENSION SHOWN;
POSITIONS -35- THROUGH -50 WILL HAVE THREE LOCKING TABS: TWO AT DIMENSION SHOWN & ONE CENTERED ON INSULATOR.
 6. SEE NOTCH FOR PROPER ORIENTATION.
 7. PINS CAN BE ORIENTED IN ANY DIRECTION; BOTH ROWS MUST FACE SAME WAY.
 8. MAXIMUM PIN HEIGHT VARIATION: .003[0.08] FROM PIN TO PIN AND ROW TO ROW, MUST BE MEASURED BETWEEN ADJACENT PINS.
 9. DUE TO THE HIGH AMOUNT OF INSERTION FORCE NEEDED, THE -LC OPTION IS NOT COMPATIBLE WITH AUTO PLACEMENT. SAMTEC RECOMMENDS MANUAL PLACEMENT FOR ALL ASSEMBLIES WITH THE -LC OPTION."
 10. TUBE PINS WITH NOTCH AND/OR LOCKING TAB TOWARD ARROW. NOTCH NOT AVAILABLE ON -05, -07 AND -08 POSITION PARTS.
 11. TUBES ARE STANDARD PACKAGING.
 12. ORDERS WILL BE PACKAGED ACCORDING TO THE SAMTEC PACKAGING EFFICIENCY STANDARDS (SPES) FOUND ON WWW.SAMTEC.COM.
 13. ATTACH LABEL TO EACH REEL.
 14. LOAD VISION TRAYS WITH PIN #1 OPPOSITE STANDARD - AWAY FROM THE TERMINAL INDICATOR SIDE OF TRAY.

UNLESS OTHERWISE SPECIFIED,
DIMENSIONS ARE IN INCHES.

TOLERANCES ARE:

DECIMALS	ANGLES
.XX: ±.01 [0.3]	2°
.XXX: ±.005 [0.13]	
.XXXX: ±.0020 [0.051]	

PROPRIETARY NOTE

THIS DOCUMENT CONTAINS CONFIDENTIAL AND PROPRIETARY INFORMATION AND ALL DESIGN, MANUFACTURING, REPRODUCTION, USE, PATENT RIGHTS AND SALES RIGHTS ARE EXPRESSLY RESERVED BY SAMTEC, INC. THIS DOCUMENT SHALL NOT BE DISCLOSED, IN WHOLE OR PART, TO ANY UNAUTHORIZED PERSON OR ENTITY NOR REPRODUCED, TRANSFERRED OR INCORPORATED IN ANY OTHER PROJECT IN ANY MANNER WITHOUT THE EXPRESS WRITTEN CONSENT OF SAMTEC, INC.

MATERIAL: DO NOT SCALE DRAWING

SHEET SCALE: 2.5:1

INSULATOR:
VETRA E130i, LCP UL 94 VO
COLOR: BLACK
CONTACT: BeCu
PHOS BRONZE

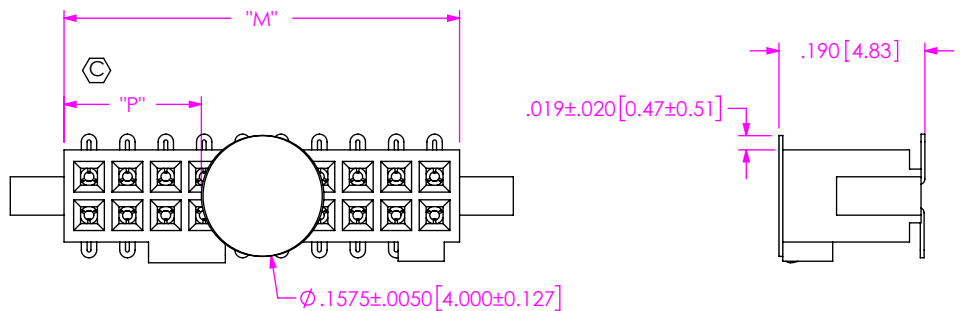
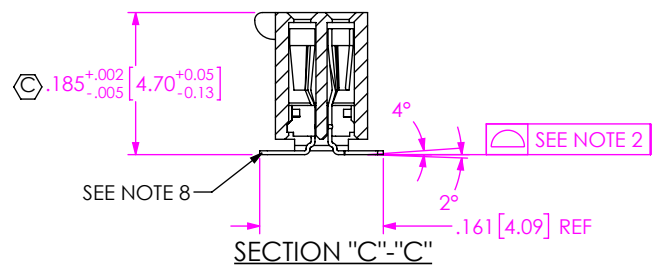
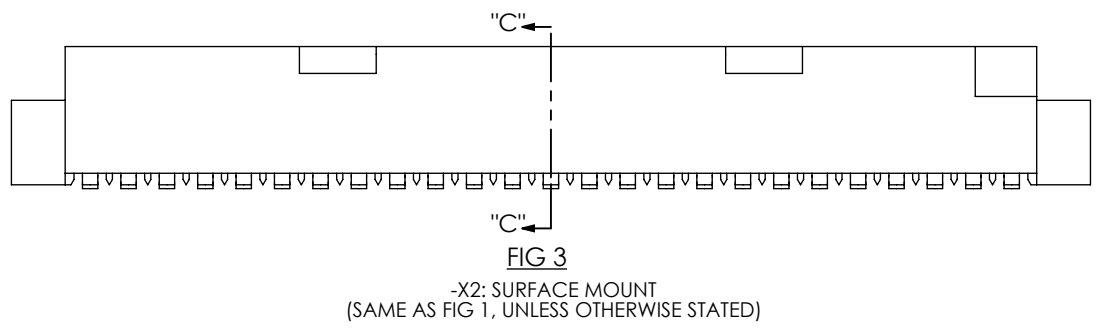
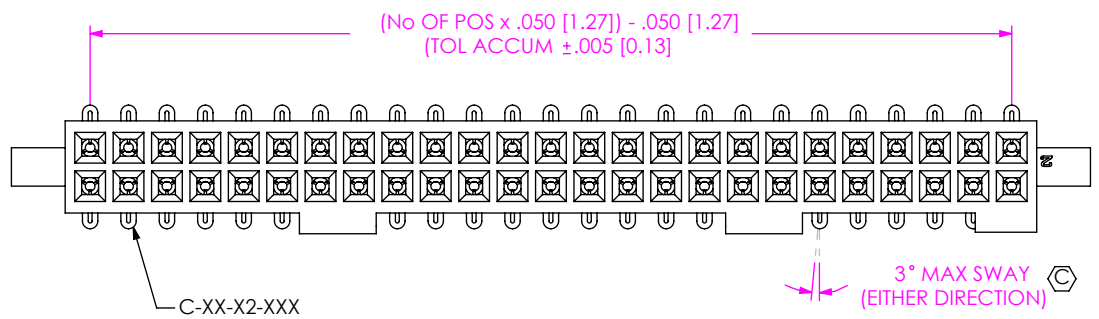
DESCRIPTION:
.050 [1.27] x .050 [1.27] LOCKING SOCKET ASSEMBLY

DWG. NO.

SFML-1XX-XX-XXX-D-XXX-X-XX

BY: BRATCHER 4/19/99

SHEET 1 OF 4



NOTE:
"M" = USED MEASURED DIMENSION (REF)
"P" = {("M" - .1575 [4.000]) / 2} ±.020 [0.51]

FIG 4

-K: POLYIMIDE FILM PAD OPTION
(SHOWN: SFML-110-X2-X-D-K)
(ALTERNATE CONSTRUCTION SHOWN)

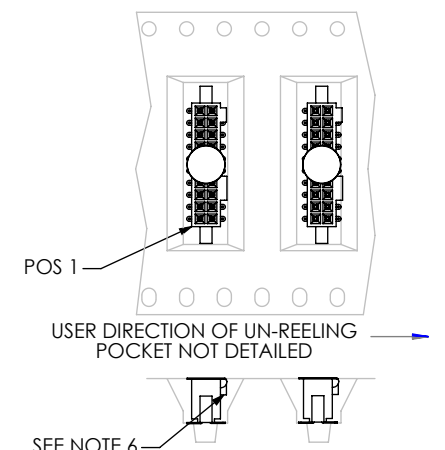
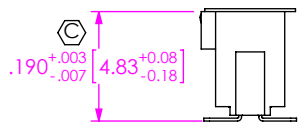


FIG 2

-TR: TAPE & REEL PACKAGING
(ALTERNATE KEYING OPTION SHOWN)



DIMENSION APPLIES PRIOR TO RE-PRESS,
SEE SECTION "C"- "C" FOR FINISHED DIMENSION

IN-PROCESS

PROPRIETARY NOTE

THIS DOCUMENT CONTAINS CONFIDENTIAL AND PROPRIETARY INFORMATION AND ALL DESIGN, MANUFACTURING, REPRODUCTION, USE, PATENT RIGHTS AND SALES RIGHTS ARE EXPRESSLY RESERVED BY SAMTEC, INC. THIS DOCUMENT SHALL NOT BE DISCLOSED, IN WHOLE OR PART, TO ANY UNAUTHORIZED PERSON OR ENTITY NOR REPRODUCED, TRANSFERRED OR INCORPORATED IN ANY OTHER PROJECT IN ANY MANNER WITHOUT THE EXPRESS WRITTEN CONSENT OF SAMTEC, INC.

DO NOT SCALE DRAWING

SHEET SCALE: 4:1



520 PARK EAST BLVD, NEW ALBANY, IN 47150
PHONE: 812-944-6733 FAX: 812-948-5047
e-Mail: info@SAMTEC.com code: 55322

DESCRIPTION:
.050 [1.27] x .050 [1.27] LOCKING SOCKET ASSEMBLY

DWG. NO.
SFML-1XX-XX-XXX-D-XXX-X-XX

BY: BRATCHER 4/19/99 SHEET 2 OF 4

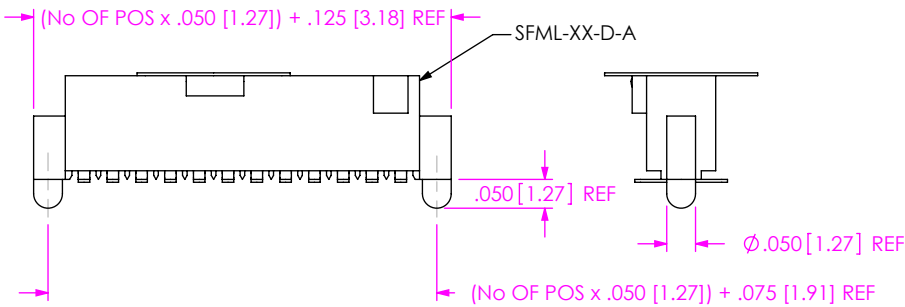


FIG 5
-A: ALIGNMENT PIN OPTION
(SAME AS FIG 1, UNLESS OTHERWISE STATED)
(ALTERNATE CONSTRUCTION SHOWN)

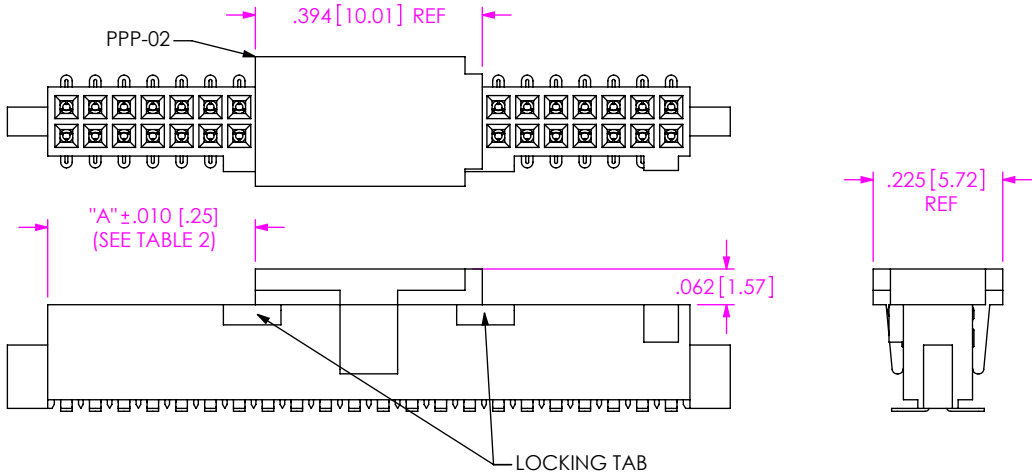
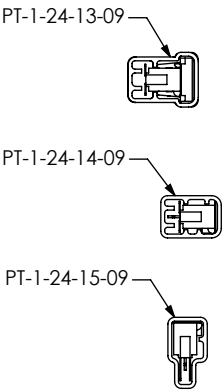
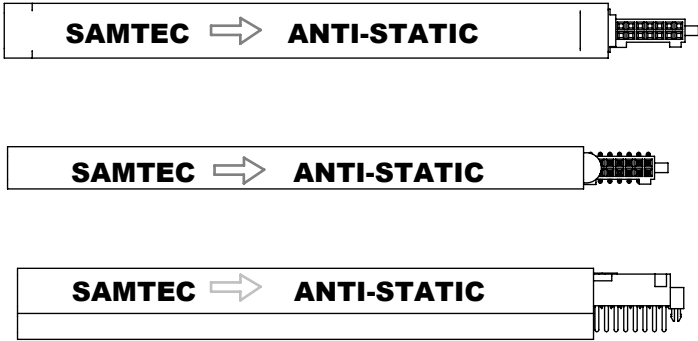


FIG 6
-P: PICK & PLACE PAD OPTION
(SAME AS FIG 1, UNLESS OTHERWISE STATED)
(ALTERNATE CONSTRUCTION SHOWN)

TABLE 2	
POS.	"A"
-35 AND ABOVE (ODD)	{{(No OF POS x .050 [1.27]) / 2} -.2895 [7.353]}
EVEN ABOVE -34	{{(No OF POS x .050 [1.27]) / 2} -.3145 [7.989]}
ODD ABOVE -19	{{(No OF POS x .050 [1.27]) / 2} -.1895 [4.813]}
EVEN ABOVE -18	{{(No OF POS x .050 [1.27]) / 2} -.2145 [5.448]}
-07	.065 [1.65] OVERHANG
-10	.086 [2.18]
-11	.136 [3.45]
-12	.186 [4.72]
-13	.236 [5.99]
-14	.286 [7.26]
-15	.086 [2.18]
-16	.136 [3.45]
-17	.186 [4.72]
-18	.236 [5.99]
-19	.286 [7.26]



PACKAGE PARTS IN TUBES AS SHOWN
(SEE NOTE 10)



LEAD STYLE	PACKAGING TUBE	PLUG
-X1-X, -X3-X (NO PAD)	PT-1-24-15-09	TP-12
-X1-X-P (W/ P&P PAD)	PT-1-24-01-09	TP-24
-X2-X (NO P&P PAD)	PT-1-24-14-09	TP-24-02
-X2-X-P, -X3-X-P (W/ P&P PAD)	PT-1-24-13-09	TP-24
-X1-K, -X3-K	PT-1-24-13-09	TP-24
-X2-K	PT-1-24-14-09	TP-24-02
-X2-SNX	PT-SFM004-X1-X3-D	TP-24-02

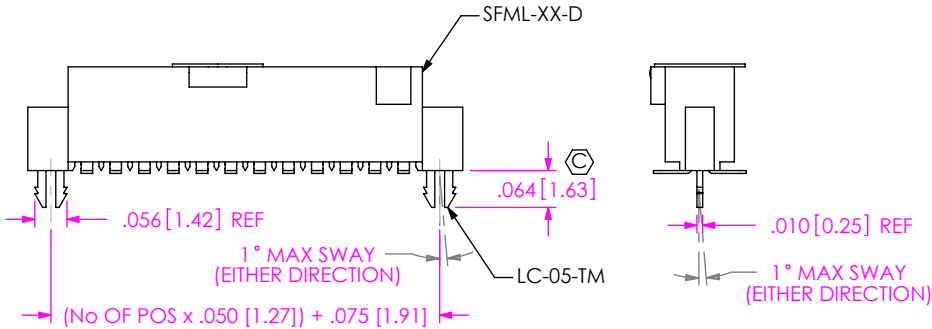


FIG 7
-LC: LOCKING CLIP OPTION
(SAME AS FIG 1, UNLESS OTHERWISE STATED)
(ALTERNATE CONSTRUCTION SHOWN)

PROPRIETARY NOTE

THIS DOCUMENT CONTAINS CONFIDENTIAL AND PROPRIETARY INFORMATION AND ALL DESIGN, MANUFACTURING, REPRODUCTION, USE, PATENT RIGHTS AND SALES RIGHTS ARE EXPRESSLY RESERVED BY SAMTEC, INC. THIS DOCUMENT SHALL NOT BE DISCLOSED, IN WHOLE OR PART, TO ANY UNAUTHORIZED PERSON OR ENTITY NOR REPRODUCED, TRANSFERRED OR INCORPORATED IN ANY OTHER PROJECT IN ANY MANNER WITHOUT THE EXPRESS WRITTEN CONSENT OF SAMTEC, INC.

DO NOT SCALE DRAWING

SHEET SCALE: 3:1

samtec

520 PARK EAST BLVD, NEW ALBANY, IN 47150
PHONE: 812-944-6733 FAX: 812-948-5047
e-Mail: info@SAMTEC.com code: 55322

DESCRIPTION:
.050 [1.27] x .050 [1.27] LOCKING SOCKET ASSEMBLY

DWG. NO.
SFML-1XX-XX-XXX-D-XXX-X-XX

BY: BRATCHER 4/19/99 SHEET 3 OF 4

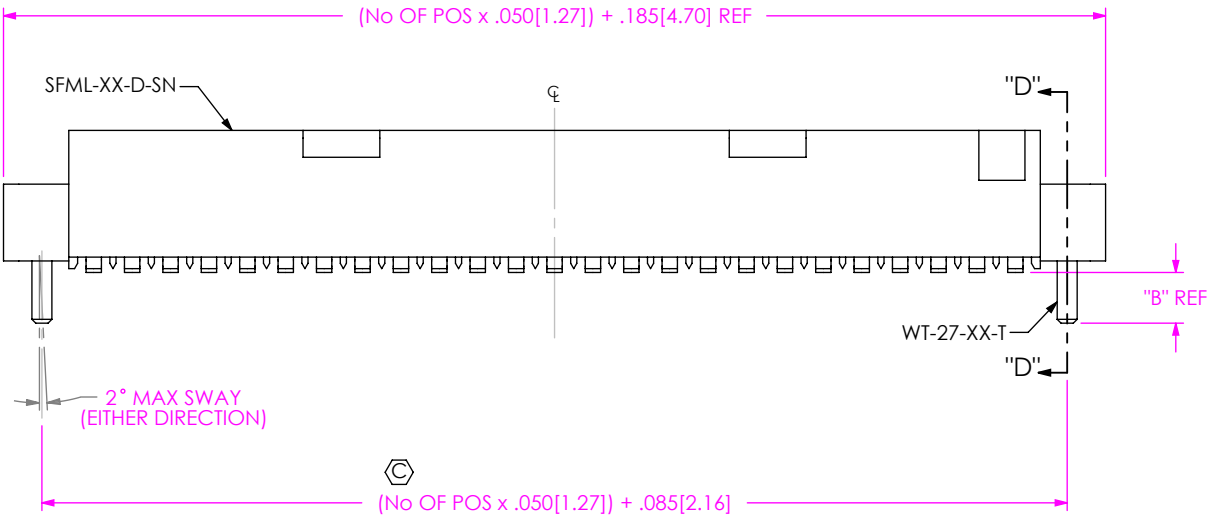
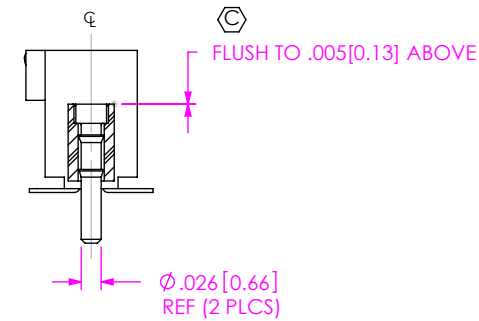


FIG 8
-SNX: SOLDER NAIL OPTION
(SHOWN: SFML-125-02-XXX-D-SN
(SAME AS FIG 1, UNLESS OTHERWISE STATED)
(ONLY AVAILABLE ON -X2 LEAD STYLES)



SECTION "D"-"D"

TABLE 3	
OPTION	"B"
-SN	.066[1.68]
SN2	.101[1.80]

PROPRIETARY NOTE
THIS DOCUMENT CONTAINS CONFIDENTIAL AND PROPRIETARY INFORMATION AND ALL DESIGN, MANUFACTURING, REPRODUCTION, USE, PATENT RIGHTS AND SALES RIGHTS ARE EXPRESSLY RESERVED BY SAMTEC, INC. THIS DOCUMENT SHALL NOT BE DISCLOSED, IN WHOLE OR PART, TO ANY UNAUTHORIZED PERSON OR ENTITY NOR REPRODUCED, TRANSFERRED OR INCORPORATED IN ANY OTHER PROJECT IN ANY MANNER WITHOUT THE EXPRESS WRITTEN CONSENT OF SAMTEC, INC.

DO NOT SCALE DRAWING

SHEET SCALE: 4:1



520 PARK EAST BLVD, NEW ALBANY, IN 47150
PHONE: 812-944-6733 FAX: 812-948-5047
e-Mail: info@SAMTEC.com code: 55322

DESCRIPTION:
.050 [1.27] x .050 [1.27] LOCKING SOCKET ASSEMBLY

DWG. NO.
SFML-1XX-XX-XXX-D-XXX-X-XX

BY: BRATCHER 4/19/99 SHEET 4 OF 4