



NEW PRODUCT BULLETIN 669

MICRO-CON-X<sup>®</sup>  
**INSTA-CLICK<sup>™</sup>**  
SEALED CONNECTORS



**Switchcraft<sup>®</sup>**  
**CONXALL<sup>®</sup>**

HARSH ENVIRONMENT CONNECTIVITY SOLUTIONS

Hundreds of configurations available up to 7 pins with a variety of options

Insta-Click™ spring loaded latching mechanism locks automatically



Available as field installable connectors or factory molded cable assemblies

Easy disconnect with a quarter turn of the coupling ring

Insta-Click™ connectors mate with special Insta-Click™ panel mount connectors

## NEW PRODUCT

The Micro-Con-X® from Conxall® has set the standard for harsh environment connectors, and the new Insta-Click™ product line adds several key improvements for even harsher environment. An all-new latching mechanism provides an automatic positive lock while improving the water resistance rating to IP68 (when used as part of a molded cable assembly). A high quality new plastic offers UV resistance.

**IP68**  
RATED WATER  
RESISTANCE

The Con-X® Insta-Click™ series is sealed to IP68 for harsh environments when used with a molded cable assembly.

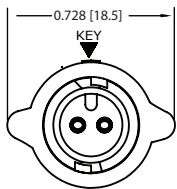
**UL F1**  
RATED UV  
RESISTANCE

A special high-PBT material provides excellent UV resistance for outdoor use and lighting applications

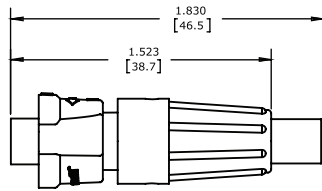
  
**CONXALL**  
QUALITY

Made in USA to the high standards that have made Conxall the leading name in harsh environment connectors.

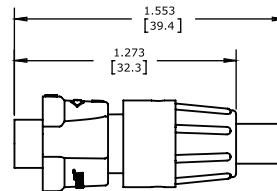
## OVERALL DIMENSIONS



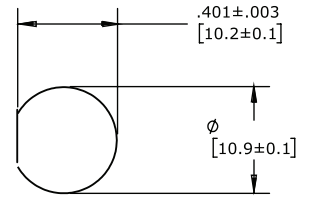
Connector Mating Face



Connector with Long Backshell

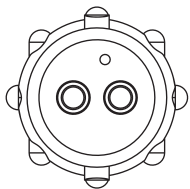


Connector with Short Backshell

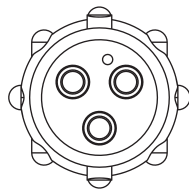


Recommended Panel Cutout

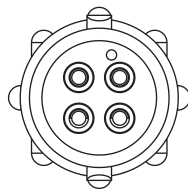
## CONTACT LAYOUTS (REAR/WIRING SIDE OF PANEL SHOWN)



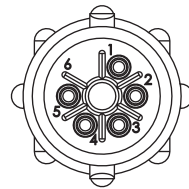
2 POSITION  
#20 PIN & SOCKET CONTACT



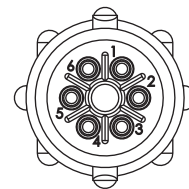
3 POSITION  
#20 PIN & SOCKET CONTACT



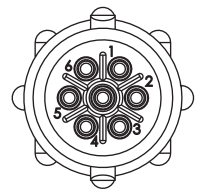
4 POSITION  
#22 PIN & SOCKET CONTACT



5 POSITION B-KEY  
#26 PIN & SOCKET CONTACT



6 POSITION A-KEY  
#26 PIN & SOCKET CONTACT



7 POSITION B-KEY  
#26 PIN & SOCKET CONTACT

## ORDERING CODE

**W XX X XX - X X G - P - XXX**

Connector Type  
**16** - Cable End Plug  
**17** - Panel Mount  
**18** - Cable to Cable

Contact Size  
**2** - #20 (2 thru 3)  
**8** - #22 (4)  
**9** - #26 (5 thru 7)

Contact Style  
**80** - Crimp  
**81** - #20 PC Tail (Short)  
**82** - Solder  
**83** - #22 PC Tail (Short)  
**84** - #26 PC Tail (Short)  
**91** - #20 PC Tail (Medium)  
**92** - #20 PC Tail (Long)

# of Contacts

Backshell / Cable OD  
**3XX - Short Backshell: in [mm]**  
 (2 & 3 Contacts Only)  
**11** - 0.09 to 0.14 [2.3 to 3.6]  
**15** - 0.15 to 0.17 [3.8 to 4.3]  
**18** - 0.18 to 0.20 [4.6 to 5.1]  
**5XX - Long Backshell: in [mm]**  
**18** - 0.18 to 0.20 [4.6 to 5.1]  
**21** - 0.21 to 0.22 [5.3 to 5.6]  
**22** - 0.22 to 0.23 [5.6 to 5.8]  
**300** - Panel Mount  
**3ES** - Panel Mount w/ Epoxy

Contact Type  
**P** - Pin  
**S** - Socket

## SPECIFICATIONS

### MECHANICAL:

Mating / Locking Type:	Spring activated positive lock
Life:	300 insertion/ withdrawal cycles minimum
Operating Forces:	13lb [6kg] insertion/ 9lb [4g] withdrawal max
Vibration:	Mil-Std 202G method 201A
Panel Hex Nut Torque:	10 in-lb [1.1 Nm] maximum
Cable Securing System:	Removable twist-lock backshell

### ELECTRICAL:

Voltage Rating:	300 V AC/DC
Current Rating:	7.5A max for # 20contacts 5.5A max for #22 contacts 3.5A- 4A max for #26 contacts Refer to website for detailed information
Insulation Resistance:	100 MΩ minimum
Contact Resistance:	20 mΩ maximum

### ENVIRONMENTAL:

Temperature Limits:	-40°C to +85°C (-40°F to +185°F)
Operating Temperature:	Refer to website for detailed information
Moisture Resistance:	Mil-Std 202G method 106G
Insulation Resistance:	Mil-Std 202G method 302 condition B
Thermal Shock:	Mil-Std 202G method 107G
Salt Atmosphere :	Mil-Std 202G method 101E condition B
Ingress Protection :	IP66, IP67, IP68 per IEC60529 (Molded cable assemblies , consult factory)

### MATERIAL:

Outer Shell:	Thermoplastic
Hex Nut:	Thermoplastic
Grommet/ Strain Relief:	Elastomer, black
Gasket:	Elastomer, black
Seal O-rings:	Silicone, red
Contacts:	Copper Alloy, gold plated