

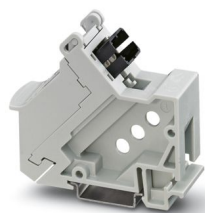
VS-PP-F-SCRJ - DIN rail adapter



1658121

<https://www.phoenixcontact.com/us/products/1658121>

Please be informed that the data shown in this PDF document is generated from our online catalog. Please find the complete data in the user documentation. Our general terms of use for downloads are valid.



Patch panel, SC-RJ, DIN rail mounting, IP20, 1 slot, socket/socket, can be used for glass, multi-mode, PCF, and polymer fibers

Product description

Freenet system

Your advantages

- Compact design
- DIN rail mounting
- Individual marking field
- Can be used for all fiber types

Commercial data

Item number	1658121
Packing unit	1 pc
Minimum order quantity	1 pc
Sales key	AB15
Product key	ABNGAB
Catalog page	Page 375 (C-2-2019)
GTIN	4046356149167
Weight per piece (including packing)	48.3 g
Weight per piece (excluding packing)	48.3 g
Customs tariff number	85367000
Country of origin	CH

VS-PP-F-SCRJ - DIN rail adapter



1658121

<https://www.phoenixcontact.com/us/products/1658121>

Technical data

Product properties

Product type	Patch panel
Housing type	DIN rail adapter
Type	SCRJ
Number of positions	2
Connection profile	SCRJ in accordance with DIN EN 50377-6-1
Number of slots	1

Data management status

Article revision	00
------------------	----

Electrical properties

Transmission medium	FO
---------------------	----

Connection data

Connection method	Coupling
-------------------	----------

Dimensions

Width	26.8 mm
Height	71 mm
Length	81.4 mm

Mechanical characteristics

Ferrule diameter	2.50 mm
------------------	---------

Material specifications

Color	gray
Flammability rating according to UL 94	V0
Ferrule material	Zirconia ceramics
Housing material	PC-GF
Material, protective cover	PC

Cable/line

External cable diameter	4.5 mm ... 9 mm
-------------------------	-----------------

FO cable

Fiber type	GOF, PCF, POF
------------	---------------

Mechanical properties

Mechanical data

Insertion/withdrawal cycles	≥ 500
-----------------------------	-------

Environmental and real-life conditions

VS-PP-F-SCRJ - DIN rail adapter



1658121

<https://www.phoenixcontact.com/us/products/1658121>

Ambient conditions

Degree of protection	IP20
	IP20
Ambient temperature (operation)	-10 °C ... 60 °C
Ambient temperature (storage/transport)	-40 °C ... 70 °C

Mounting

Mounting type	DIN rail mounting
---------------	-------------------

VS-PP-F-SCRJ - DIN rail adapter



1658121

<https://www.phoenixcontact.com/us/products/1658121>

Classifications

ECLASS

ECLASS-11.0	19170112
ECLASS-12.0	19170112
ECLASS-13.0	19170112

ETIM

ETIM 9.0	EC001128
----------	----------

UNSPSC

UNSPSC 21.0	43223300
-------------	----------

VS-PP-F-SCRJ - DIN rail adapter



1658121

<https://www.phoenixcontact.com/us/products/1658121>

Environmental product compliance

EU RoHS

Fulfills EU RoHS substance requirements	Yes, No exemptions
---	--------------------

China RoHS

Environment friendly use period (EFUP)	EFUP-E
	No hazardous substances above the limits

EU REACH SVHC

REACH candidate substance (CAS No.)	No substance above 0.1 wt%
-------------------------------------	----------------------------

Phoenix Contact 2024 © - all rights reserved
<https://www.phoenixcontact.com>

Phoenix Contact USA
586 Fulling Mill Road
Middletown, PA 17057, United States
(+717) 944-1300
info@phoenixcon.com