

DO NOT
SCALE FROM
THIS PRINT

DESIGNED & DIMENSIONED
IN MILLIMETERS[INCHES]

PES-XX-XX-X-VT-XX

No OF POSITIONS
-02, -04, -06, -08

OPTION
-LC: LOCKING CLIP
(USE LC-11-TM)
(SEE FIG 2, SHT 2)

LEAD STYLE

-01: FOR 1.57[.062] THICK PCB
(USE SUB-C-204-01-X)
-02: FOR 3.18[.125] THICK PCB
(USE SUB-C-204-02-X)

VERTICAL

PLATING SPECIFICATION

-S: SELECTIVE GOLD/MATTE TIN ON TAIL
-T: MATTE TIN ALL OVER
-L: LIGHT SELECTIVE GOLD/MATTE TIN ON TAIL

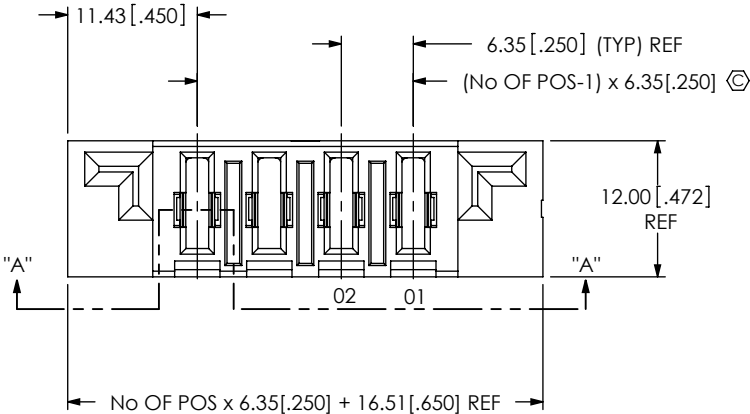


TABLE 1		
STYLE	"A"	SUB-C-204-XX-X
-01	2.35[.093]	SUB-C-204-01-X
-02	3.95[.156]	SUB-C-204-02-X

TABLE 3	
STACK HEIGHT	
PART NUMBER	PET-XX-XX-X-VT-XX
PES-XX-XX-X-VT-XX	8.8MM

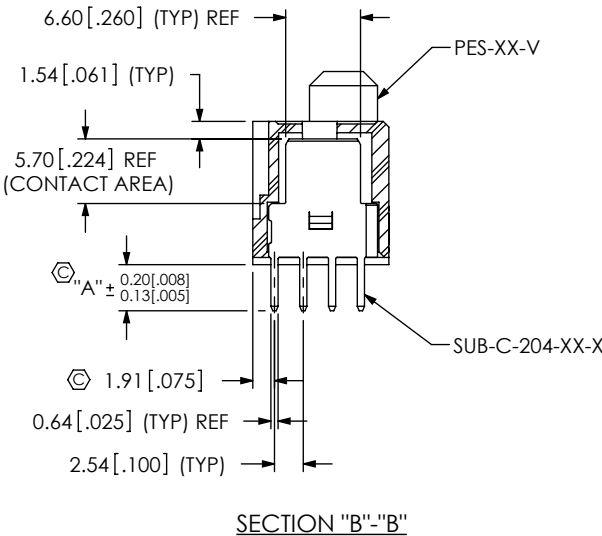
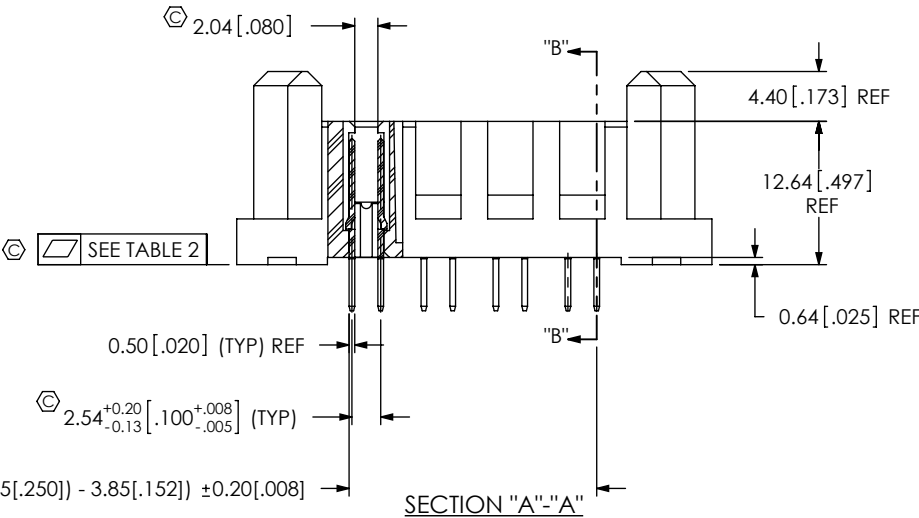


TABLE 2	
PART NUMBER	MAX
PES-02-XX-X-VT-XX	0.15[.006]
PES-04-XX-X-VT-XX	0.15[.006]
PES-06-XX-X-VT-XX	0.20[.008]
PES-08-XX-X-VT-XX	0.20[.008]

NOTES:

1. Ⓢ REPRESENTS A CRITICAL DIMENSION.
2. BURR ALLOWANCE: 0.038[.0015] MAX.
3. MINIMUM PUSHOUT FORCE: 4.45N[1.0 LB].
4. PARTS TO BE PACKAGED IN TRAYS.

FIG 1
PES-04-02-X-VT SHOWN

UNLESS OTHERWISE SPECIFIED,
DIMENSIONS ARE IN MILLIMETERS.
TOLERANCES ARE:
DECIMALS ANGLES
.X: ±0.3 [.01] 2°
.XX: ±0.13 [.005]
.XXX: ±0.051 [.0020]

PROPRIETARY NOTE

THIS DOCUMENT CONTAINS INFORMATION
CONFIDENTIAL AND PROPRIETARY TO
SAMTEC, INC. AND SHALL NOT BE REPRODUCED
OR TRANSFERRED TO OTHER DOCUMENTS OR
DISCLOSED TO OTHERS OR USED FOR ANY
PURPOSE OTHER THAN THAT WHICH IT WAS
OBTAINED WITHOUT THE EXPRESSED WRITTEN
CONSENT OF SAMTEC, INC.

MATERIAL: DO NOT SCALE DRAWING
INSULATOR: LCP, COLOR: BLACK
CONTACT: COPPER ALLOY

SHEET SCALE: 1:0.666667

samtec

520 PARK EAST BLVD, NEW ALBANY, IN 47150
PHONE: 812-944-6733 FAX: 812-948-5047
e-Mail: info@SAMTEC.com code: 55322

DESCRIPTION:

VERTICAL POWER SOCKET

DWG. NO.

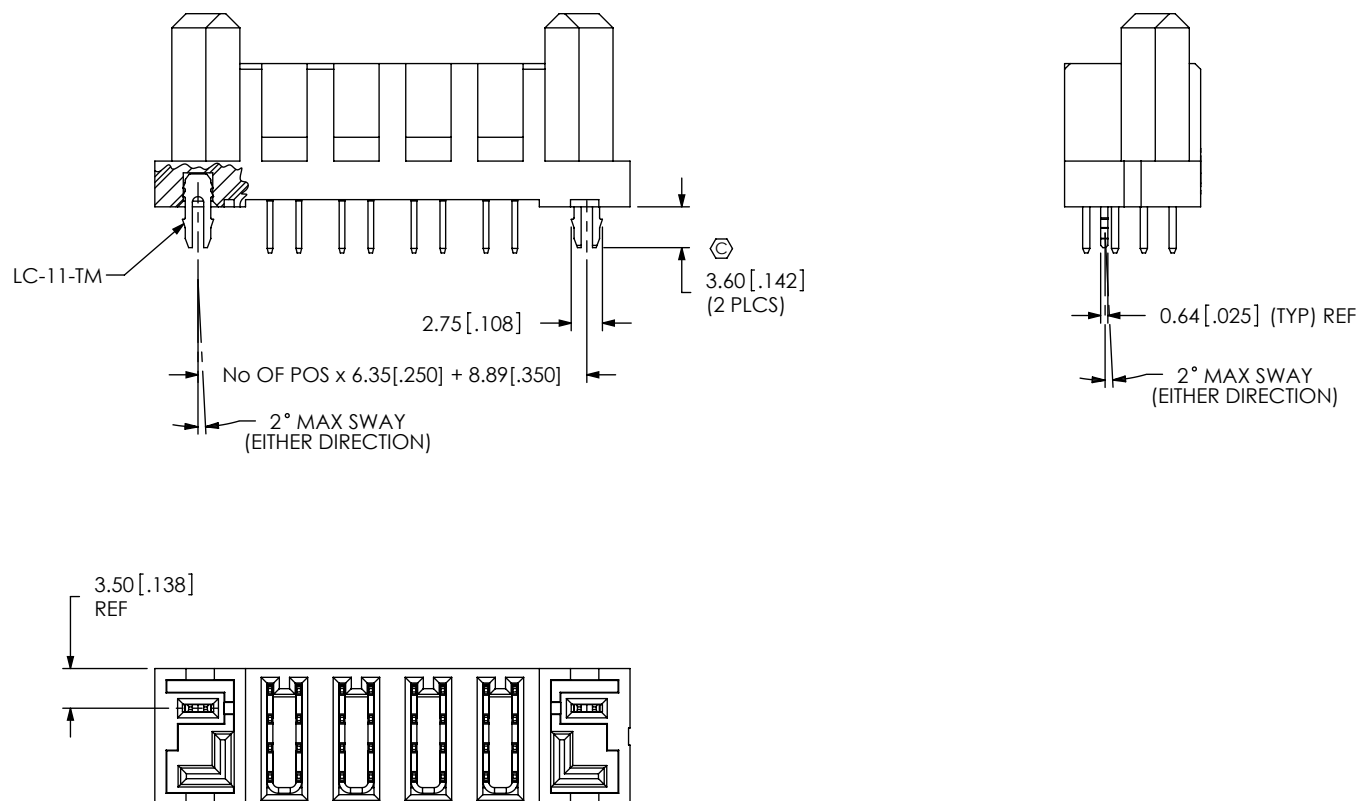
PES-XX-XX-X-VT-XX

BY: CHAD F

3/24/2005

SHEET 1 OF 2

FIG 2
PES-04-02-X-VT-LC SHOWN
(SAME AS FIG 1, UNLESS OTHERWISE STATED)



<p>PROPRIETARY NOTE</p> <p>THIS DOCUMENT CONTAINS INFORMATION CONFIDENTIAL AND PROPRIETARY TO SAMTEC, INC. AND SHALL NOT BE REPRODUCED OR TRANSFERRED TO OTHER DOCUMENTS OR DISCLOSED TO OTHERS OR USED FOR ANY PURPOSE OTHER THAN THAT WHICH IT WAS OBTAINED WITHOUT THE EXPRESSED WRITTEN CONSENT OF SAMTEC, INC.</p> <p>DO NOT SCALE DRAWING</p> <p>SHEET SCALE: 1:0.666667</p>		<p>samtec</p> <p>520 PARK EAST BLVD, NEW ALBANY, IN 47150 PHONE: 812-944-6733 FAX: 812-948-5047 e-Mail: info@SAMTEC.com code: 55322</p>	
		DESCRIPTION: VERTICAL POWER SOCKET	
		DWG. NO. PES-XX-XX-X-VT-XX	
		BY: CHAD F	3/24/2005
		SHEET 2 OF 2	