

FIG 1  
(UPT-04-01-X-RA-X SHOWN)

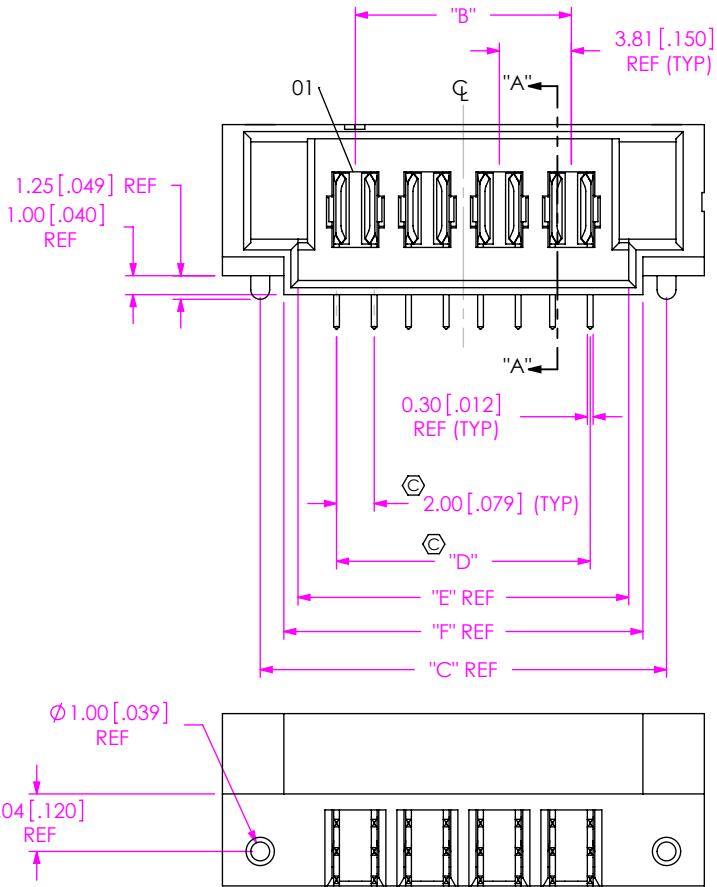
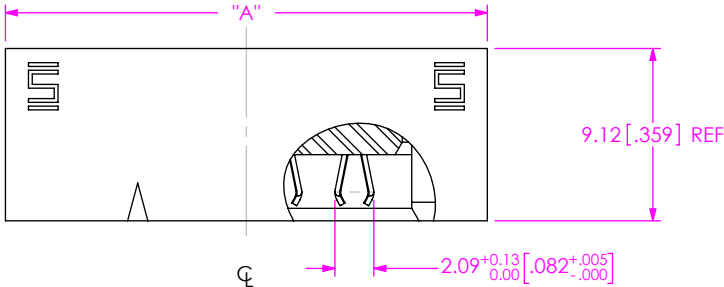


TABLE 2		
TAIL LENGTH	"G"	SUB-T-1M70-XX-X
-01	2.82 [0.111]	SUB-T-1M70-01-X
-02	3.58 [0.141]	SUB-T-1M70-02-X

UPT-XX-01-XX-X-RA-XX-XX

NO OF POSITIONS  
-02: 2 POSITIONS  
-04: 4 POSITIONS  
-06: 6 POSITIONS  
-08: 8 POSITIONS

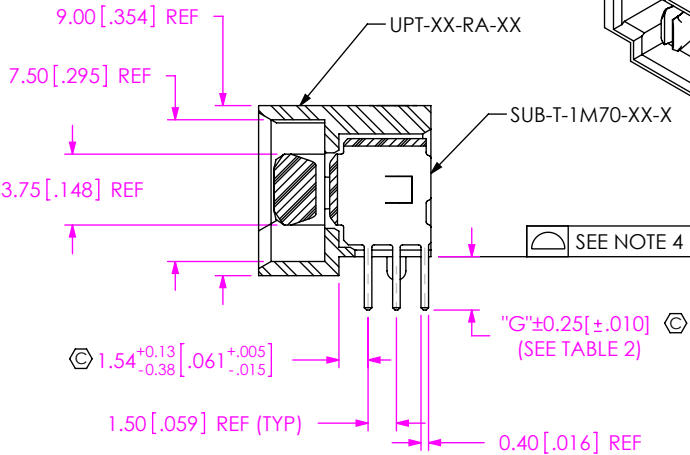
PACKAGING OPTION  
-TR: TAPE AND REEL

LEAD STYLE  
-01

OPTION  
-LC: LOCKING CLIP  
RIGHT ANGLE

TAIL LENGTH  
-01: FOR 1.57 [.062] THICK PCB  
(USE SUB-T-1M70-01-X)  
-02: FOR 2.36 [.093] THICK PCB  
(USE SUB-T-1M70-02-X)

PLATING  
-L: LIGHT SELECTIVE, 10 AU/50 NI  
MIN ON CONTACT, TIN ON TAIL  
-T: TIN, TIN ALL OVER



SECTION "A"-"A"

TABLE 1						
PART NUMBER	"A"	"B"	"C"	"D"	"E"	"F"
UPT-02-XX-X-RA-XX	17.88 [ .704]	3.81 [ .150]	13.88 [ .546]	5.81 [ .228]	9.88 [ .389]	11.38 [ .448]
UPT-04-XX-X-RA-XX	25.50 [ 1.004]	11.43 [ .450]	21.50 [ .846]	13.43 [ .529]	17.50 [ .689]	19.00 [ .748]
UPT-06-XX-X-RA-XX	33.12 [ 1.304]	19.05 [ .750]	29.12 [ 1.146]	21.05 [ .829]	25.12 [ .989]	26.62 [ 1.048]
UPT-08-XX-X-RA-XX	40.74 [ 1.604]	26.67 [ 1.050]	36.74 [ 1.446]	28.67 [ 1.029]	32.74 [ 1.289]	34.24 [ 1.348]

UNLESS OTHERWISE SPECIFIED,  
DIMENSIONS ARE IN MILLIMETERS  
TOLERANCES ARE:  
DECIMALS ANGLES  
X.X: ±0.3 [.01]  
X.XX: ±0.13 [.005]  
X.XXX: ±0.051 [.0020]

PROPRIETARY NOTE  
THIS DOCUMENT CONTAINS CONFIDENTIAL AND  
PROPRIETARY INFORMATION AND ALL DESIGN,  
MANUFACTURING, REPRODUCTION, USE, PATENT RIGHTS  
AND SALES RIGHTS ARE EXPRESSLY RESERVED BY SAMTEC,  
INC. THIS DOCUMENT SHALL NOT BE DISCLOSED, IN WHOLE  
OR PART, TO ANY UNAUTHORIZED PERSON OR ENTITY NOR  
REPRODUCED, TRANSFERRED OR INCORPORATED IN ANY  
OTHER PROJECT IN ANY MANNER WITHOUT THE EXPRESS  
WRITTEN CONSENT OF SAMTEC, INC.

MATERIAL: DO NOT SCALE DRAWING  
INSULATOR: LCP, COLOR: BLACK UL 94 VO  
TERMINAL: BeCu  
LOCKING CLIP: PHOS BRONZE

SHEET SCALE: 1:0.4

**samtec**

520 PARK EAST BLVD, NEW ALBANY, IN 47150  
PHONE: 812-944-6733 FAX: 812-948-5047  
e-Mail: info@SAMTEC.com code: 55322

DESCRIPTION: UPT-RA, ASSEMBLY

DWG. NO. UPT-XX-01-XX-X-RA-XX-XX

BY: B RAY 10/01/2008 SHEET 1 OF 2

NOTES:  
1. Ⓢ REPRESENTS A CRITICAL DIMENSION.  
2. BURR ALLOWANCE: 0.038 [.0015] MAX.  
3. MINIMUM PUSHOUT FORCE: 4.5N [1.0 LB].  
4. MAXIMUM ALLOWABLE BOW: .15 [.006].  
5. MINIMUM -LC PULL OUT FORCE: 2.23 N [0.5LB]

FIG 2  
(UPT-04-01-X-RA-X-LC SHOWN)  
(SAME AS FIG 1, DIFFERENT AS SHOWN)

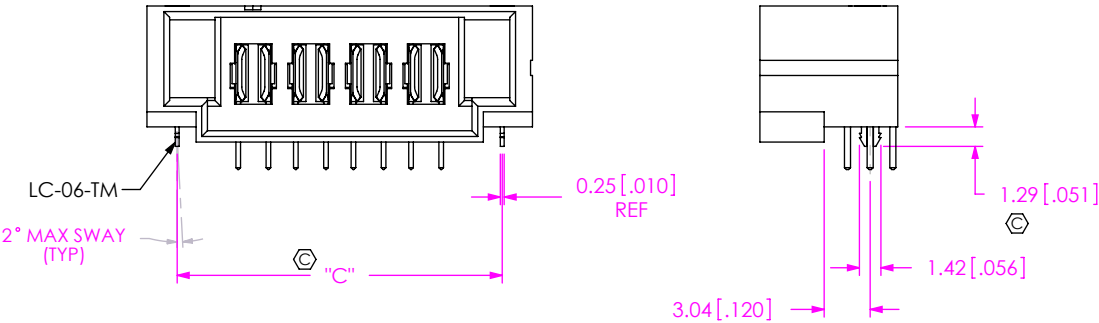


TABLE 3		
PLATING	POWER PIN CONTACT AREA	POWER PIN TAIL
-L	LIGHT GOLD	MATTE TIN
-T	MATTE TIN	MATTE TIN

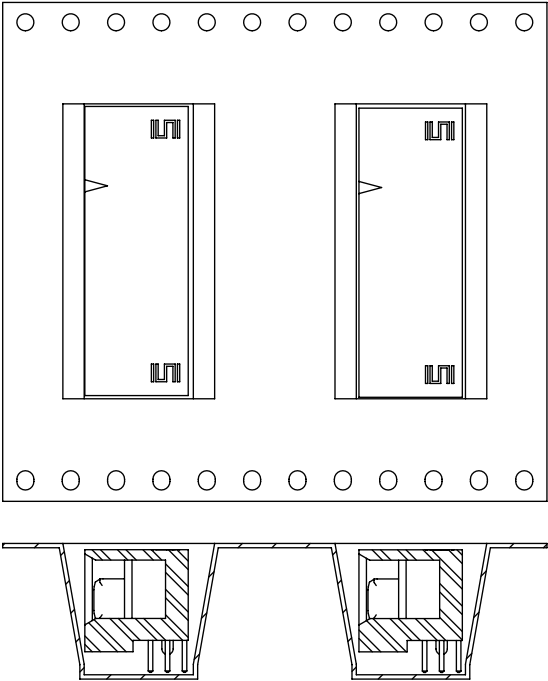
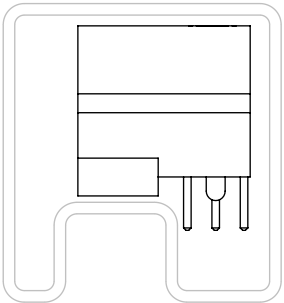


FIG 3  
-TR: PACKAGING VIEW  
TAPE AND REEL



PACKAGING TUBE VIEW

TUBE TABLE		
TAIL LENGTH	TUBE	PLUG
ALL	PT-1-24-01-40	TP-13

PROPRIETARY NOTE  
THIS DOCUMENT CONTAINS CONFIDENTIAL AND PROPRIETARY INFORMATION AND ALL DESIGN, MANUFACTURING, REPRODUCTION, USE, PATENT RIGHTS AND SALES RIGHTS ARE EXPRESSLY RESERVED BY SAMTEC, INC. THIS DOCUMENT SHALL NOT BE DISCLOSED, IN WHOLE OR PART, TO ANY UNAUTHORIZED PERSON OR ENTITY NOR REPRODUCED, TRANSFERRED OR INCORPORATED IN ANY OTHER PROJECT IN ANY MANNER WITHOUT THE EXPRESS WRITTEN CONSENT OF SAMTEC, INC.

DO NOT SCALE DRAWING

SHEET SCALE: 1:0.333333

**samtec**  
520 PARK EAST BLVD, NEW ALBANY, IN 47150  
PHONE: 812-944-6733 FAX: 812-948-5047  
e-Mail: info@SAMTEC.com code: 55322

DESCRIPTION: UPT-RA, ASSEMBLY

DWG. NO. UPT-XX-01-XX-X-RA-XX-XX

BY: B RAY 10/01/2008 SHEET 2 OF 2