
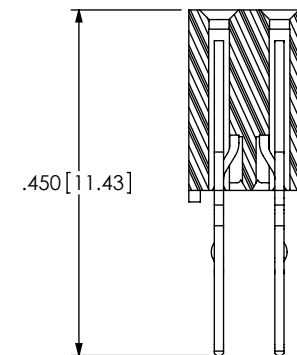
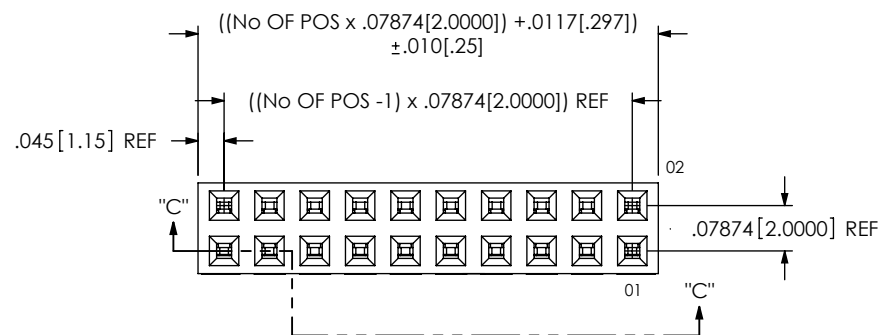


- NOTES:
- 1. Ⓢ REPRESENTS A CRITICAL DIMENSION.
  - 2. MAXIMUM CUT FLASH: .020 [.51].
  - 3. MINIMUM CONTACT RETENTION: .5 LB PER PIN.
  - 4. PARTS MAY BE CUT TO POS. ONE POS LOST PER CUT.
  - 5. ALL POSITIONS TO BE LAYER PACKAGED.
  - 6. MAX ALLOWABLE BOW .0015" IN/IN.
  - 7. NOTE DELETED.
  - 8. USED FOR CUTTING PTFE BODY
  - 9. PTFE BODY IS NOT TO BE MORE THAN +/- .005[.13] FROM PLANE SET BY PTF BODY.

UNLESS OTHERWISE SPECIFIED, DIMENSIONS ARE IN INCHES. TOLERANCES ARE: DECIMALS      ANGLES .XXX: ±.005 [.13]      2° .XXXX: ±.0020 [.051] .XXXXX: ±.0020 [.051]		PROPRIETARY NOTE THIS DOCUMENT CONTAINS INFORMATION CONFIDENTIAL AND PROPRIETARY TO SAMTEC, INC. AND SHALL NOT BE REPRODUCED OR TRANSFERRED TO OTHER DOCUMENTS OR DISCLOSED TO OTHERS OR USED FOR ANY PURPOSE OTHER THAN THAT WHICH IT WAS OBTAINED WITHOUT THE EXPRESSED WRITTEN CONSENT OF SAMTEC, INC.		 520 PARK EAST BLVD, NEW ALBANY, IN 47150 PHONE: 812-944-6733    FAX: 812-948-5047 e-Mail: info@SAMTEC.com      code: 55322	
MATERIAL:      DO NOT SCALE DRAWING      SHEET SCALE: 4:1		DESCRIPTION: 2mm PRESS FIT SOCKET ASSEMBLY			
INSULATOR: LCP COLOR: BLACK CONTACT: PHOS BRONZE		DWG. NO.      PTF-1XX-XX-X-D-XXX			
F:\DWG\MISC\MKTG\PTF-1XX-XX-X-D-XXX-MKT.SLDRW		BY: KEVIN B      4/3/2000		SHEET 1 OF 2	



IN-PROCESS

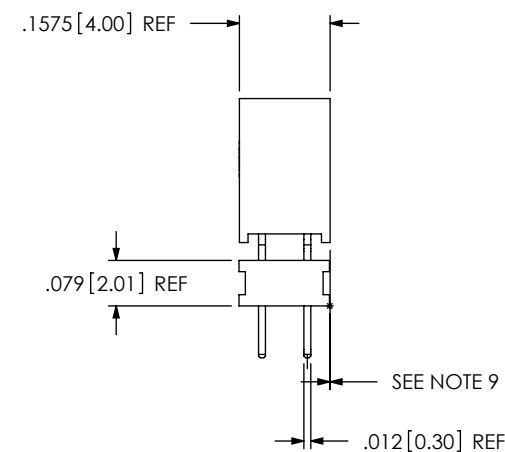
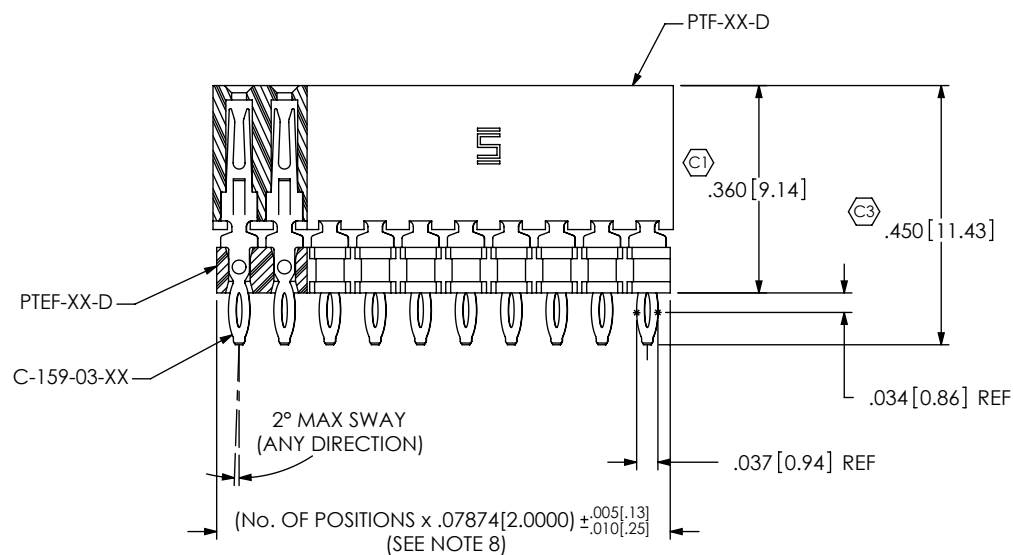


FIG. 2  
-03 LEAD STYLE  
SECTION "C"- "C"

PROPRIETARY NOTE  
THIS DOCUMENT CONTAINS INFORMATION  
CONFIDENTIAL AND PROPRIETARY TO  
SAMTEC, INC. AND SHALL NOT BE REPRODUCED  
OR TRANSFERRED TO OTHER DOCUMENTS OR  
DISCLOSED TO OTHERS OR USED FOR ANY  
PURPOSE OTHER THAN THAT WHICH IT WAS  
OBTAINED WITHOUT THE EXPRESSED WRITTEN  
CONSENT OF SAMTEC, INC.

DO NOT SCALE DRAWING

SHEET SCALE: 4:1

**samtec**

520 PARK EAST BLVD, NEW ALBANY, IN 47150  
PHONE: 812-944-6733 FAX: 812-948-5047  
e-Mail: info@SAMTEC.com code: 55322

DESCRIPTION:  
2mm PRESS FIT SOCKET ASSEMBLY

DWG. NO.  
PTF-1XX-XX-X-D-XXX

BY: KEVIN B 4/3/2000 SHEET 2 OF 2