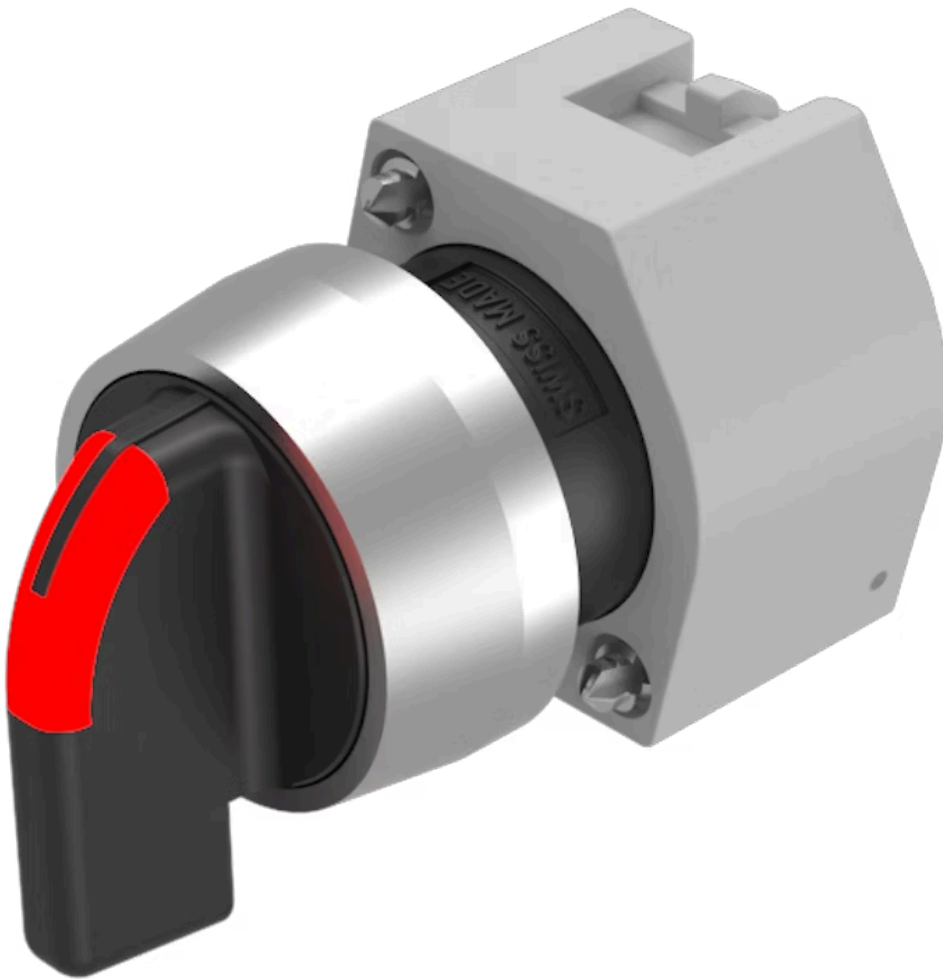


Actuator

704.095.01



<https://eao.com/p/704.095.01>

Your product:



704.095.01 Actuator

FRONT

Front dimension:	Ø 29 mm
Front bezel colour:	Nature
Front bezel material:	Aluminium

MOUNTING

Design:	raised
----------------	--------

OPERATING-/INDICATION PART

Lever colour:	Black
Lever shape:	long
Lever material:	plastic

ELECTRICAL CHARACTERISTICS

Standards:	The switches comply with the "Standards for low-voltage switching devices" DIN EN 60947-1
-------------------	---

MECHANICAL CHARACTERISTIC

Weight:	0.037 kg
Switching positions:	3 positions
Switching angle:	42° left / 42° right
Switching action:	Momentary - Rest - Momentary
Mechanical lifetime:	≤2.5 Mio. cycles of operation

AMBIENT CONDITION

Operating temperature: - 40 °C ... + 55 °C

IP Protection: IP65 front side

Storage temperature: - 40 °C ... + 85 °C

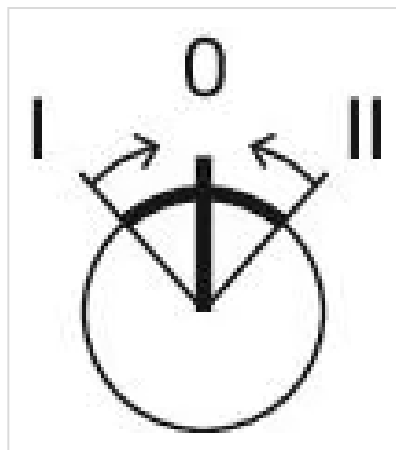
OTHER

Short Description: Actuator, Ø 29 mm, optional illuminative, Black, long, Nature, Aluminium, anodised, Momentary - Rest - Momentary

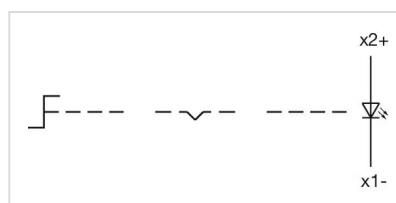
max. number of switching elements: 3

Hints: Max. 3 switching elements can be clipped on

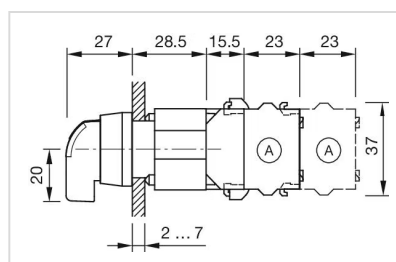
Switching positions:



Wiring diagrams:

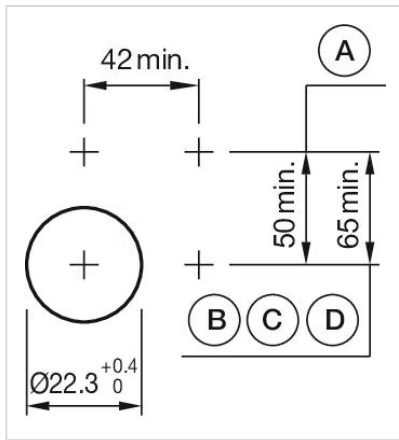


Dimension drawings:



A = Screw terminal

Mounting cut-outs:



- A = Screw terminal
 - B = Push-in terminal (PIT)
 - C = Plug-in terminal 6.3 mm x 0.8 mm
 - D = Double plug-in terminal 6.3 mm x 0.8 mm
- mm

Mouser Electronics

Authorized Distributor

Click to View Pricing, Inventory, Delivery & Lifecycle Information:

[EAO:](#)

[704.095.01](#)