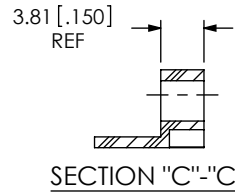
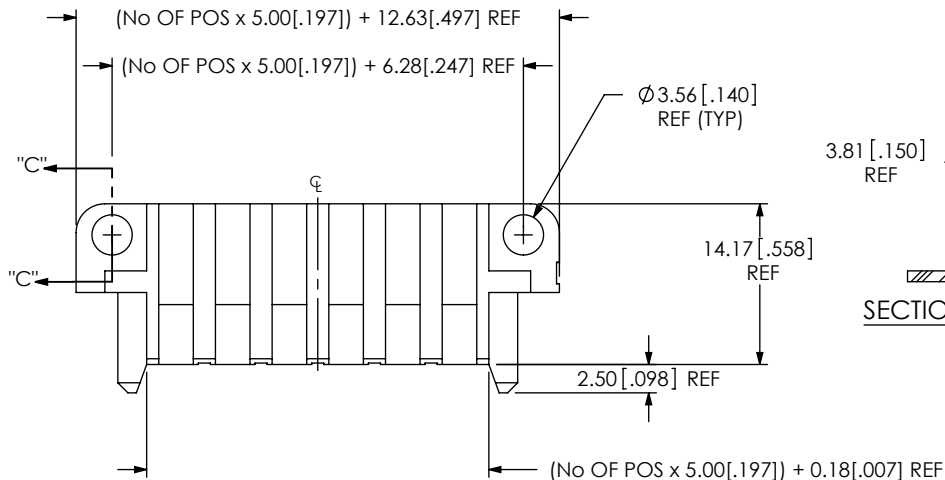


DO NOT  
SCALE FROM  
THIS PRINT



No OF POSITIONS

-02, -04, -06, -08

LEAD STYLE

-01

TAIL LENGTH

-01: FOR 1.57[.062]

THICK PCB

(USE SUB-C-215-01-X)

\*\* -02: FOR 2.36[.093]

THICK PCB

(USE SUB-C-215-04-X)

-03: FOR 2.36[.093]

THICK PCB

(USE SUB-C-215-04-X)

OPTION

-SD: SCREW DOWN  
(SEE FIG 1, SHT 1)

-LC: LOCKING CLIP  
(USE LC-07-TM)

(SEE FIG 2, SHT 2)

(-SD OR -LC MUST BE SELECTED)

RIGHT ANGLE

PLATING SPECIFICATION

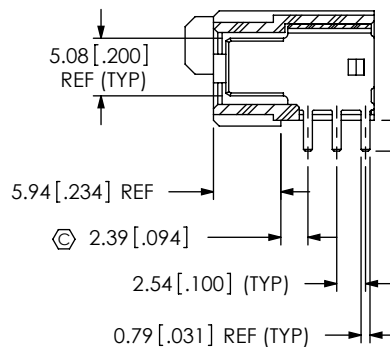
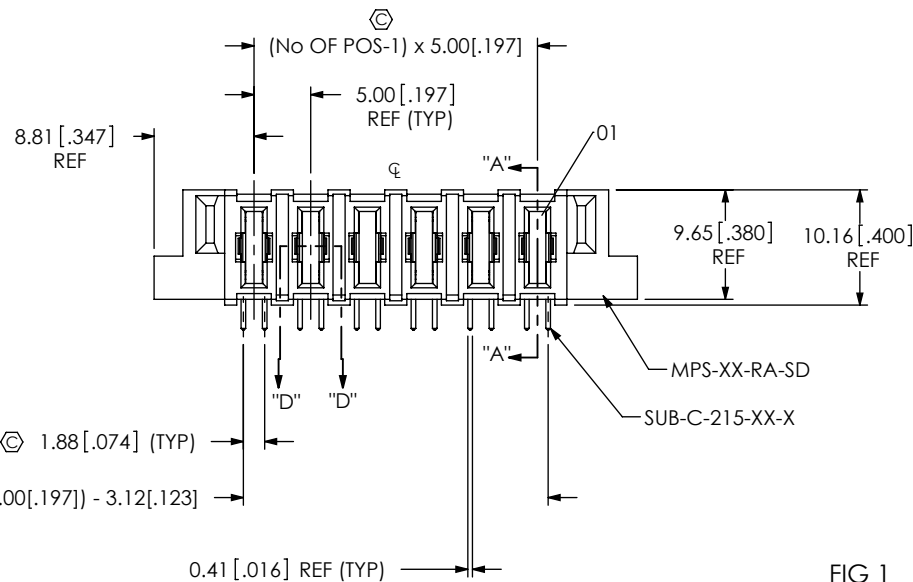
-L: 10μ" GOLD IN CONTACT  
AREA, MATTE TIN ON TAIL

-T: MATTE TIN ALL OVER

\*\*=EXISTING CUSTOMERS ONLY

TABLE 1

TAIL LENGTH	"A"	SUB-C-215-XX-X
-01	2.72[.107]	SUB-C-215-01-X
-03	3.52[.139]	SUB-C-215-04-X



"A" +0.50 [".020"]  
-0.25 [".010"]

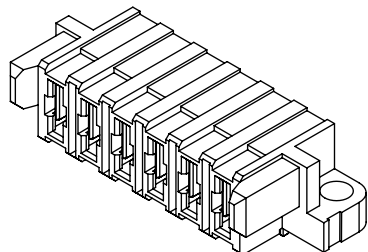
$\varnothing 1.47[.058]$

SECTION "D"-"D"

FIG 1  
MPS-06-01-X-RA-SD SHOWN

NOTES:

1.  $\varnothing$  REPRESENTS A CRITICAL DIMENSION.
2. BURR ALLOWANCE: 0.038[.0015] MAX.
3. MINIMUM PUSHOUT FORCE: 4.45N[1.0 LB].
4. PARTS TO BE PACKAGED IN TRAYS. TERMINAL #1 ORIENTATION ON TRAY DOES NOT APPLY.
5. BOW ALLOWED AT 0.075MM[.0030]/25.0MM[.98].
6. NOTE DELETED.



UNLESS OTHERWISE SPECIFIED,  
DIMENSIONS ARE IN MILLIMETERS.

TOLERANCES ARE:

DECIMALS

X.X:  $\pm 0.3[.01]$

X.XX:  $\pm 0.13[.005]$

X.XXX:  $\pm 0.051[.0020]$

ANGLES

2°

PROPRIETARY NOTE

THIS DOCUMENT CONTAINS INFORMATION  
CONFIDENTIAL AND PROPRIETARY TO  
SAMTEC, INC. AND SHALL NOT BE REPRODUCED  
OR TRANSFERRED TO OTHER DOCUMENTS OR  
DISCLOSED TO OTHERS OR USED FOR ANY  
PURPOSE OTHER THAN THAT WHICH IT WAS  
OBTAINED WITHOUT THE EXPRESSED WRITTEN  
CONSENT OF SAMTEC, INC.

MATERIAL:

INSULATOR: LCP, UL 94V-0, COLOR: BLACK  
CONTACT: COPPER ALLOY

DO NOT SCALE DRAWING

SHEET SCALE: 1:5:1

**samtec**

520 PARK EAST BLVD, NEW ALBANY, IN 47150  
PHONE: 812-944-6733 FAX: 812-948-5047  
e-Mail: info@SAMTEC.com code: 55322

DESCRIPTION:

RIGHT ANGLE MINI-POWER SOCKET

DWG. NO.

MPS-XX-01-XX-X-RA-XX

BY: BRATCHER 2/15/2007

SHEET 1 OF 2

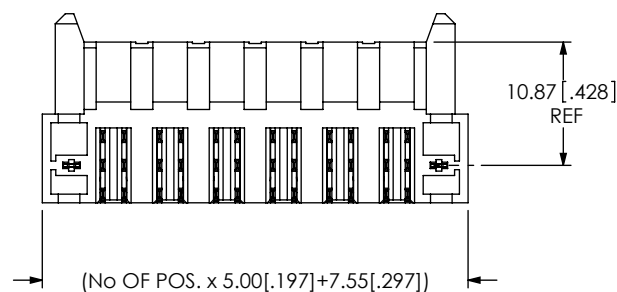
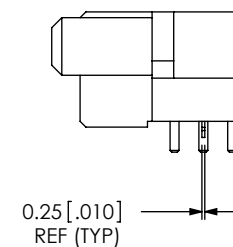
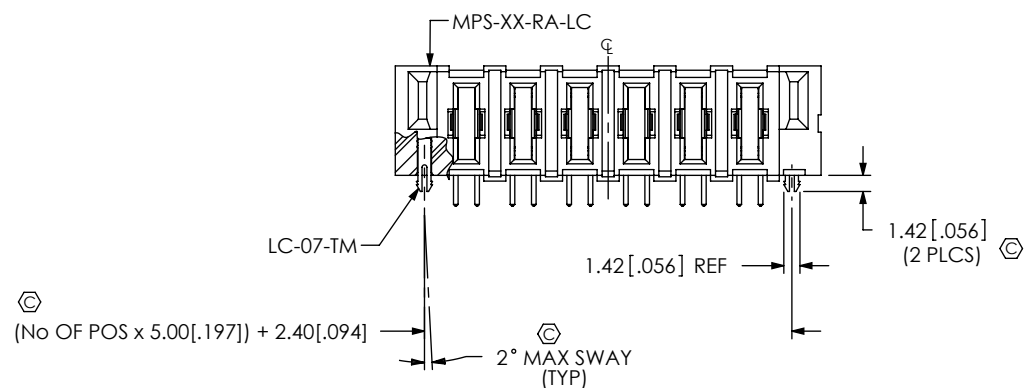


FIG 2  
MPS-06-01-X-RA-LC SHOWN  
(SAME AS FIG 1, UNLESS OTHERWISE STATED)

PROPRIETARY NOTE

THIS DOCUMENT CONTAINS INFORMATION CONFIDENTIAL AND PROPRIETARY TO SAMTEC, INC. AND SHALL NOT BE REPRODUCED OR TRANSFERRED TO OTHER DOCUMENTS OR DISCLOSED TO OTHERS OR USED FOR ANY PURPOSE OTHER THAN THAT WHICH IT WAS OBTAINED WITHOUT THE EXPRESSED WRITTEN CONSENT OF SAMTEC, INC.

DO NOT SCALE DRAWING

SHEET SCALE: 1.5:1

**samtec**

520 PARK EAST BLVD, NEW ALBANY, IN 47150  
PHONE: 812-944-6733 FAX: 812-948-5047  
e-Mail: info@SAMTEC.com code: 55322

DESCRIPTION:

RIGHT ANGLE MINI-POWER SOCKET

DWG. NO.

MPS-XX-01-XX-X-RA-XX

BY: BRATCHER 2/15/2007

SHEET 2 OF 2