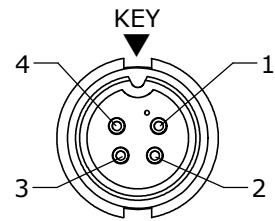
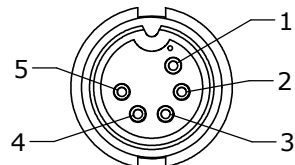


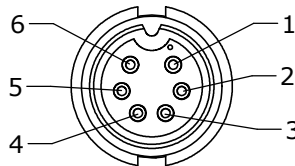
- NOTES:
1. ALL PART TO BE BULK PACKED
 2. CONTACTS SUPPLIED UNASSEMBLED
 3. ALL DIMENSION ARE REFERENCE ONLY

**FACE VIEW**

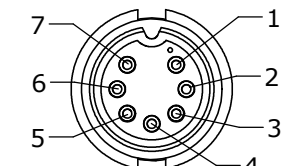
P/N: 3280-4PG-5XX

**FACE VIEW**

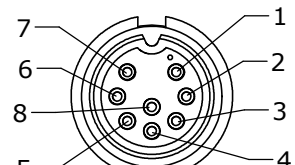
P/N: 3280-5PG-5XX

**FACE VIEW**

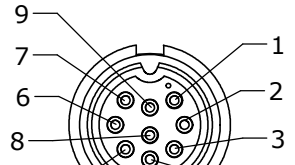
P/N: 3280-6PG-5XX

**FACE VIEW**

P/N: 3280-7PG-5XX

**FACE VIEW**

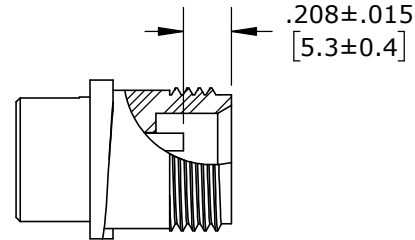
P/N: 3280-8PG-5XX

**FACE VIEW**

P/N: 3280-9PG-5XX

B

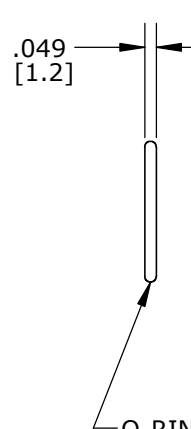
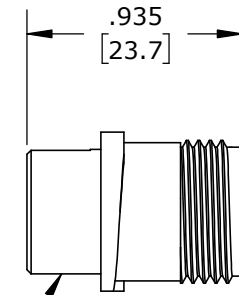
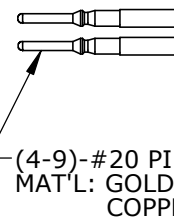
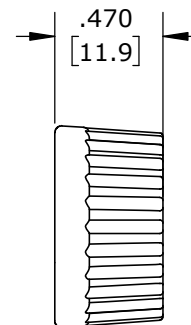
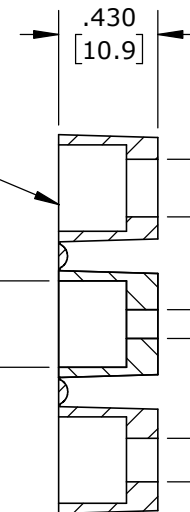
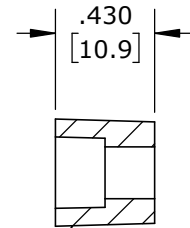
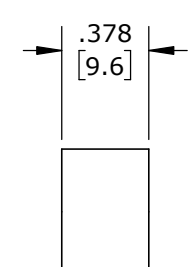
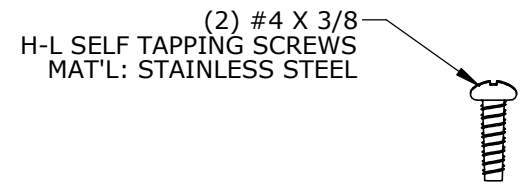
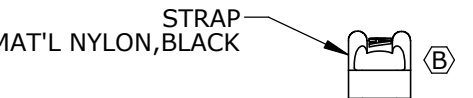
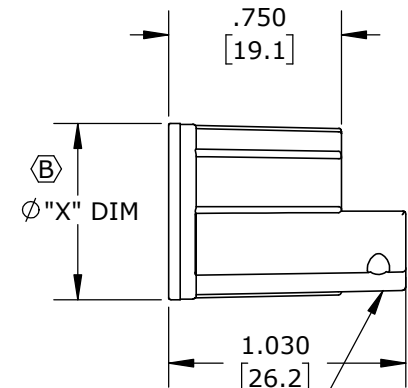
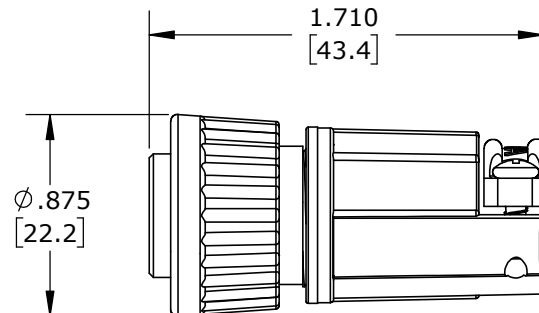
ASS'Y P/N	COUPLING RING COLOR
3280-XPG-5XXCC1	WHITE
3280-XPG-5XXCC2	RED
3280-XPG-5XXCC3	BLUE
3280-XPG-5XXCC4	LIGHT GREY
3280-XPG-5XXCC5	YELLOW
3280-XPG-5XXCC6	MAROON
3280-XPG-5XXCC7	GREEN



B

CONTACT HEIGHTS

FOR CUSTOMER REFERENCE

O-RING
MAT'L: RUBBER,BLACKPIN CONNECTOR, MALE
MAT'L: NYLON, BLACK
NO. OF CONTACTS SEE CHART(4-9)-#20 PIN CONTACTS
MAT'L: GOLD PLATED
COPPER ALLOYCOUPLING RING
MAT'L: NYLON, BLACK
FOR 3280-XPG-5XXCCX
SEE COUPLING RING COLOR CHARTGROMMET, DAISY CHAIN
MAT'L: RUBBER, BLACK
FOR 3280-XPG-5DCGROMMET
MAT'L: RUBBER, BLACK
FOR CABLE O.D.
SEE TABLESLEEVE
MAT'L: NYLON,BLACK(2) #4 X 3/8
H-L SELF TAPPING SCREWS
MAT'L: STAINLESS STEELSTRAP
MAT'L: NYLON,BLACKBACKSHELL
MAT'L: NYLON,BLACK**ASSEMBLED VIEW**

FOR CUSTOMER REFERENCE

DIMENSIONS IN BRACKETS [] ARE METRIC

CONN. KIT P/N	NO. OF CONTACTS
3280-4PG-5XX	4-#20
3280-5PG-5XX	5-#20
3280-6PG-5XX	6-#20
3280-7PG-5XX	7-#20
3280-8PG-5XX	8-#20
3280-9PG-5XX	9-#20

GROMMET SIZE
FOR SINGLE GROMMET
OR "DC" FOR DAISY CHAIN
SEE LIST

B

CONN. KIT P/N	GROMMET FOR CABLE	"X" DIM.
3280-XPG-5DC	SEE DAISY CHAIN	Ø 0.77 [19.6mm]
3280-XPG-515	.156 I.D. FOR CABLE .15-.17 O.D. [3.8-4.3mm]	Ø 0.77 [19.6mm]
3280-XPG-518	.187 I.D. FOR CABLE .18-.20 O.D. [4.6-5.1mm]	Ø 0.77 [19.6mm]
3280-XPG-521	.225 I.D. FOR CABLE .21-.23 O.D. [5.3-5.8mm]	Ø 0.77 [19.6mm]
3280-XPG-524	.250 I.D. FOR CABLE .24-.27 O.D. [6.1-6.8mm]	Ø 0.77 [19.6mm]
3280-XPG-528	.285 I.D. FOR CABLE .28-.29 O.D. [7.1-7.4mm]	Ø 0.77 [19.6mm]
3280-XPG-530	.312 I.D. FOR CABLE .30-.32 O.D. [7.6-8.1mm]	Ø 0.77 [19.6mm]
3280-XPG-535	.375 I.D. FOR CABLE .35-.40 O.D. [8.9-10.2mm]	Ø 0.83 [21.1mm]

NO OF CONTACTS

B

CUSTOMER APPROVAL

THIS DOCUMENT CONTAINS CONFIDENTIAL INFORMATION PROPRIETARY TO CONXALL CORPORATION. ANY REPRODUCTION, DISCLOSURE, OR USE OF THIS DOCUMENT /INFORMATION IS EXPRESSLY PROHIBITED UNLESS AUTHORIZED IN WRITING BY CONXALL CORPORATION.

APPROVED BY: _____

DATE: _____

RoHS COMPLIANT

B	AN	03-22-21	DRAWING NUMBER WAS 3280-XPG-5XX, ADDED COUPLING RING TABLE AND CONTACT HEIGHT VIEW, ADDED 3280-XPG-535, AND "X" DIM. TO CHART, UPDATED STRAP STYLE. PER ECR 9543
A	SS	01-14-19	DRAWING CREATED PER DOR 19-E149SL #1 SUPERSEDED DRAWING 3280-8PG-5XX
REV.	INIT.	DATE	DESCRIPTION
ALL INFORMATION ILLUSTRATED IS THE PROPERTY OF "CONXALL CORPORATION". UNAUTHORIZED DUPLICATION OR DISTRIBUTION OF THIS DOCUMENT IS PROHIBITED.			ORIG. DRAWN BY: SS DATE: 01-14-19 CHECKED BY:
ALL UNITS ARE IN FEET, INCHES, FRACTION OF INCHES AND DECIMALS.			APPROVED BY:
FILE: 3280-XPG-5XX(CCX)			SCALE: NTS SIZE: B SHEET: 1 OF 1 DIRECTORY: SLW
601 E. WILDWOOD VILLA PARK, IL 60181			TITLE: CONNECTOR ASS'Y KIT (4-9) #20 PIN CONTACTS (CRIMP) MULTI-CON-X STANDARD PRODUCT
PART NUMBER: 3280-XPG-5XX(CCX)			REV B

Mouser Electronics

Authorized Distributor

Click to View Pricing, Inventory, Delivery & Lifecycle Information:

[Switchcraft:](#)

[3280-4PG-530](#) [3280-4PG-5XX](#) [3280-5PG-5XX](#) [3280-6PG-5XX](#) [3280-7PG-5XX](#) [3280-8PG-5XX](#) [3280-9PG-515](#)
[3280-9PG-528](#) [3280-9PG-5XX](#) [3280-9PG-535](#)