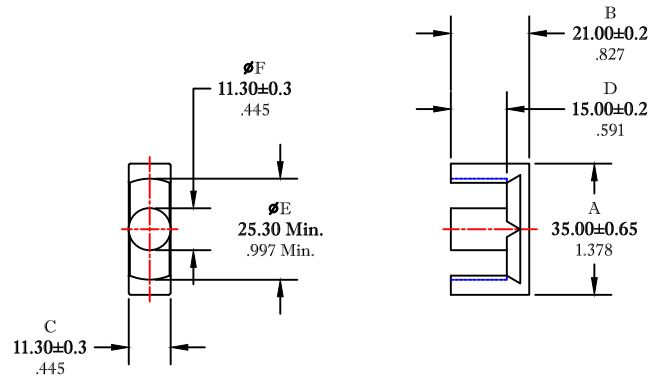


** Not all features are shown in this drawing. For more detailed information, please contact your Fair-Rite representative.

UNCONTROLLED ~CATALOG~ DRAWING

SIZE	PART NO.	REV.
B	9578354202	~



DIMENSIONS
BOLD NUMBERS ARE IN MILLIMETERS
 LIGHT NUMBERS ARE IN INCHES

ELECTRICAL SPECIFICATIONS					
$\Sigma l/A(mm^2)$	$l_e(mm)$	$A_e(mm^2)$	$V_e(mm^3)$	$A_{MIN}(mm^2)$	$AL(nH)$ @ 1 kHz <10gauss
0.82	91.1	111	10140	100	2600±25%
MATE PAIR CLAMPING FORCE = 10 LBS.					

POWER LOSS @ 100°C
 F = 100 kHz, 2000g. P.L. ≤ 6.2 WATTS

FAIR-RITE PRODUCTS CORP.					
TITLE EER CORE					
DRAWN BY J.SERENCIS	DATE 07-12-2018	SIZE	PART NO.	REV.	
CHKD BY		B	9578354202	~	
APPRVD BY		SCALE	NONE	SHEET 1 of 1	

FR# 78