

Han 3EMC-PFT-SL-M20

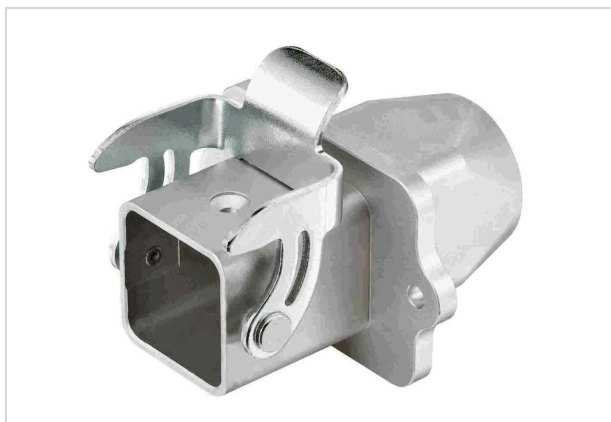


Image is for illustration purposes only. Please refer to product description.

Part number	19 62 003 1120
Specification	Han 3EMC-PFT-SL-M20
HARTING eCatalogue	https://b2b.harting.com/19620031120

Identification

Category	Hoods/Housings
Series of hoods/housings	Han [®] EMC
Type of hood/housing	Panel feed through housing

Version

Size	3 A
Version	Top entry
Cable entry	1x M20
Locking type	Single locking lever
Field of application	Hoods/Housings for higher EMC requirements
Pack contents	Please order seal screw separately.

Technical characteristics

Limiting temperature	-40 ... +125 °C
Note on the limiting temperature	For use as a connector according to IEC 61984.
Degree of protection acc. to IEC 60529	IP44
	IP65 With seal screw
	IP67 With seal screw
Type rating acc. to UL 50 / UL 50E	12

Material properties

Material (hood/housing)	Zinc die-cast
Surface (hood/housing)	Uncoated
Colour (hood/housing)	Unpainted



Pushing Performance
Since 1945

Material properties

Material (seal)	NBR
Material (locking)	Steel
Surface (locking)	Zinc plated
RoHS	compliant with exemption
RoHS exemptions	6(a) / 6(a)-I: Lead as an alloying element in steel for machining purposes and in galvanised steel containing up to 0,35 % lead by weight / Lead as an alloying element in steel for machining purposes containing up to 0,35 % lead by weight and in batch hot dip galvanised steel components containing up to 0,2 % lead by weight
ELV status	compliant with exemption
China RoHS	50
REACH Annex XVII substances	Not contained
REACH ANNEX XIV substances	Not contained
REACH SVHC substances	Yes
REACH SVHC substances	Lead
California Proposition 65 substances	Yes
California Proposition 65 substances	Lead Nickel Naphthalene

Specifications and approvals

Approvals	CE DNV GL
-----------	--------------

Commercial data

Packaging size	10
Net weight	83 g
Country of origin	Germany
European customs tariff number	85389099
GTIN	5713140132276
ETIM	EC000437
eCl@ss	27440202 Shell for industrial connectors