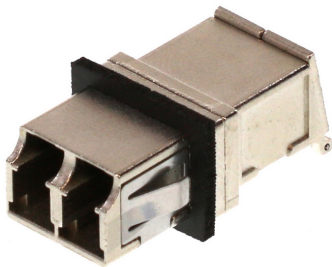




**Part Number :** [1061152117](#)  
**Product Description :** EMI LC Adapter, Duplex, Metal Body, Zirconia (Zr) Alignment Sleeve, Snap Mount Style, Shutter One Side, Conductive Fabric Gasket  
**Series Number :** 106115  
**Status :** Active  
**Product Category :** Fiber Optic Adapters




## Documents & Resources

**Drawings**  
[1061152117\\_sd.pdf](#)

**Specifications**  
[1063971902-000.pdf](#)

## Product Environment Compliance

### Compliance

GADSL/IMDS	Not Relevant
China RoHS	
EU ELV	Not Relevant
Low-Halogen Status	Not Low-Halogen per IEC 61249-2-21
REACH SVHC	Not Contained per D(2024)4144-DC (27 June 2024)
EU RoHS	Compliant per EU 2015/863

### Multiple Part Product Compliance Statements

- Eu RoHS
- REACH SVHC
- Low-Halogen

### Multiple Part Industry Compliance Documents

- IPC 1752A Class C
- IPC 1752A Class D
- Molex Product Compliance Declaration
- IEC-62474

## Part Details

### General

Status	Active
Category	Fiber Optic Adapters
Series	106115
Description	EMI LC Adapter, Duplex, Metal Body, Zirconia (Zr) Alignment Sleeve, Snap Mount Style, Shutter One Side, Conductive Fabric Gasket
Component Type	EMI Shielding
Product Family	Optical EMI Shielding Adapters
Product Name	LC
Type	Adapter
UPC	800756683799

### Electrical

Shield Type	EMI Gasket
Shielded	Yes

### Physical

Alignment Sleeve	Ceramic
Angled Physical Contact (APC)	N/A
Color - Resin	N/A
Gender	Female-Female
Material - Housing	Die-Cast
Mounting Style	Snap
Net Weight	12.900/g
Orientation	Straight
Panel Mount	With Flange
Ports	2
Shutter	One Side

### Solder Process Data

Lead-Free Process Capability	N/A
------------------------------	-----

---

Mates With / Use With

Mates with Part(s)

Description	Part Number
LC Connectors	<u>106024</u>
LC Duplex Connectors	<u>106025</u>
LC APC Connectors	<u>106090</u>