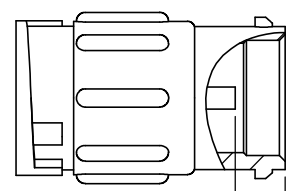


| ASS'Y P/N    | CABLE O.D.          |
|--------------|---------------------|
| 8280-XPG-513 | .13-.15 [3.3-3.8]   |
| 8280-XPG-516 | .16-.18 [4.1-4.6]   |
| 8280-XPG-519 | .19-.21 [4.8-5.3]   |
| 8280-XPG-522 | .22-.25 [5.6-6.4]   |
| 8280-XPG-526 | .25-.27 [6.3-6.8]   |
| 8280-XPG-528 | .265-.285 [6.6-7.1] |

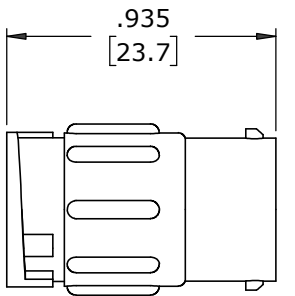
| ASSEMBLY P/N | CONTACT QTY |
|--------------|-------------|
| 8280-2PG-5XX | 2 #20       |
| 8280-3PG-5XX | 3 #20       |
| 8280-4PG-5XX | 4 #20       |
| 8280-5PG-5XX | 5 #20       |
| 8280-6PG-5XX | 6 #20       |
| 8280-7PG-5XX | 7 #20       |
| 8280-8PG-5XX | 8 #20       |
| 8280-XPG-5XX |             |

NOTES:  
 1. ALL PARTS TO BE BULK PACKED  
 2. CONTACTS SHIPPED UNASSEMBLED  
 3. ALL DIMENSIONS ARE REFERENCE EXCEPT THOSE WITH A TOLERANCE

**CUSTOMER APPROVAL**  
 THIS DOCUMENT CONTAINS CONFIDENTIAL INFORMATION PROPRIETARY TO CONXALL CORPORATION. ANY REPRODUCTION, DISCLOSURE, OR USE OF THIS DOCUMENT /INFORMATION IS EXPRESSLY PROHIBITED UNLESS AUTHORIZED IN WRITING BY CONXALL CORPORATION.  
 APPROVED BY: \_\_\_\_\_  
 DATE: \_\_\_\_\_

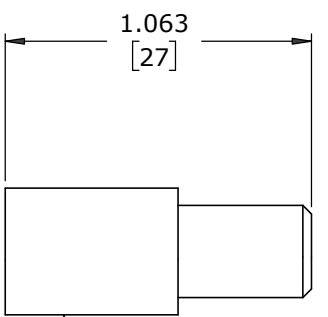


(2-8) #20 PIN CONTCT, CRIMP  
 MAT'L: GOLD PLATED COPPER ALLOY  
 .173±.015 CONTACT HEIGHT



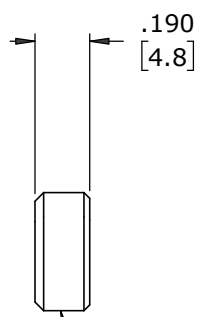
.935 [23.7]

IN-LINE CONNECTOR, MALE  
 MAT'L: NYLON, BLACK



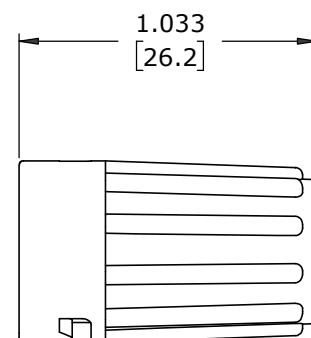
1.063 [27]

GROMMET  
 MAT'L: RUBBER, BLACK



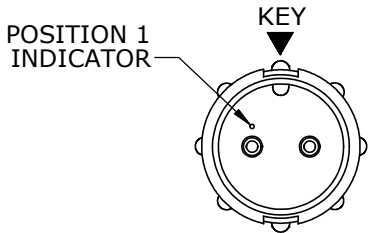
.190 [4.8]

CABLE GRIP  
 MAT'L: POLYPROPYLENE, BLACK

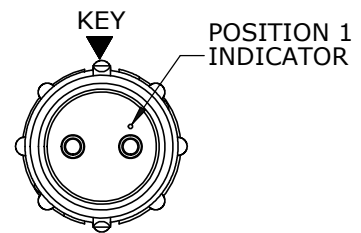


1.033 [26.2]

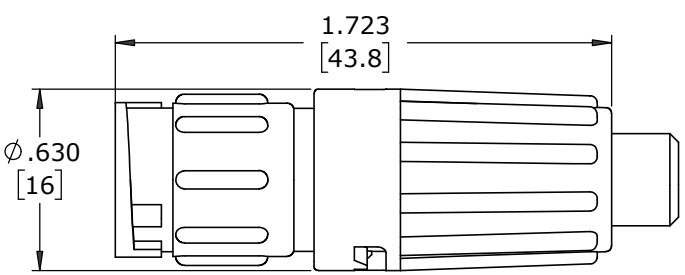
BACKSHELL  
 MAT'L: NYLON, BLACK



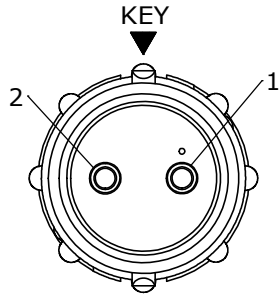
**FACE VIEW**  
 8280-2PG-5XX SHOWN



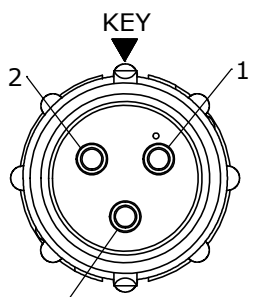
**WIRE VIEW**  
 8280-2PG-5XX SHOWN



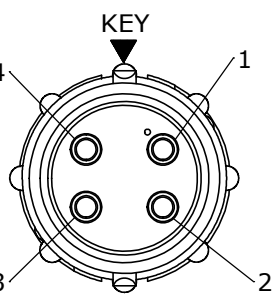
**SHOWN ASSEMBLED**  
 FOR CUSTOMER REFERENCE ONLY



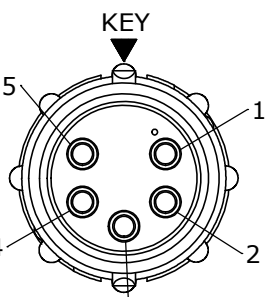
**WIRE VIEW**  
 8280-2PG-5XX



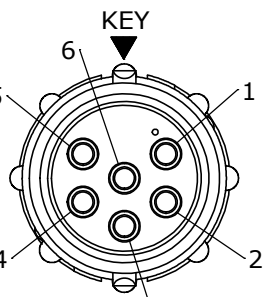
**WIRE VIEW**  
 8280-3PG-5XX



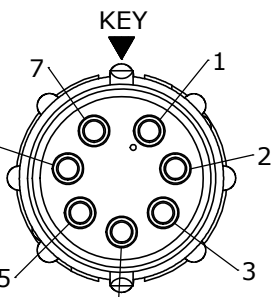
**WIRE VIEW**  
 8280-4PG-5XX



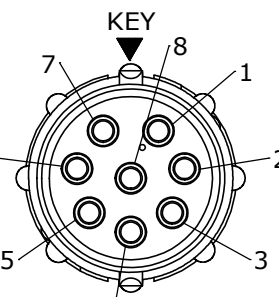
**WIRE VIEW**  
 8280-5PG-5XX



**WIRE VIEW**  
 8280-6PG-5XX



**WIRE VIEW**  
 8280-7PG-5XX



**WIRE VIEW**  
 8280-8PG-5XX

DIMENSIONS IN BRACKETS [ ] ARE IN MILLIMETERS UNLESS INDICATED

**RoHS COMPLIANT**

|  |       |          |   |                |
|--|-------|----------|---|----------------|
| A  | MA    | 02-04-21 | DRAWING CREATED PER DOR 21-S149SL-2                                     |                |
| REV.   | INIT. | DATE     | DESCRIPTION   |                |
|  |       |          | ORIG. DRAWN BY: MA  | DATE: 02-04-21 |
| ALL INFORMATION ILLUSTRATED IS THE PROPERTY OF "CONXALL CORPORATION". UNAUTHORIZED DUPLICATION OR DISTRIBUTION OF THIS DOCUMENT IS PROHIBITED. |       |          | <br>601 E. WILDWOOD VILLA PARK, IL 60181                                |                |
| ALL UNITS ARE IN FEET, INCHES, FRACTION OF INCHES AND DECIMALS.  |       |          |   |                |
| APPROVED BY:   |       |          | TITLE: IN-LINE CONNECTOR ASS'Y (2-8) #20 PIN CONTACTS, CRIMP MINI-CON-X |                |
| SCALE: NTS   |       |          | CUSTOMER: STANDARD PRODUCT  |                |
| FILE: 8280-XPG-5XX   |       |          | PART NUMBER: 8280-XPG-5XX   |                |
| DIRECTORY: SLW   |       |          | REV A   |                |

CUSTOMER PRINT

PART NUMBER: 8280-XPG-5XX

# Mouser Electronics

Authorized Distributor

Click to View Pricing, Inventory, Delivery & Lifecycle Information:

## Switchcraft:

[8280-2PG-513](#) [8280-2PG-516](#) [8280-2PG-519](#) [8280-2PG-522](#) [8280-2PG-5XX](#) [8280-3PG-513](#) [8280-3PG-516](#)  
[8280-3PG-519](#) [8280-3PG-522](#) [8280-3PG-5XX](#) [8280-4PG-513](#) [8280-4PG-516](#) [8280-4PG-519](#) [8280-4PG-522](#) [8280-](#)  
[4PG-5XX](#) [8280-5PG-513](#) [8280-5PG-516](#) [8280-5PG-519](#) [8280-5PG-522](#) [8280-5PG-5XX](#) [8280-6PG-513](#) [8280-6PG-](#)  
[516](#) [8280-6PG-519](#) [8280-6PG-522](#) [8280-6PG-5XX](#) [8280-7PG-513](#) [8280-7PG-516](#) [8280-7PG-519](#) [8280-7PG-522](#)  
[8280-7PG-5XX](#) [8280-8PG-513](#) [8280-8PG-516](#) [8280-8PG-519](#) [8280-8PG-522](#) [8280-8PG-5XX](#)