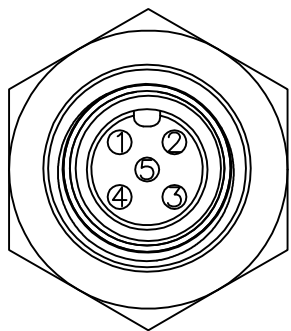
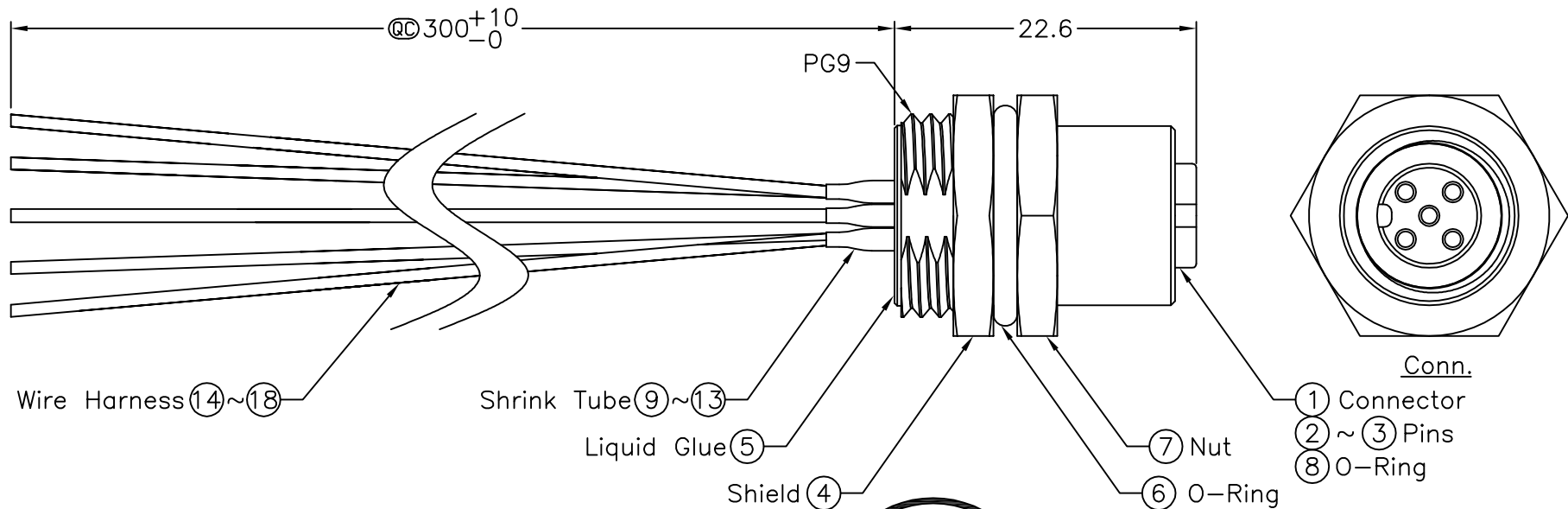
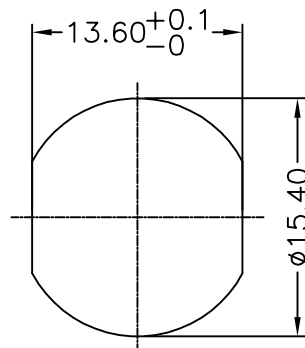


A circular stamp with a thick black border. The text inside is arranged in four horizontal sections. The top section contains 'ALTW' in a large, bold, serif font. The second section contains 'DCC. DEPT.' in a smaller, bold, serif font. The third section contains 'CONFIDENTIAL' in a bold, serif font. The fourth section contains '2007.10.12' in a bold, serif font. The bottom section contains 'ISSUED' in a large, bold, serif font.



Pin Assignments


Front View



Recommended Panel Cut-Out

5	Blue (22AWG)
4	White (22AWG)
3	Black (18AWG)
2	Red (18AWG)
1	Green (22AWG)
Conn.	Wire Color
Pin Out	

- * @C Important Dimension.
- * Waterproof Rate: IP68
- * Connector: Black, Nylon+GF
- * Female Pin: Copper Alloy, Gold Plated
- * Shield: Zinc Alloy, Nickel Plated
- * Nut: Zinc Alloy, Nickel Plated
- * O-Ring: Black, EPDM
- * O-Ring: Green, Viton
- * For Panel Thickness Max 4.5mm
- * Wire Harness: UL1007 (5PCS)
- * Nut Torque: 4-6 kgf.cm

UNIT:mm	
TOLERANCE	
.X	±0.25
.XX	±0.1
.XXX	±0.05
ANGLES	±1°

TITLE			
M12 Conn NMEA Panel Screw 5Pin F Conn F Pin			
SCALE		Free	SHEET 1 OF 1
REV.	B	SIZE A4	QC : Inspection Item

Amphenol LTW
安費諾亮泰企業股份有限公司

ITEM NO	MC-05PFFS-SH8001
DWG NO	MC-05PFFS-SH8001
CUSTOMER	

DRAWN BY	Myrdal Manzano
CHECKED BY	Alan MJ Sundo
APPROVED BY	Cloud

DATE	2007/09/29
DATE	2007/10/02
DATE	2007/10/04