

1594163
<https://www.phoenixcontact.com/us/products/1594163>

Please be informed that the data shown in this PDF document is generated from our online catalog. Please find the complete data in the user documentation. Our general terms of use for downloads are valid.



M23, Device connector rear mounting, series: RC, straight, shielded: yes, Screw locking mechanism, No. of pos.: 6, Direction of rotation: Standard, contact connection type: Socket, Solder-in connection, Axial O-ring, Central fastening M25 x 1.5, Panel thickness min.: 0.8 mm, Panel thickness max.: 6.5 mm, coding: N, Alternative product in accordance with RoHS II without Exemption 6c (Pb < 0.1 %) item no.: 1240461

Commercial data

Item number	1594163
Packing unit	12 pc
Minimum order quantity	10 pc
Note	Made to order (non-returnable)
Sales key	AB31
Product key	ABRAFR
GTIN	4046356200011
Weight per piece (including packing)	67.38 g
Weight per piece (excluding packing)	67.38 g
Customs tariff number	85366990
Country of origin	DE

Technical data

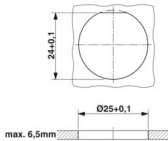
Product properties

Product type	Circular connectors (device side)
Thread type	M23

Data management status

Article revision	04
------------------	----

Dimensions

Dimensional drawing	
Length of the solder pin	11 mm
	11 mm

Material specifications

Flammability rating according to UL 94	V0
--	----

Connection data

Conductor connection

Connection method	Solder connection
-------------------	-------------------

Connector

Insulating body

Coding	N
Insertion/withdrawal cycles	50
Connection method	Solder-in connection
Contact switching type	Socket
Application	Signal
Number of positions	6
Direction of rotation	Standard
Connection profile	6
Contact diameter Power contacts	2 mm
Rated current Power contacts	20 A
Rated voltage	300 V
Rated surge voltage	2.5 kV
Overvoltage category	II
Degree of pollution	3
Overvoltage category	II

RC-06S1NC2H000 - Device connector rear mounting



1594163

<https://www.phoenixcontact.com/us/products/1594163>

Degree of pollution	3
---------------------	---

Housing

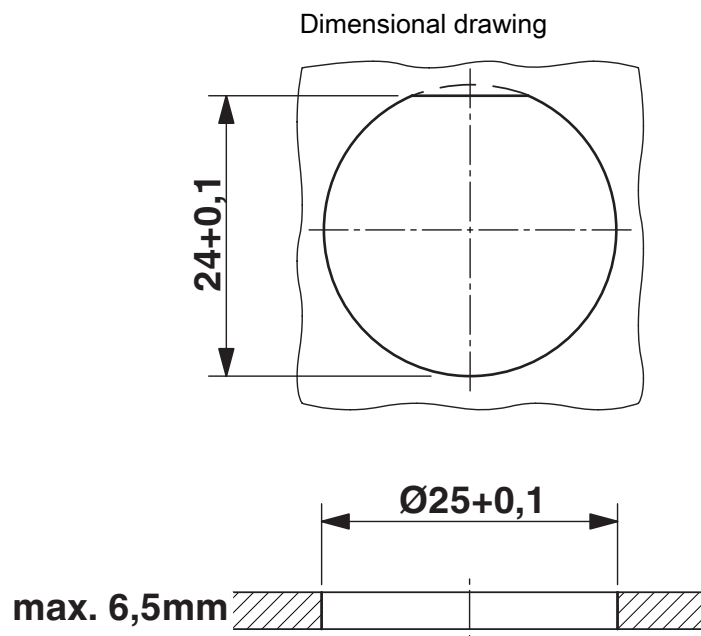
Housing material	Metal
Type of locking	Screw locking mechanism
Pg screw connection	none
Degree of protection (plugged in)	IP67
Thread type	M23

Environmental and real-life conditions

Ambient conditions

Degree of protection	IP67
----------------------	------

Drawings

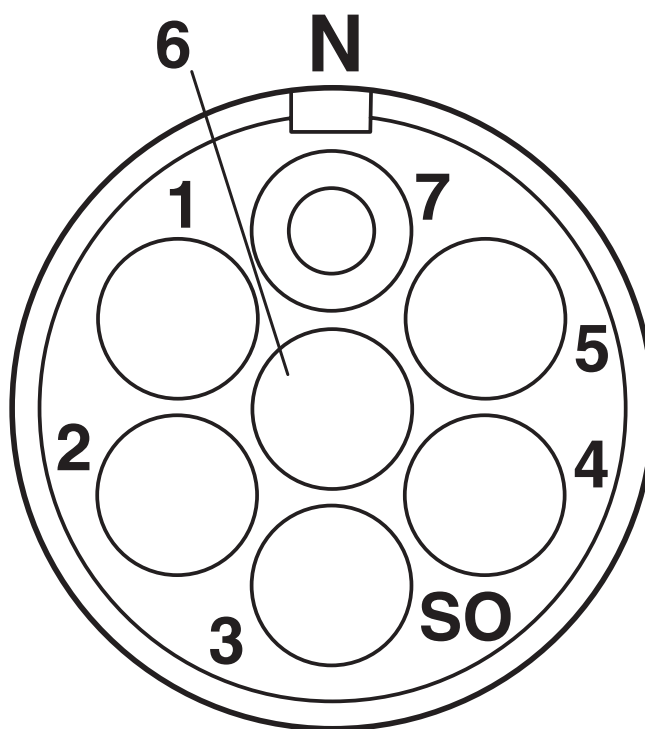


Installation dimensions

1594163

<https://www.phoenixcontact.com/us/products/1594163>

Schematic diagram



Connector pin assignment

RC-06S1NC2H000 - Device connector rear mounting



1594163

<https://www.phoenixcontact.com/us/products/1594163>

Classifications

ECLASS

ECLASS-11.0	27440109
ECLASS-12.0	27440109
ECLASS-13.0	27440109

ETIM

ETIM 9.0	EC003569
----------	----------

UNSPSC

UNSPSC 21.0	39121400
-------------	----------

Environmental product compliance

EU RoHS	
Fulfills EU RoHS substance requirements	Yes
Exemption	6(c)
China RoHS	
Environment friendly use period (EFUP)	EFUP-50
	An article-related China RoHS declaration table can be found in the download area for the respective article under "Manufacturer declaration". For all articles with EFUP-E, no China RoHS declaration table issued and required.
EU REACH SVHC	
REACH candidate substance (CAS No.)	Lead(CAS: 7439-92-1)
SCIP	32e7143b-a50f-400d-b44f-4e016be071f6